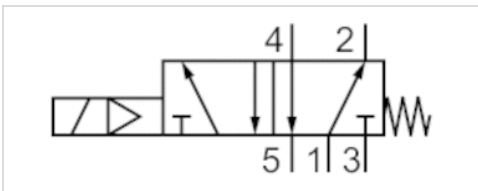


5/2-directional valve, Series 581, size 2

- ISO 5599-1
- ISO 2
- 5/2
- Basic valve for CNOMO pilot valve
- With spring return
- single solenoid
- $Q_n = 2700 \text{ l/min}$
- Compressed air connection output Base plate ISO 5599-1



Type	Spool valve
basic valve with electrical connector	Basic valve without pilot valve
Pilot	External Internal
Sealing principle	Soft sealing
Blocking principle	Single base plate principle
Connection type	Plate connection
Standards	ISO 5599-1, ISO 2
Working pressure min./max.	-0,95 ... 10 bar
Control pressure min./max.	3 ... 10 bar
Ambient temperature min./max.	-15 ... 50 °C
Medium temperature min./max.	-15 ... 50 °C
Medium	Compressed air
Max. particle size	50 µm
Oil content of compressed air	0 ... 5 mg/m ³
Nominal flow Q_n	2700 l/min
Flow conductance C	10,8 l/(s*bar)
Protection class with connection	IP65
Duty cycle	100 %
Mounting screw	with hexagon socket
Mounting screw tightening torque	3,5 Nm
Weight	0,42 kg

Technical data

Part No.

5812180080

Nominal flow Q_n at 6 bar and $\Delta p = 1 \text{ bar}$, The pilot can be set by turning the seal under the valve cover by 180°. For internal pilot the working pressure min/max is the same as the control pressure min/max.

Technical information

The min. control pressure must be adhered to, since otherwise faulty switching and valve failure may result!
 The pressure dew point must be at least 15 °C under ambient and medium temperature and may not exceed 3 °C .
 The oil content of compressed air must remain constant during the life cycle.
 Use only the approved oils from AVENTICS. Further information can be found in the "Technical information" document (available in the MediaCentre).

Technical information

Housing	Polyarylamide
Seals	Acrylonitrile butadiene rubber

Dimensions

