

FEATURES

- Power Pulse Tank System using aluminium profile and end covers with CE approval according to Directive 97/23/EC for Pressure Equipment
- Full immersed valve system with special springless piston/diaphragm design offers highest peak pressure and best flow performance operating features required for dust collector applications
- The high quality TPE piston/diaphragm guarantees a long operating life and a large temperature range
- Possibility to apply different combinations of pitch distances and upto 24 valves
- Easy to connect to other tank systems. Service connections for different accessories such as: filter regulator, pressure gauge, safety valve and automatic / manual drain valve
- Several blow pipe connections available, such as: Quick Mount, push-in, hose or threaded

GENERAL

Differential pressure (PS) 0,3 to 8,5 bar [1 bar = 100 kPa]
Ambient temperature range -20°C to +85°C

Tank System

volume 0,20 dm³ per cm tank
recommended min. tank volume 10 dm³ (equals 500 mm tank length)
min. pitch distance 120 mm
maximum length 3000 mm
min. pulse time 50 ms

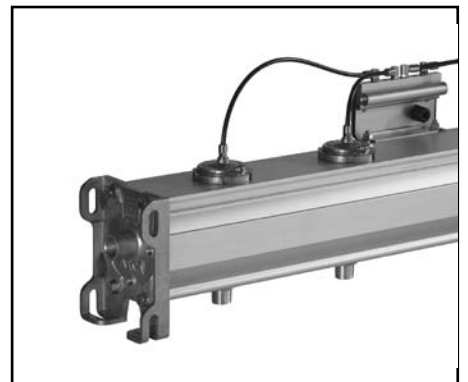
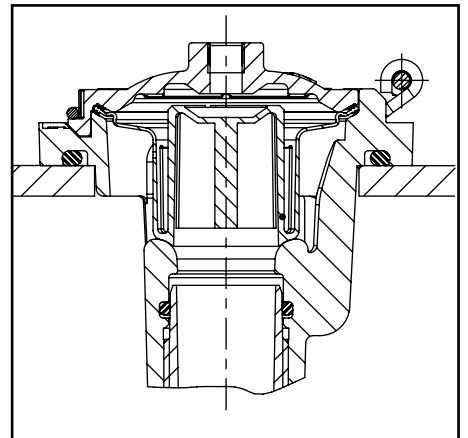
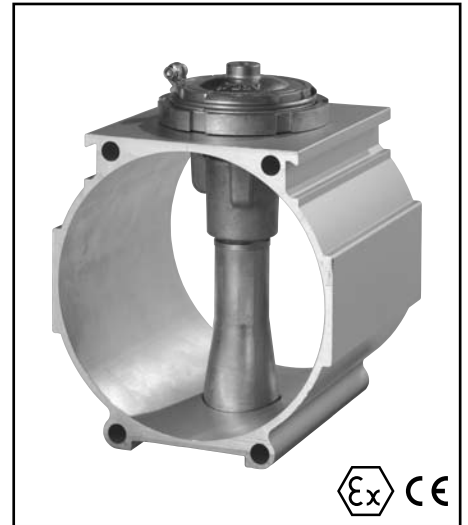
fluid	temperature range (TS)	piston/diaphragm
air	-20 to +100 °C	TPE (thermoplastic polyester elastomer)

CONSTRUCTION

Tank Anodized aluminium
Adapter/body Aluminium
Clipping Stainless steel
Clamps Stainless steel
Bolts (clamps) Stainless steel
Sealings & disc NBR (nitrile)
Piston/diaphragm TPE (thermoplastic polyester elastomer)

RECOMMENDED PILOT VALVES AND BOXES (2/2 NC function)

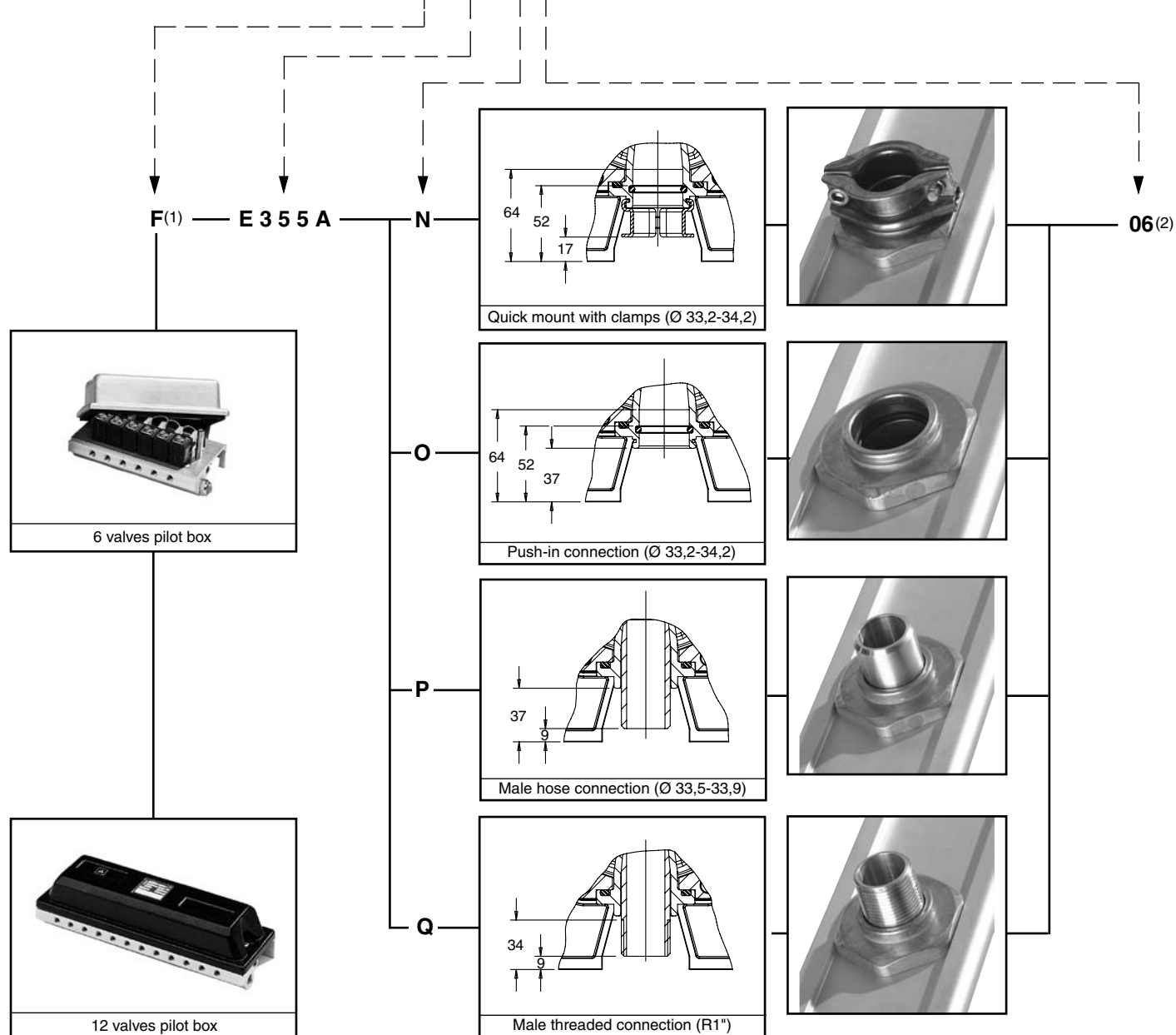
main pulse valve catalogue number	remote pilot valve connection	orifice size (mm)	pilot valve box (IP65)	single pilot valve (IP20)
E355AN .. E355AO .. E355AP .. E355AQ ..	G1/8	3,6	pilot box series 110 2 to 12 pilots 1/8	US E257A001 US E257A002 US E257A003



SPECIFICATIONS

pipe size	remote pilot connection	orifice size	flow coefficient Kv		operating pressure differential (bar)		catalogue number
					min.	maximum (PS) air	
1"	G	(mm)	(m³/h)	(l/min)	0,30	8,5	. E355A ...

ORDERING INFORMATION - for example: **F E355A N 06** + Dimension code (specified on next page)



(1) for a selection of pilot boxes see pages X003-29 to X003-38
(2) specify required number of valves between 01 and 24

ORDERING INFORMATION DIMENSION CODE

Start distance	A	(min. 110 mm)
Standard pitch	B/C/D	(min. 120 mm)
Deviating pitch	B/C/D	(min. 120 mm)
End distance	A	(min. 110 mm)

Example I: Dimension code for a 4 valves tank system:

Operator	Remote, pilotbox controlled 24V/DC without heating
Connection	Quick Mount
Number of valves	4 pcs
Start and End distance	110 mm
Standard pitch	170 mm
Deviating pitch	None
Catalogue number	F E355AN04
Dimension code	110170
Pilotbox	S G110A040 24V/DC
Complete order number	F E355AN04 + 110170

Example II: Dimension code for a 12 valves tank system:

Operator	Remote, controlled with external pilotbox
Connection	Thread
Number of valves	12 pcs
Start and End distance	130 mm
Standard pitch	140 mm
Deviating pitch	Between valve 3 and 4 is position D; 180 mm and between valve 7 and 8 is position H; 200 mm
Catalogue number	E355AQ12
Dimension code	130140D180H200
Complete order number	E355AQ12 + 130140D180H200

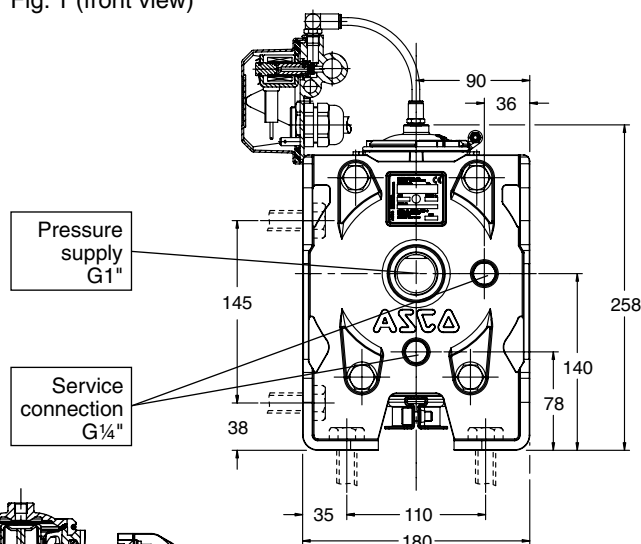
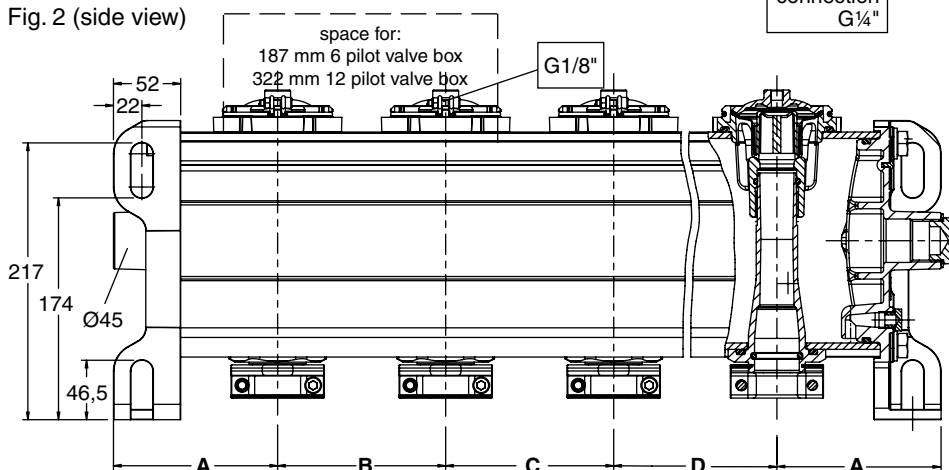
For assistance please consult our website: www.asconumatics.eu

DIMENSIONS (mm)



Fig. 1 (front view)

Fig. 2 (side view)



OPTIONS


- Special customized executions
- Pilot boxes containing 2 to 12 pilot valves
- Separate pilot valves can be equipped with explosionproof solenoids for hazardous locations according to "ATEX" (CENELEC) and national standards
- Separate Quick Mount clamps for outlet connection; kit number: **C132-679**

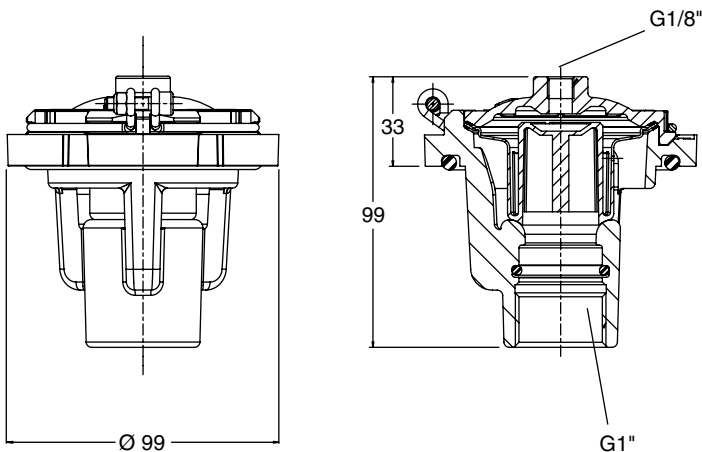
INSTALLATION

- Tank system can be mounted in any position using the standard brackets integrated in the end cap (M12 bolts recommended) without affecting operation
- Pipe connection identifier is: R = according to ISO 7/1, G = according to ISO 228/1 or Ø for other outlet connections
- For Quick Mount types tightness is achieved by the O-ring sealing on the pipe (1" = Ø33,2 to 34,2) according to ISO 4200
- When connecting piping or tubing to the G1/8 connection in the valve bonnet, the remote ASCO pilot valve should be mounted as close as possible to the main pulse valve. Connection tubing lengths of 3 meter or less have little effect on the pulse response. Installations with over 3 meter of tubing must be tested under actual operating conditions. Tubing with Ø 6 mm is recommended for all installations
- Installation/maintenance instructions are included with each tank system
- Spare valves, spare parts kits and coils are available

SEPARATE / SPARE POWER PULSE VALVES

FEATURES - (same as for the tank system)

DIMENSIONS (mm), **WEIGHT** (kg) 



SPECIFICATIONS

pipe size	catalogue number	weight
(G) Female threaded connection (ISO 228/1)		
1	E353A231	0,428