

FEATURES

- Tank system using aluminium profile and end covers with CE approval according to Pressure Equipment Directive 2014/68/EU, modules B1+D
- For use in dust collector applications requiring high flow capacity and accurate process control
- Full immersed valve system with thermoplastic polyester elastomer (TPE) piston/diaphragm design offers highest peak pressure and best flow performance
- The high quality piston/diaphragm guarantees a long operating life and a large temperature range
- Possibility to apply different combinations of pitch distances and up to 24 valves
- Easy to connect to other tank systems. Service connections for different accessories such as: filter regulator, pressure gauge, safety valve and automatic/manual drain valve
- Several blow pipe connections available, such as: push-in, hose or male or female threaded
- Tanks are available in a direct control valve version with a selection of coil systems and voltages or as a remote control, single piston/diaphragm version for external pilot valves or pilot boxes
- The integral operators are provided with epoxy moulded F-class coils. Various optional waterproof and explosionproof solenoids for use in potentially explosive atmospheres according to Directive ATEX 2014/34/EU, Zones 21+22 can be mounted



GENERAL

Pressure inlet connection	ISO 228/1, G 1" female
Air operating pressure	min. 0,3, max. 8,5 bar
Safety pressure	12,2 bar
Flow rate	Kv 23,3 = 384 l/min
Ambient temperature range	-20°C to +85°C

Tank System

volume	0,200 dm ³ / cm
recommended min. tank volume	15 dm ³
min. pitch distance	end cap 110 mm; between valve 120 mm
maximum length	3000 mm

The tank system can be mounted in any position without affecting operation

fluids (*)	temperature range (TS)	seal materials (*)
air	-20 to +100 °C	TPE (thermoplastic polyester elastomer)

CONSTRUCTION

Tank	Anodised aluminium profile EN AW-6060 T66
Valve, outlet adapter	Die-cast aluminium GD-ALSi12 to EN 1706
End caps	Die-cast aluminium GD-ALSi12 to EN 1706
Spring	Stainless steel
Plugs	PA (polyamide)
Sealings & disc	NBR (nitrile)
Screws	Steel 8.8
Diaphragm	TPE
Shading coil	Copper

ELECTRICAL CHARACTERISTICS

Coil insulation class	F
Connector	Spade plug (cable Ø 6-10 mm)
Connector specification	3 x DIN 46244
Electrical safety	IEC 335
Standard voltages	DC (=) : 24V
(Other voltages and 60 Hz on request)	AC (~) : 24V - 120V - 230V / 50 Hz

coil type	nominal power ratings				operator temperature range (TS) (°C)	protection	replacement coil	
	inrush	holding		hot/cold			~	=
	~	~	~	=			~	=
	(VA)	(VA)	(W)	(W)			230 V/50 Hz	24 V DC
XM5-FB	14,5	11	6,3	-	-20 to +85	moulded IP65	400127-217	-
XM5-FI (1)	-	-	-	15 / 22			-	400127-642

(1) Intermittent duty, Relative Duty Time is 10%. Max. on time 1 min.

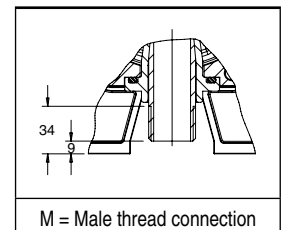
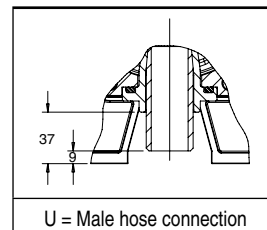
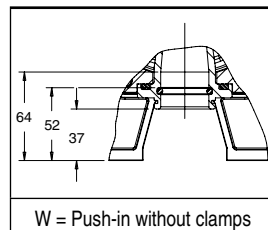
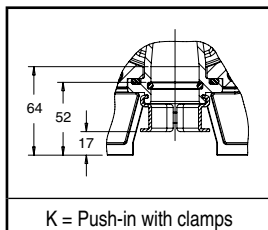
ALUMINIUM TANK SYSTEM

HOW TO ORDER

15-DIGIT PRODUCT CODE

Thread connection G = ISO 228/1	G	355	B	6	M	B	S	0000	F1	Voltage - class F1 = 24 DC - Class F FL = 24/50 - Class F FH = 230/50-60 - Class F F2 = 120/60 - Class F 00 = All remote valves no voltage required
Product series 355										Dimensions code Consult our Dynamic Product Modeling Tool on: www.asconumatics.eu Dimension code for distance between valves and end caps is determined by ASCO
Revision letter B										
Diameter code / diaphragm material 6 = 6" / Thermoplastic polyester elastomer (TPE)										
Outlet connection type K = Push-in with clamps W = Push-in without clamps U = Male hose connection M = Male thread connection										Actuation 1 = Remote single stage prepared for pilot box, incl. brackets; push in fittings; plastic tube 3 = Remote control single stage 5 = Remote single stage prepared for pilot box ATEX II G/D, incl. brackets; push in fittings; plastic tube 7 = Remote single stage ATEX II G/D S = Solenoid operators SC IP65 ISO 4400 D = Solenoid operators SG ATEX 3D N = Solenoid operators NF ATEX 2G/D E = Solenoid operators EM ATEX 2G/D P = Solenoid operators PV ATEX 2G/D F = Solenoid operators EF NEMA 7+9 ICS-6 ANSI For more technical information see catalogue page "OPERATORS"
Number of valve stations 1 = 1 ... A = 10 B = 11 C = 12 D = 13 E = 14 F = 15 G = 16 H = 17 J = 18 . . . Q = 24										

OUTLET CONNECTION TYPES



ORDERING INFORMATION

DIMENSIONS (mm), WEIGHT (kg), VOLUME (l) 

Solenoid operated valve system

including spade plug connector ISO 4400, IP65, IEC 335

Fig. 1 (front view)

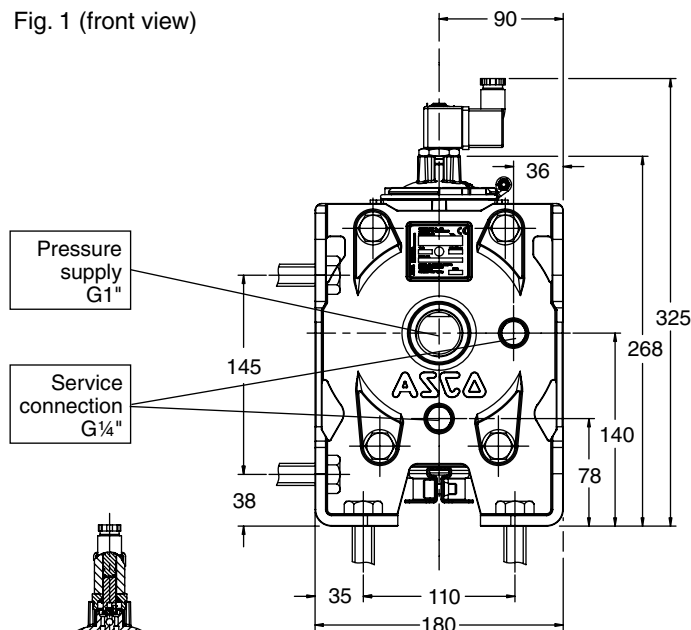
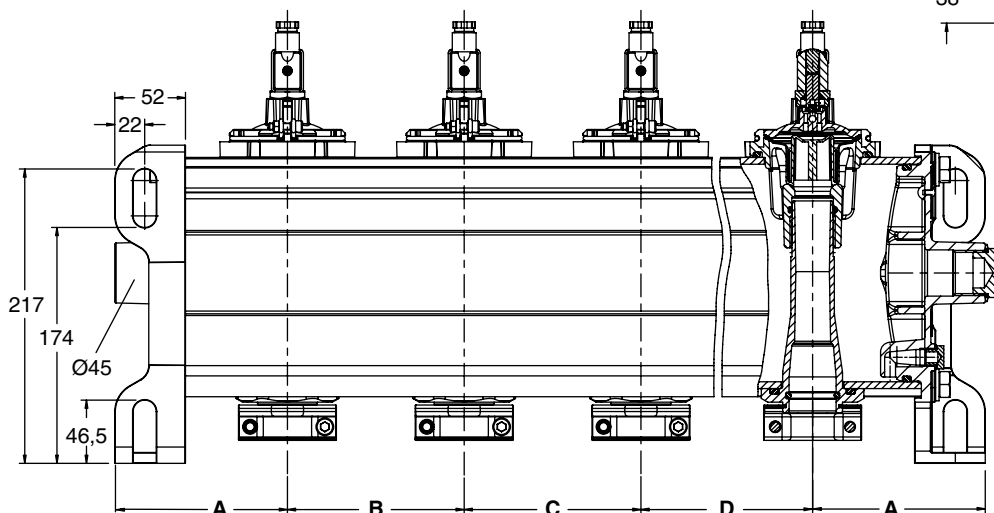


Fig. 2 (side view)



Example I: Dimension code for a 24 DC tank system with push-in outlet and 4 solenoid operated valves with built-in silencers:

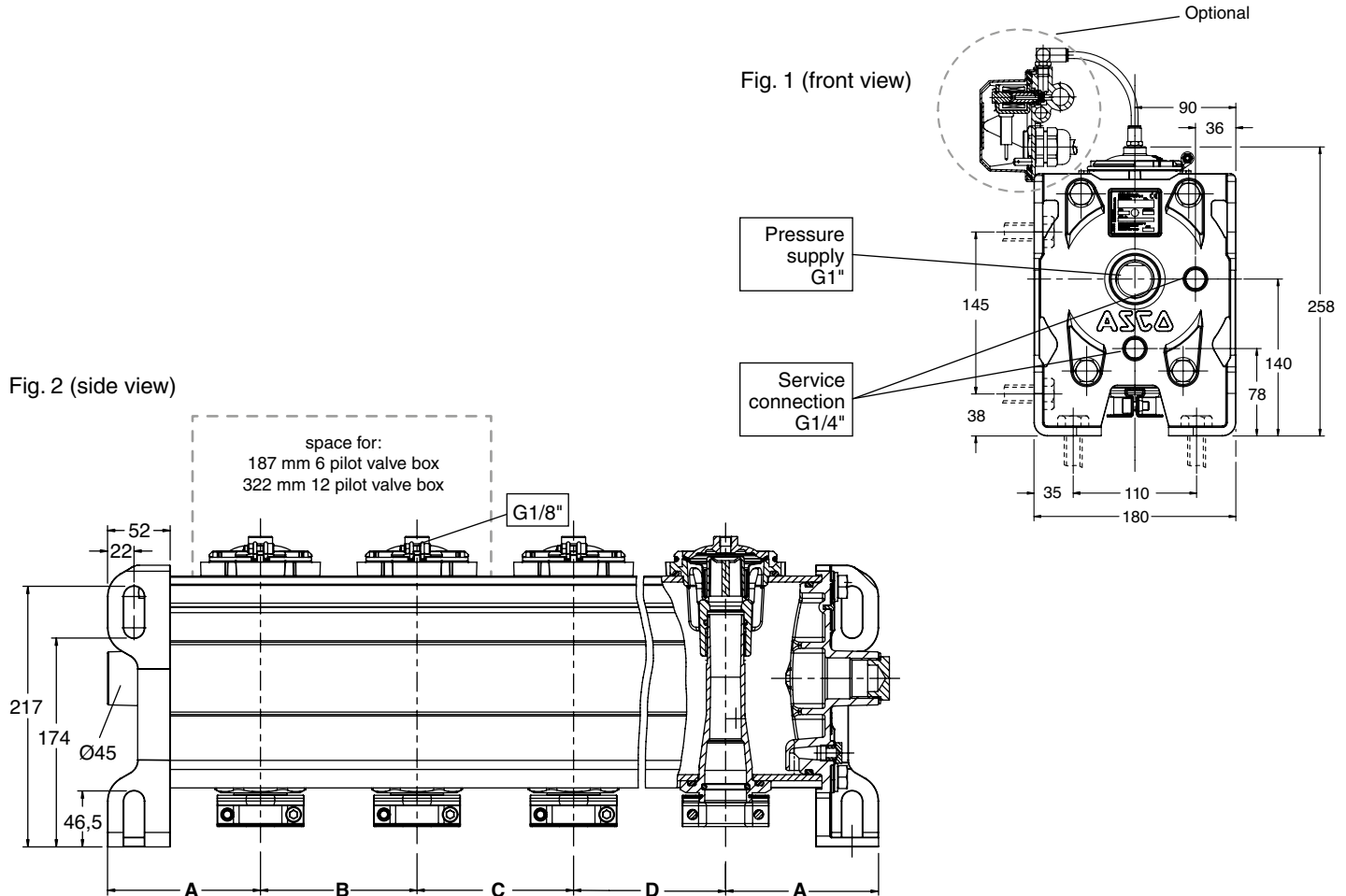
Start distance	A = min. 110 mm
Standard pitch	# valve = min. 120 mm
End distance	A = min. 110 mm
Total dimension	580 mm
Weight	13 kg
Volume	9 l
Order number	G355B6W4S0017F1

For assistance please consult our website: www.asconumatics.eu

ORDERING INFORMATION

DIMENSIONS (mm), WEIGHT (kg), VOLUME (l) 

Remote operated valve system prepared for pilot box
including pilot box mounting brackets, push-in fittings and tubes for G 1/8" pilot box series 110



Example II: Dimension code for a 4 remote operated valve tank system prepared for pilot box with clamp outlet:

Start distance	A =	min. 110 mm
Standard pitch	# valve =	min. 120 mm
End distance	A =	min. 110 mm
Total dimension		580 mm
Weight		14 kg
Volume		9 l
Order number		G355B6K41001800

For technical information on ASCO pilot boxes see catalogue series 110
For assistance please consult our website: www.asconumatics.eu

OPTIONS


- Special customised executions
- Pilot boxes containing 2 to 12 pilot valves
- Separate pilot valves can be equipped with explosionproof solenoids for hazardous locations according to "ATEX" (CENELEC) and national standards
- Separate Quick Mount clamps for outlet connection; kit number: **C132-679**

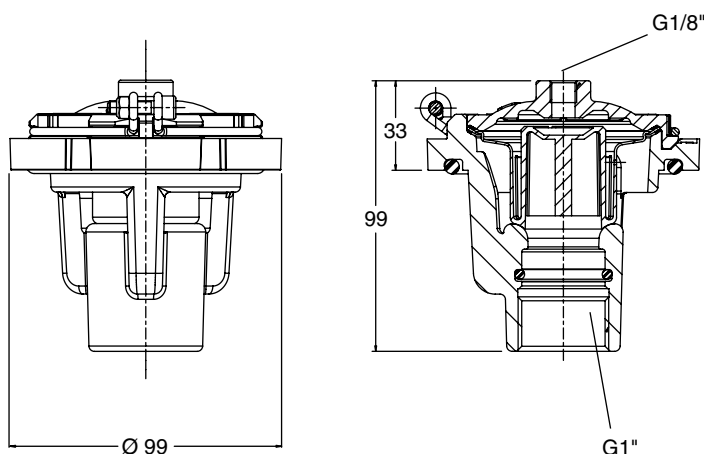
INSTALLATION

- The tank system can be mounted in any position without affecting operation using the brackets
- Pipe connection identifier is: G = according to ISO 228/1 or Ø for other outlet connections
- For Quick Mount types tightness is achieved by the O-ring sealing on the pipe (1" = Ø33,2 to 34,2) according to ISO 4200
- When connecting piping or tubing to the G1/8 connection in the valve bonnet, the remote ASCO pilot valve should be mounted as close as possible to the main pulse valve. Connection tubing lengths of 3 meter or less have little effect on the pulse response. Installations with over 3 meter of tubing must be tested under actual operating conditions. Tubing with Ø 6 mm is recommended for all installations
- Installation/maintenance instructions are included with each tank system
- Spare valves and spare parts kits are available

SEPARATE / SPARE POWER PULSE VALVES

FEATURES - (same as for the tank system)

DIMENSIONS (mm), **WEIGHT** (kg) 



SPECIFICATIONS

pipe size	catalogue number	weight
(G) Female threaded connection (ISO 228/1)		
1"	E353A231	0,428

SPARE PARTS KITS

designation	spare parts kit no.
Remote operated valve	C139420

OPTIONS


- Special customised executions
- Waterproof enclosures with embedded screw terminal coil according to protection class IP67, CEE 10
- Explosionproof solenoids for hazardous locations according to "ATEX" and national standards
- Separate Quick Mount clamps for outlet connection; kit number: **C132-679**

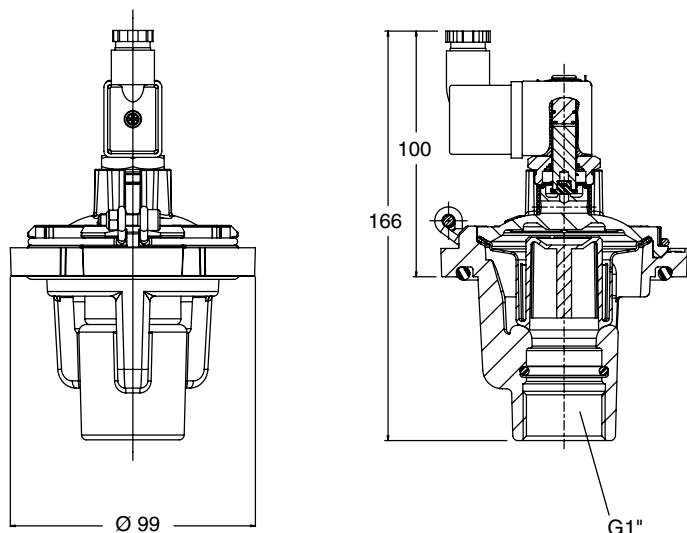
INSTALLATION

- The tank system can be mounted in any position without affecting operation using the brackets
- Pipe connection identifier is: G = according to ISO 228/1 or Ø for other outlet connections
- For Quick Mount types tightness is achieved by the O-ring sealing on the pipe (1" = Ø33,2 to 34,2) according to ISO 4200
- Installation/maintenance instructions and declaration of conformity are included with each tank system
- Spare valves, spare parts kits and coils are available

SEPARATE / SPARE POWER PULSE VALVES

FEATURES - (same as for the tank system)

DIMENSIONS (mm), **WEIGHT** (kg) 



SPECIFICATIONS

pipe size	catalogue number	weight
(G) Female threaded connection (ISO 228/1)		
1"	SC E353A237	0,558

SPARE PARTS KITS

designation	spare parts kit no.
Solenoid operated valve (~/=)	C139417