

FEATURES

- Valves for invitro diagnostics in biochemistry, hematology and immunology
- Can be used to control acids and bases, as well as analytical reagents
- The valves have easy-to-flush internal cavities and are ideal for controlling aggressive fluids or when high purity is demanded
- Very low internal volume
- Hermetic separation of control mechanism and fluid
- Reduced heat exchange between coil and fluid
- The use of first class materials and thorough valve testing ensure high reliability and a lifetime of at least 1 million cycles
- Suitable for vacuum applications

GENERAL

Differential pressure See «SPECIFICATIONS» [1 bar =100 kPa]
0,7 bar abs. (vacuum on polyamide body only)

Maximum viscosity 37 cSt (mm²/s)

Response time 20 ms

Internal volume < 67 µl

fluids (*)	temperature range (TS)	seal materials (*)
liquids or gases	-10°C to +100°C (3)	FFPM (perfluoroelastomer)
		EPDM (ethylene-propylene)

CONSTRUCTION

Body **PEEK body** **PA body**
PEEK PA (polyamide 12)

MATERIALS IN CONTACT WITH FLUID

(*) Ensure that the compatibility of the fluids in contact with the materials is verified

Mounting pad PEEK PA
Diaphragm and discs FFPM EPDM
Mounting pad seal FFPM EPDM

ELECTRICAL CHARACTERISTICS

Coil insulation class F

Coil Detachable and rotatable
Two spade terminals 2.8 x 0.5 mm (DIN 46340)
(or detachable size 15 connector)

Electrical enclosure protection IP40 (EN60529)

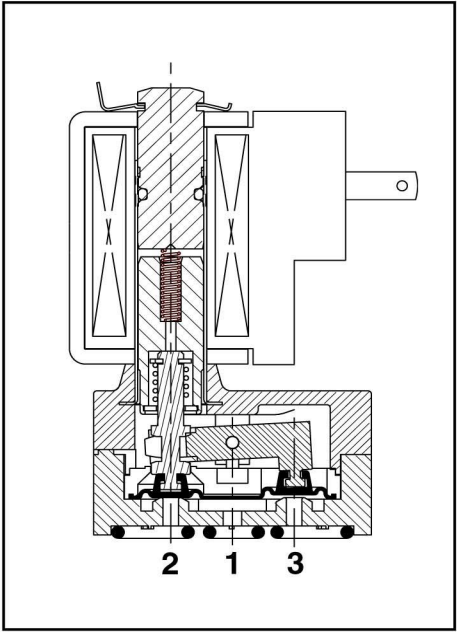
Standard voltages DC (=) : 12V - 24V
(Other voltages on request)

prefix option	power ratings				operator ambient temperature range (TS) (C°)	replacement coil		type (1) (DNX-4)
	inrush ~ (VA)	holding ~ (VA)	hot/cold = (W)	= (W)		=	=	
	(VA)	(VA)	(W)	(W)		12 V DC	24 V DC	
SC	-	-	-	- / 4	-10 to + 60	43005268	43005269	01

(1) Refer to the dimensional drawings on the following page.

SPECIFICATIONS

pipe size	orifice size	flow coefficient Kv		operating pressure differential (bar)				power coil (W)		catalogue number	options			
				min.	max. (PS)		FPM				EPDM			
					gases (*)	liquids (*)								
	(mm)	(m³/h)	(l/min)					~	=	=				
U - Universal, PEEK body, FFPM seals														
pad mount	1,5	0,03	0,5	0	2,4	2,4	-	4		SCS385A001	V	E	-	-
U - Universal, PA body, EPDM seals														
pad mount	1,5	0,03	0,5	0	2	2	-	4		SCS385A002E	-	-	-	-

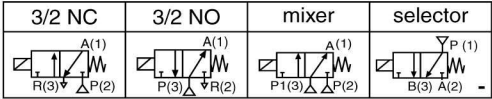


OPTIONS

- Valves can also be supplied with FPM (fluoroelastomer) and EPDM (ethylene-propylene) seals and diaphragm. Use the appropriate optional suffix letter for identification
- 2/2 NC function, catalogue number **SCS285A002**
- Leaded coil
- Power-save version (low holding power)
- Other types of connections are available (hose couplings etc.)
- Connector size 15, catalogue number **88143581**

INSTALLATION

- The solenoid valves can be mounted in any position without affecting operation
- Can be used for the following functions, depending on how the ports are connected:



- Installation/maintenance instructions are included with each valve

ORDERING EXAMPLES:

SC	S	385	A	001	12V / DC
SC	S	385	A	001	E 24V / DC
SC	S	385	A	002	E 24V / DC

prefix

pipe thread

basic number

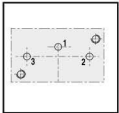
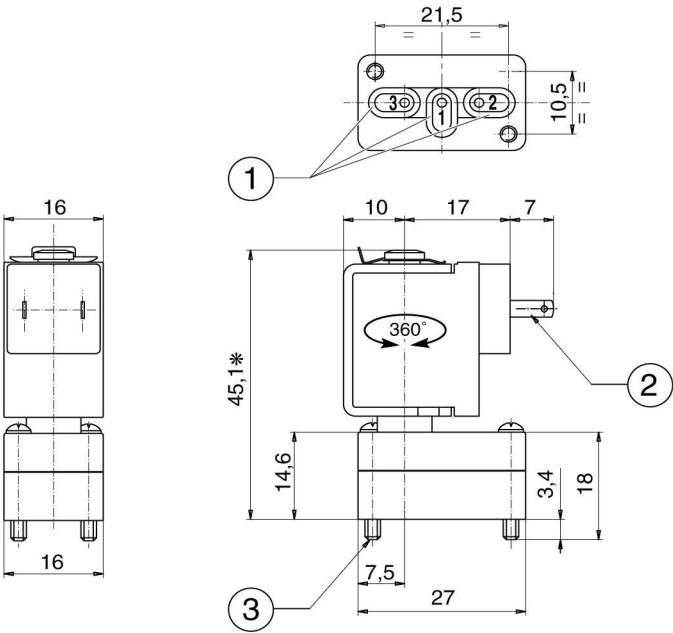
voltage

suffix

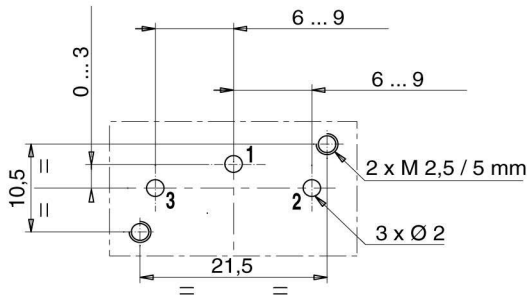
DIMENSIONS (mm), WEIGHT (kg)

TYPE 01
Prefix "SC" Solenoid
DIN 43340

SCS385A001 / A002E



MOUNTING PAD



type	prefix option	weight ⁽¹⁾
01	SC	0,04

⁽¹⁾ Including coil, without connector.

- 1 mounting pad seal.
- 2 Coil with 2 Faston-type terminals 2,8 x 0,5 (DIN 46340).
- 3 Mounting : 2 screws M2,5 x 18.