

## MODEL NUMBER

11-12118-A2

## PRODUCT LINE

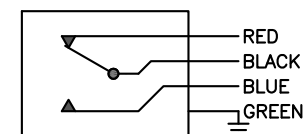
GO™ Switch 10/20 Series

## SPECIFICATIONS

Model	11 Model
Contact Form	SPDT (Form C)
Sensing Range	Extended approx. 9/16" side
Outlet Position	Behind sensing area
Enclosure Material	Brass w/flat black lacquer
Area Classification	UL General Purpose
Wiring Options	3ft PVC lead wire
Regional Certification	No regional certification
Custom Field	

## WIRING DIAGRAM

PVC/PTFE LEADS – 4 WIRE  
SPDT



Current as of July 20, 2017 – Subject to change without notice.

## NAMEPLATE



TYPE 4X  
ELECTRICAL RATING: 120VAC/10A, 24VDC/3A RESISTIVE; 480VAC/240VDC MAX

Model #:

Serial #:

**GO**  
SWITCH

**TOPWORX**

Pneutrol International Limited  
UK Office  
5 Caulside Drive, Antrim, BT41 2DU  
United Kingdom  
TEL: +44 (0) 28 9448 1800  
www.pneutrol.com/industrialspares

**Pneutrol**  
Leading Industrial Solutions

sales@pneutrol.com  
European Office  
Unit 6, Saint Anthony's Business Park, Ballymount Road, D22 VW95  
Ireland  
TEL: +353 (0) 1 4373653  
www.pneutrol.com/industrialspares