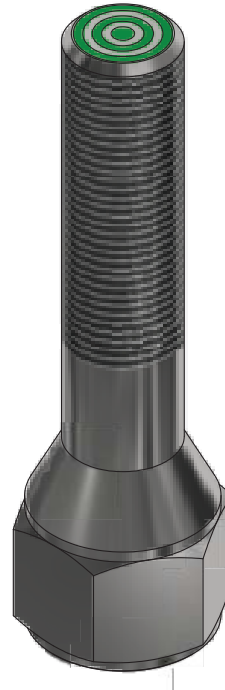


MODEL 73: 5/8-18  
MODEL 73M: M18-1



## MODEL NUMBER

73-13564-A2

## PRODUCT LINE

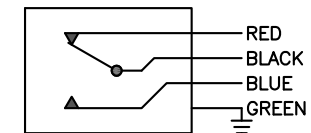
GO™ Switch 70 Series Hex Head

## SPECIFICATIONS

Model	73 Model
Contact Form	SPDT
Sensing Range	0.100" end sensing
Outlet Position	Bottom of enclosure
Enclosure Material	316L Stainless Steel
Area Classification	cUL Cl I, Div 1
Wiring Option	PVC leads, 3ft
Regional Certification	No Regional Certification
Custom Field	

## WIRING DIAGRAM

PVC/PTFE LEADS – 4 WIRE  
SPDT



## NAMEPLATE



Class I, Division 1, Groups A,B,C,D; Type 4X  
Class II, Division 1, Groups E,F,G; Class III  
120VAC/4A; 24VDC/3A  
Conduit: 1/2 NPT - Lead Seal Required

**GO**  
SWITCH

Current as of July 20, 2017 – Subject to change without notice.

**TOPWORX**  
Pneutrol International Limited  
UK Office  
5 Caulside Drive, Antrim, BT41 2DU  
United Kingdom  
TEL: +44 (0) 28 9448 1800  
www.pneutrol.com/industrialspares

**Pneutrol**  
Leading Industrial Solutions  
sales@pneutrol.com  
European Office  
Unit 6, Saint Anthony's Business Park, Ballymount Road, D22 VW95  
Ireland  
TEL: +353 (0) 1 4373653  
www.pneutrol.com/industrialspares