

MODEL 73: 5/8-18
MODEL 73M: M18-1



MODEL NUMBER

73-13568-A4

PRODUCT LINE

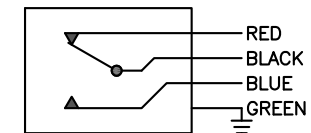
GO™ Switch 70 Series Hex Head

SPECIFICATIONS

Model	73 Model
Contact Form	SPDT
Sensing Range	0.100" end sensing
Outlet Position	Bottom of enclosure
Enclosure Material	316L Stainless Steel
Area Classification	UL General Purpose
Wiring Option	PVC leads, 12ft
Regional Certification	No Regional Certification
Custom Field	

WIRING DIAGRAM

PVC/PTFE LEADS – 4 WIRE
SPDT



NAMEPLATE



Type 4X
120VAC/4A; 24VDC/3A
Conduit: 1/2 NPT

GO
SWITCH

Current as of July 20, 2017 – Subject to change without notice.

TOPWORX
Pneutrol International Limited
UK Office
5 Caulsde Drive, Antrim, BT41 2DU
United Kingdom
TEL: +44 (0) 28 9448 1800
www.pneutrol.com/industrialspares

Pneutrol
Leading Industrial Solutions
sales@pneutrol.com
European Office
Unit 6, Saint Anthony's Business Park, Ballymount Road, D22 VW95
Ireland
TEL: +353 (0) 1 4373653
www.pneutrol.com/industrialspares