

MODEL 73: 5/8-18  
MODEL 73M: M18-1



#### MODEL NUMBER

73-13569-B2

#### PRODUCT LINE

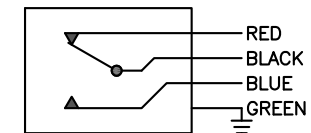
GO™ Switch 70 Series Hex Head

#### SPECIFICATIONS

Model	73 Model
Contact Form	SPDT
Sensing Range	0.100" end sensing
Outlet Position	Bottom of enclosure
Enclosure Material	316L Stainless Steel
Area Classification	UL General Purpose
Wiring Option	PVC leads, 12ft
Regional Certification	No Regional Certification
Custom Field	

#### WIRING DIAGRAM

PVC/PTFE LEADS – 4 WIRE  
SPDT



#### NAMEPLATE



Type 4X  
120VAC/4A; 24VDC/3A  
Conduit: 1/2 NPT

**GO**  
SWITCH

Current as of July 20, 2017 – Subject to change without notice.

**TOPWORX**

Pneutrol International Limited  
UK Office  
5 Caulside Drive, Antrim, BT41 2DU  
United Kingdom  
TEL: +44 (0) 28 9448 1800  
www.pneutrol.com/industrialspares

**Pneutrol**  
Leading Industrial Solutions

sales@pneutrol.com  
European Office  
Unit 6, Saint Anthony's Business Park, Ballymount Road, D22 VW95  
Ireland  
TEL: +353 (0) 1 4373653  
www.pneutrol.com/industrialspares