

# Compressed air maintenance unit, series AS3-Inch

Filling valve (soft start) AS3-SSV, 3/8 NPT - 1/2 NPT, ATEX approved

**AVENTICS**®



## Technical Data

Type	Poppet valve
Operating pressure	36 ... 232 psi
Nominal flow qn	see table
Secondary pressure	91 psi and $\Delta p = 15$ psi
Ambient temperature	-10 °C to +50 °C (14 °F to +122 °F) *
Medium	Compressed air
Weight	see table
Installation position	any

Materials (body)	Polamide, seals Buna-N(NBR)
Threaded bushing	Die-cast zinc

Cover	ABS
-------	-----

ATEX:	In zone 1 (gas-ex, category 2G) In zone 21 (dust-ex, category 2D) In zone 2 (gas-ex, category 3G) In zone 22 (dust-ex, category 3D)
-------	--

\* with dried air

### Version:

Opening pressure: approx. 50% of input pressure  
Actuating method: via secondary pressure  
Only for closed systems  
Please observe note regarding compressed air preparation!

Slowly builds up the pressure in pneumatic installations, i.e. prevents sudden pressure build-up after a restart following mains pressure failure or EMERGENCY OFF, thus preventing dangerous, sudden cylinder movements.



### Part no.

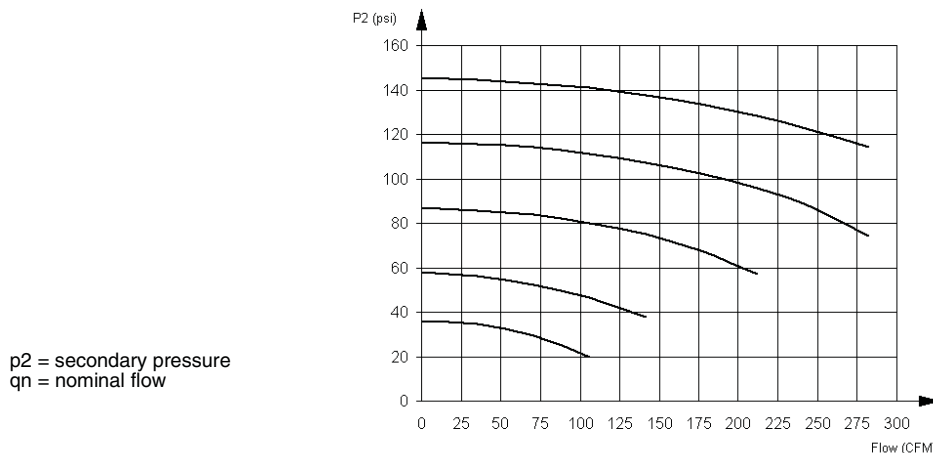
Symbol	Threaded ports	Nominal flow qn [CFM]	With options	Weight [lbs]	Part no.
	3/8 NPT	159	Filling adjustable	0.95	R432002187 R432031481*
	1/2 NPT	159	Filling adjustable	0.95	R432002188 R432003281*

\*Version for air flow from right to left.

### Accessories (to be ordered separately)

	Accessory	Part no.
	Mounting plate AS3-MBR-...-W01	R432031072
	Mounting strap AS3-MBR-...-W03	R412007370
	Block assembly kit AS3-MBR-...-W04	R412007371

### Flow rate characteristic

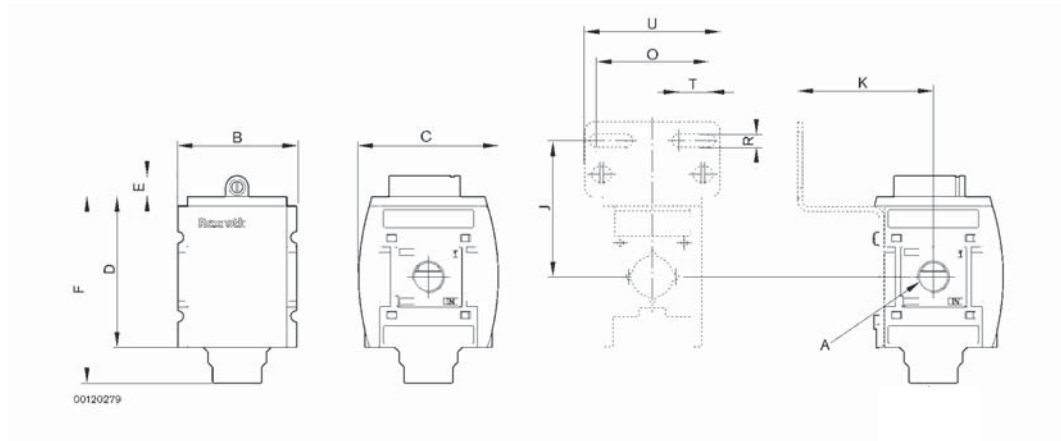


Pneutrol International Limited  
UK Office  
5 Caulside Drive, Antrim, BT41 2DU  
United Kingdom  
TEL: +44 (0) 289448 1808  
www.valves-direct.com

sales@pneutrol.com  
European Office  
Unit 6, Saint Anthony's Business Park, Ballymount Road, D22 VW95  
Ireland  
TEL: +353 (0) 1 4373653  
www.valves-direct.com

# Compressed air maintenance unit, series AS3-Inch

Filling valve (soft start) AS3-SSV, 3/8 NPT - 1/2 NPT, ATEX approved



(mounting bracket not included, order separately)

A	B	C	D	E	F	J	K	O	R	T	U
3/8" NPT	2.480	2.913	3.150	0.433	3.898	2.854	2.598	2.362	0.276	0.630	2.835
1/2" NPT	2.480	2.913	3.150	0.433	3.898	2.854	2.598	2.362	0.276	0.630	2.835

Dimensions in inches.

Pneutrol International Limited  
 UK Office  
 5 Caulside Drive, Antrim, BT41 2DU  
 United Kingdom  
 TEL: +44 (0) 289448 1808  
 www.valves-direct.com

sales@pneutrol.com  
 European Office  
 Unit 6, Saint Anthony's Business Park, Ballymount Road, D22 VW95  
 Ireland  
 TEL: +353 (0) 1 4373653  
 www.valves-direct.com