

Compressed air maintenance unit, series AS2-Inch

FR+L Maintenance unit AS2-ACD, 2-in-1, 1/4 NPT - 3/8 NPT, ATEX approved

AVENTICS[®]



Technical Data		
Type	Filter Pressure regulator	Filter element replaceable Diaphragm-type pressure regulator with relief opening and reverse flow capability Regulator knob lockable
	Lubricator	Standard oil-drop lubricator with semi-automatic oil filling Fill level – sight glass with slotted screw adjustment for oil metering. Can be filled with oil during operation
Supply pressure	Condensate drain	semi-automatic: 7 - 232 psi fully automatic : 21 - 232 psi 116 psi (max.) See table
Secondary pressure		
Nominal flow qn		See table
Secondary pressure = 91 psi and Δp = 15 psi		
Temperature range		–10 °C to +50 °C (14 °F to +122 °F) *
Medium		Compressed air
Weight		See table
Installation position		Vertical
Materials	Body Thread insert Reservoir Bowl guard Cover Filter element	Polyamide, seals Buna-N(NBR) Die-cast zinc Polycarbonate or die cast zinc, with bayonet catch Polyamide (polycarbonate bowls only) ABS Polyethylene
Reservoir capacity	Filter Lubricator	28 cm³ (0.95 U.S. Fl.oz.) 40 cm³ (1.69 U.S. Fl.oz.)
Filter porosity		5 µm
ATEX:	In zone 1 (gas-ex, category 2G) In zone 21 (dust-ex, category 2D) In zone 2 (gas-ex, category 3G) In zone 22 (dust-ex, category 3D)	



* with dried air

Filter for separating solid impurities up to 5 µm from compressed air and gases

For quality classes according to DIN ISO 8573-1

- Solid impurities: class 3

- Humidity - water content: class 8

Oil type: HL 68 (DIN 51 524 - ISO VG 68)

Standard values for oil metering: 1-2 drops / min at a nominal flow rate of qn = 35 CFM

Plastic containers may only be cleaned with water, soap suds, and other similar, neutral agents.

► - semi and fully automatic condensate drain *

*either opened without pressure (NO) or closed without pressure (NC)

Note: All Series AS filter drains include a manual drain function as standard.

Part no.						
Symbol	Threaded ports	Nominal flow qn [CFM]	Supply pressure [psi]	Options	Weight [lbs]	Part no. with pressure gauge (Poly./Metal)
	1/4 NPT	64	7 ... 232	Polycarbonate w/guard or metal bowl, semi-automatic, without pressure: open	1.4	R432000692/R432000695
	1/4 NPT	64	21 ... 232	Polycarbonate w/guard or metal bowl, fully automatic, without pressure: open	1.49	R432000693/R432000696
	1/4 NPT	64	0 ... 232	Polycarbonate w/guard or metal bowl, fully automatic, without pressure: closed	1.49	R432000694/R432000697
	3/8 NPT	71	7 ... 232	Polycarbonate w/guard or metal bowl, semi-automatic, without pressure: open	1.4	R432000698/R432000701
	3/8 NPT	71	21 ... 232	Polycarbonate w/guard or metal bowl, fully automatic, without pressure: open	1.49	R432000699/R432000702
	3/8 NPT	71	0 ... 232	Polycarbonate w/guard or metal bowl, fully automatic, without pressure: closed	1.49	R432000700/R432000703

Accessories (to be ordered separately)		
Accessory		Part no.
	Spare parts kit: see filter pressure regulator valve AS2-FRE and oil-drop lubricator AS2-LBS	
	Mounting plate AS2-MBR-...-W01	R432031071
	Mounting strap AS2-MBR-...-W03	R412006370
	Block assembly kit AS2-MBR-...-W04	R412006371

Pneutrol International Limited
UK Office
5 Caulside Drive, Antrim, BT41 2DU
United Kingdom
TEL: +44 (0) 289448 1808
www.valves-direct.com

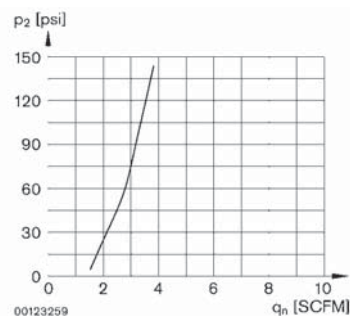
sales@pneutrol.com
European Office
Unit 6, Saint Anthony's Business Park, Ballymount Road, D22 VW95
Ireland
TEL: +353 (0) 1 4373653
www.valves-direct.com

Compressed air maintenance unit, series AS2-Inch

FR+L Maintenance unit AS2-ACD, 2-in-1, 1/4 NPT - 3/8 NPT, ATEX approved

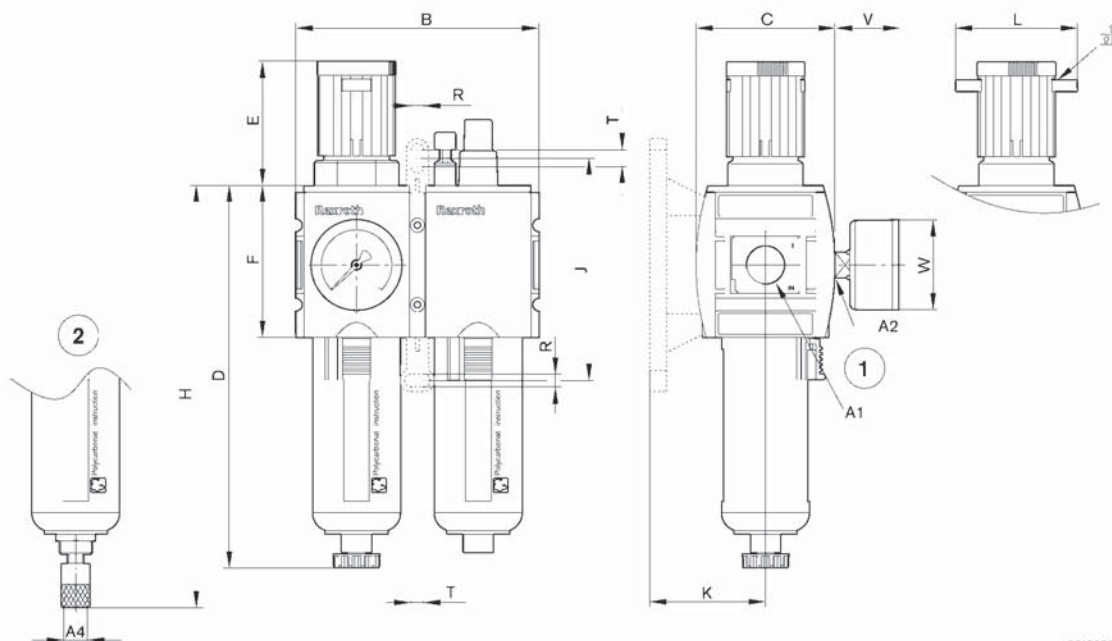
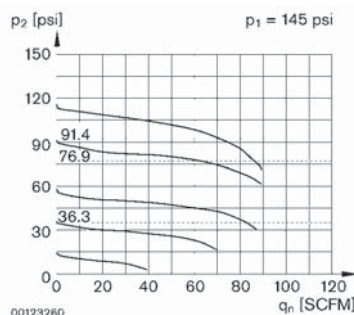
AVENTICS[®]

Lubrication activation margin



p_1 = Supply pressure; p_2 = Secondary pressure; q_n = Nominal flow

Flow rate characteristic (setting range p_2 : 0.5 to 8 bar) (7 to 116 psi)



- 1) Semi-automatic condensate drain
- 2) Fully automatic condensate drain

A1	A2	A4	B	C	D	E	F	H	J	K	L	R	T	V	W
1/4 NPT	1/4 NPT	G 1/8	4.094	2.323	6.437	2.094	2.559	7.106	3.740	1.945	2.047	0.213	0.287	1.378	2
3/8 NPT	1/4 NPT	G 1/8	4.094	2.323	6.437	2.094	2.559	7.106	3.740	1.945	2.047	0.213	0.287	1.378	2

Dimensions in inches