

Series NU2

- Bulkhead connector
- Internal thread
- M5 G 1/8 G 1/4 G 3/8
- plug-in with tube nut
- Ø 3 Ø 4 Ø 6 Ø 9
- NU2-S-RSI



Working pressure min./max.

-0,95 ... 15 bar

Ambient temperature min./max.

-25 ... 70 °C

Weight

See table below

Technical data

Part No.	Port G	Port D	Delivery unit	Weight
1823391306	M5	Ø 3	2 piece	0,013 kg
1823391307	G 1/8	Ø 4	2 piece	0,031 kg
1823391308	G 1/8	Ø 6	2 piece	0,038 kg
1823391309	G 1/4	Ø 6	2 piece	0,052 kg
1823391310	G 1/4	Ø 9	2 piece	0,071 kg
1823391311	G 3/8	Ø 6	2 piece	0,066 kg

Weight per piece

Technical information

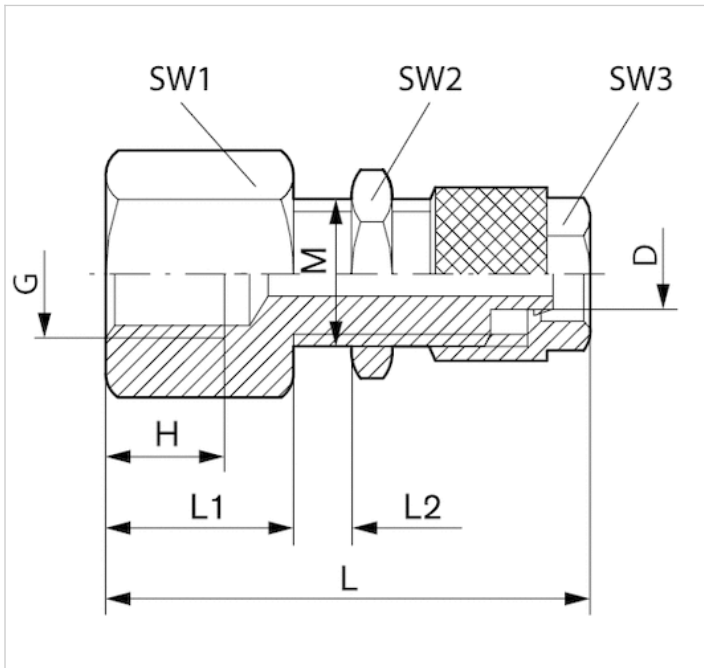
For use up to -40 °C when using with compressed air tubing series TU1-S-PAM Ø4x1, Ø6x1, Ø8x1, Ø10x1, Ø12x1.5

For further information about assembling and tolerances of adaptable tubing can be found in the "Technical information" document (available in the MediaCentre).

Technical information

Material	
Housing	Brass, nickel-plated

Dimensions



Dimensions

Part No.	Port D	Port G	H	L	L1	L2 1)	M	SW 1	SW 2	SW 3
1823391306	Ø 3	M5	4.5	29	8	8	M7x0,75	9	10	8
1823391307	Ø 4	G 1/8	8	38	12	10	M10x1	13	14	10
1823391308	Ø 6	G 1/8	12	39	12	10	M12x1	17	17	12
1823391309	Ø 6	G 1/4	12	45	18	10	M12x1	17	17	12
1823391310	Ø 9	G 1/4	12	47	18	10	M16x1	22	19	15
1823391311	Ø 6	G 3/8	12	46	19	10	M12x1	17	17	12

1) Max.

Connection D = inside diameter of the tubing to be used