

Elbow fitting

- External thread
- R 1/8 R 1/4 R 3/8 R 1/2 R 3/4 R 1
- Internal thread
- G 1/8 G 1/4 G 3/8 G 1/2 G 3/4 G 1
- FPT-S-RVT



Working pressure min./max.

0 ... 16 bar

Ambient temperature min./max.

-20 ... 80 °C

Technical data

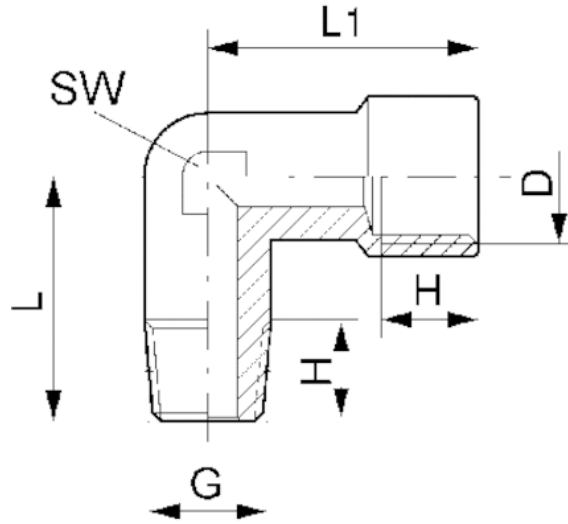
Part No.	Port G	Port D	Delivery unit
1823391727	R 1/8	G 1/8	10 piece
1823391728	R 1/4	G 1/4	10 piece
1823391729	R 3/8	G 3/8	5 piece
1823391730	R 1/2	G 1/2	5 piece
1823391731	R 3/4	G 3/4	2 piece
1823391732	R 1	G 1	2 piece

Technical information

Material	
Material	Brass, nickel-plated

Dimensions

Dimensions



Dimensions

Part No.	Port D	Port G	H1	H2	L	L1	SW
1823391727	G 1/8	R 1/8	8	7	19	21	10
1823391728	G 1/4	R 1/4	11	9	24	25.5	13
1823391729	G 3/8	R 3/8	11.5	9.5	26.5	28	17
1823391730	G 1/2	R 1/2	13	13	30.5	33	21
1823391731	G 3/4	R 3/4	14	14	32	36	25
1823391732	G 1	R 1	15	15	39	45	30