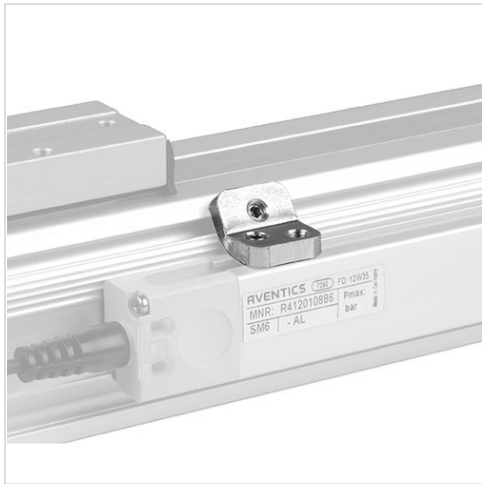


Sensor mounting, Series CB1

- for series SM6-AL

- to mount on cylinder RTC



Weight

0,007 kg

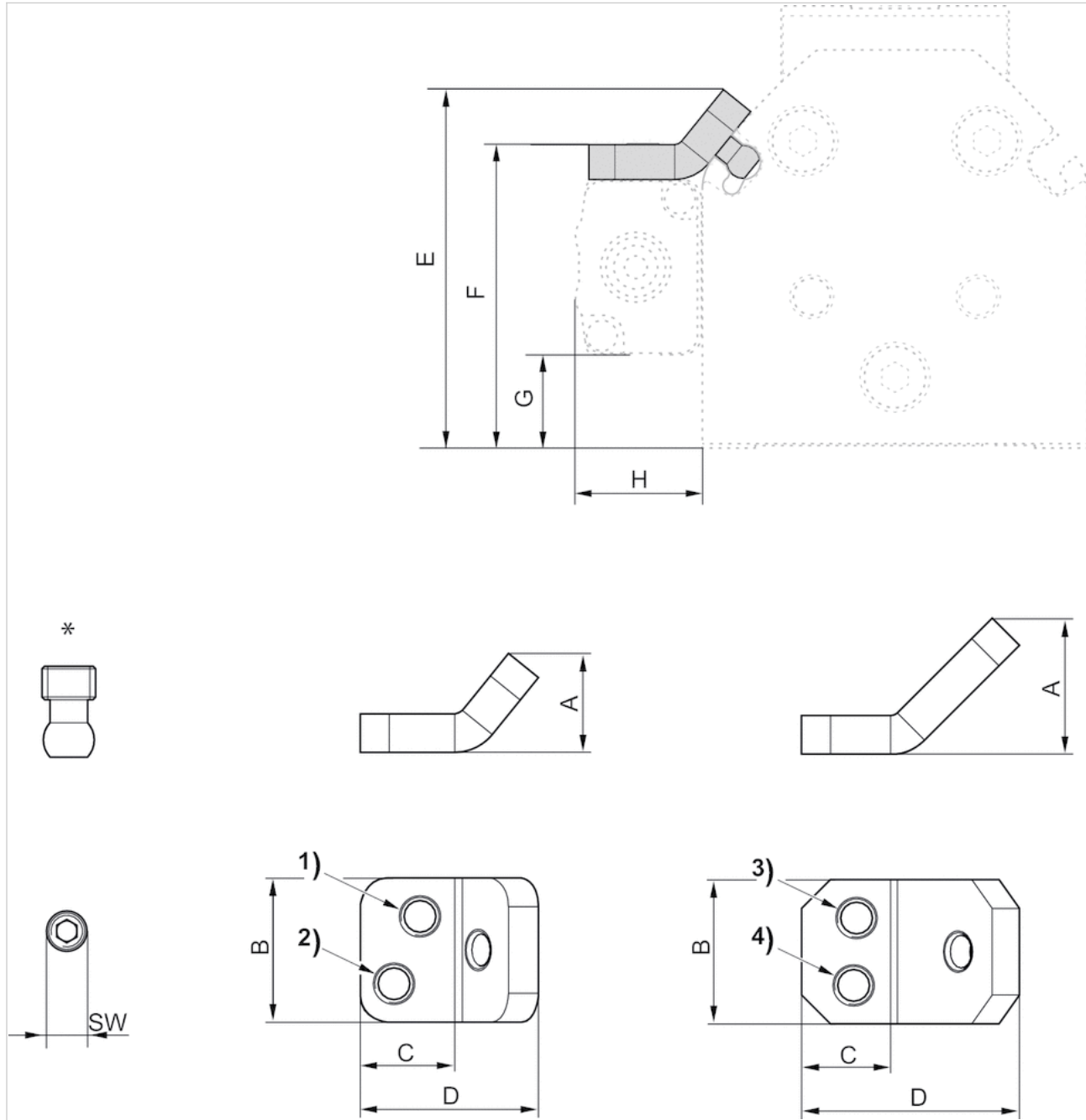
Technical data

Part No.	for series	Scope of delivery
R412022298	SM6-AL	1 piece

Technical information

Material
Aluminum

Dimensions



* Threaded pin (brass)

2 clamp mounting sets for SM6-AL 109 - 469 mm
3 clamp mounting sets for SM6-AL 505 - 793 mm
4 clamp mounting sets for SM6-AL 829 - 1009 mm

Dimensions

Part No.	Piston Ø		A	B	C	D	E
R412022298	25324050	1)2)3)4)	10,310,314,214,2	15151515	9,89,89,29,2	18,518,522,622,6	4146,75560,6
	F		G		H		SW
	34,740,445,250,5		10,716,421,126,5		14,414,414,414,4		2222