

Pressure regulator, Series AS1-RGS-...-DS

- G 1/4
- Air supply left
- Qn = 1000 l/min
- Standard pressure regulator
- Activation Manual
- with continuous pressure supply
- with pressure gauge in hand wheel






Parts

Mounting orientation	Pressure regulator with continuous pressure supply
Working pressure min./max.	Any
Ambient temperature min./max.	See table
Medium temperature min./max.	-10 ... 50 °C
Medium	-10 ... 50 °C
Regulator type	Compressed air Neutral gases
Regulator function	Diaphragm-type pressure regulator Can be assembled into blocks with relieving air exhaust
Adjustment range min./max.	See table
Pressure supply	double
Activation	Manual
Weight	0,239 kg



Technical data

Part No.		Port	Flow	Working pressure min./max.	Adjustment range min./max.
			Qn		
R412014642		G 1/4	1000 l/min	0,2 ... 12 bar	0,2 ... 4 bar
R412014643		G 1/4	1000 l/min	0,5 ... 12 bar	0,5 ... 8 bar
R412014644		G 1/4	1000 l/min	0,5 ... 12 bar	0,5 ... 10 bar

Part No.	Pressure gauge
R412014642	with pressure gauge in hand wheel
R412014643	with pressure gauge in hand wheel
R412014644	with pressure gauge in hand wheel

Technical information

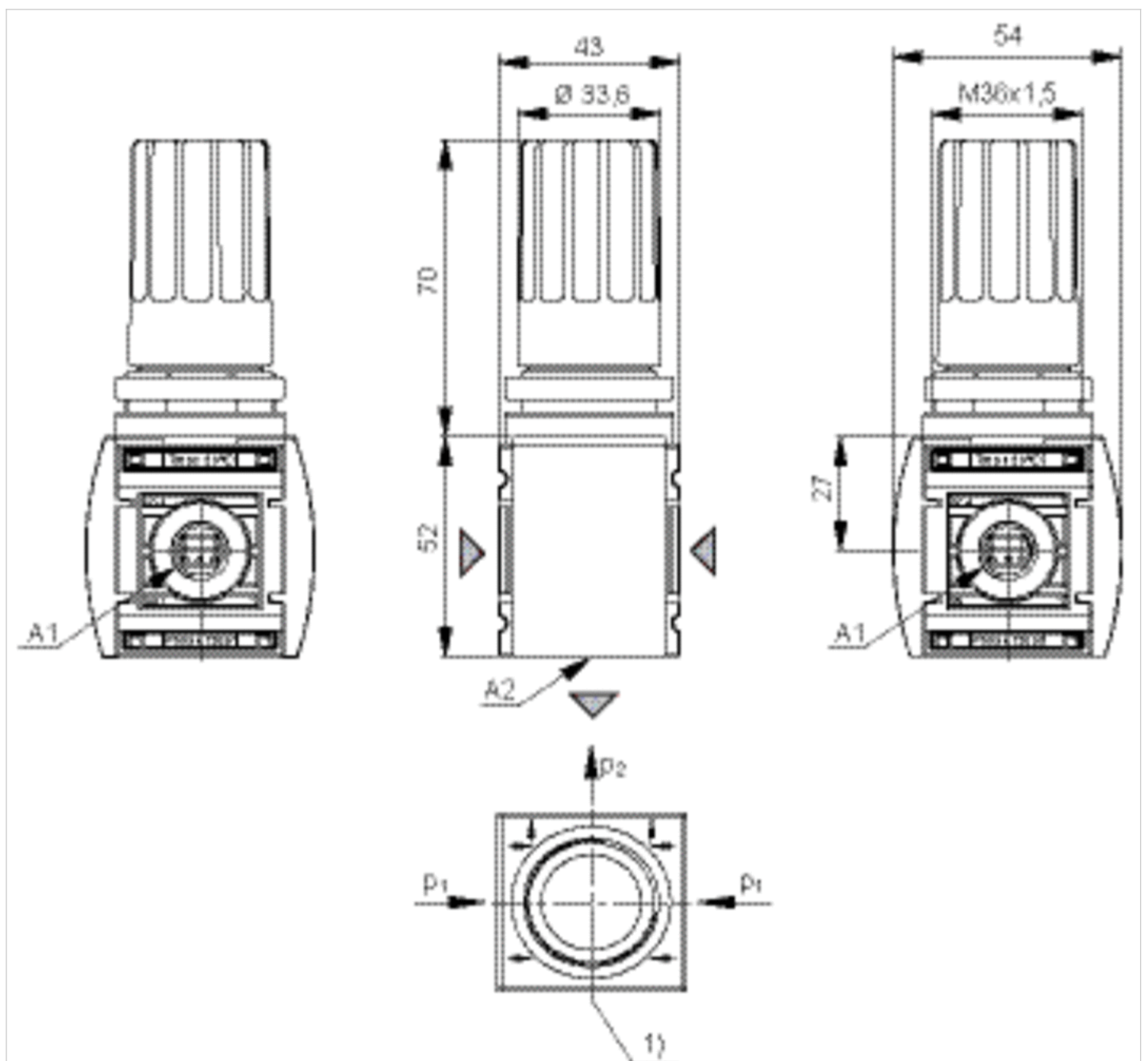
The pressure dew point must be at least 15 °C under ambient and medium temperature and may not exceed 3 °C .
Relieving exhaust (≤ 0.3 bar over set pressure)
With rear exhaust (> 3 bar)

Technical information

Material	
Housing	Polyamide
Front plate	Acrylonitrile butadiene styrene
Seals	Acrylonitrile butadiene rubber

Dimensions

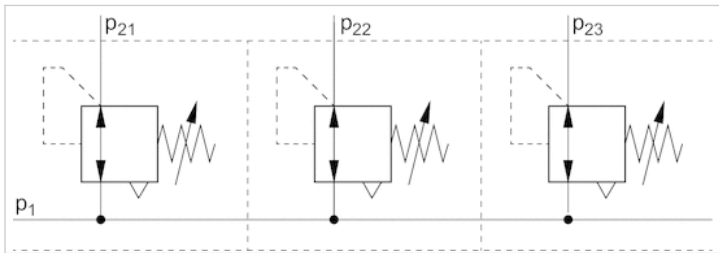
Dimensions



A1 = input
A2 = output

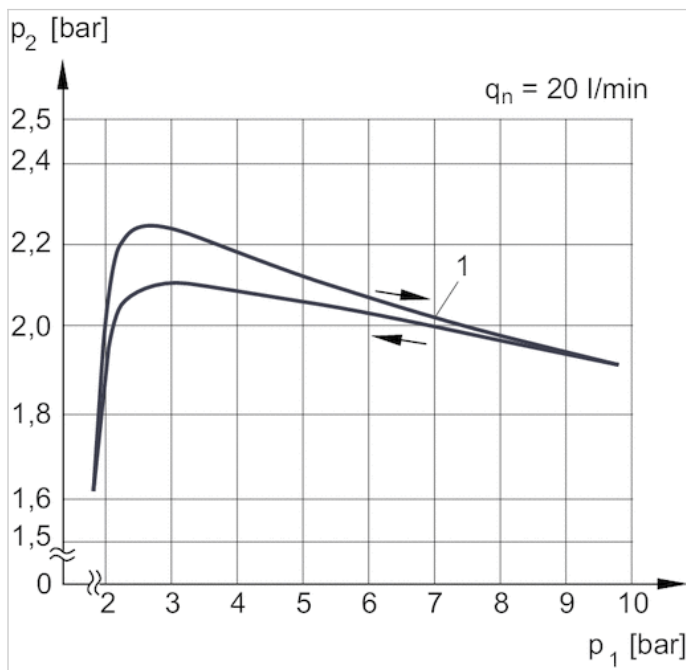
Diagrams

Application example



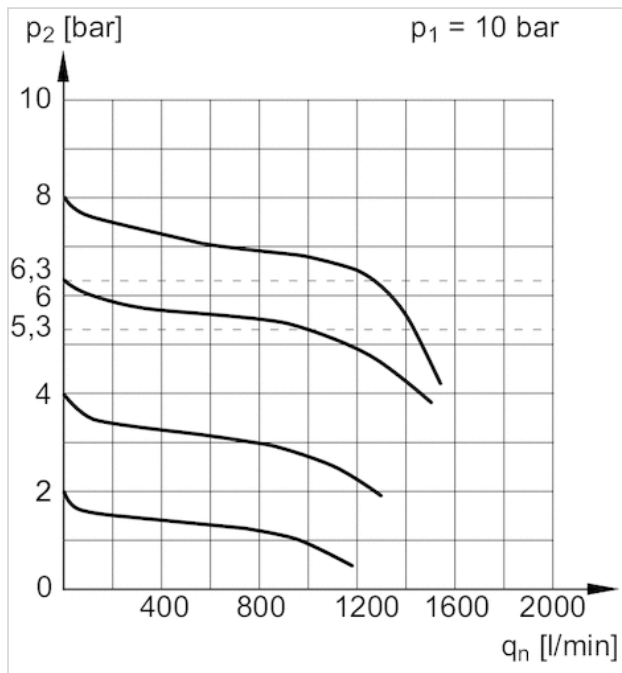
p_1 = working pressure
 p_{21} ; p_{22} ; p_{23} = secondary pressure

Pressure characteristics curve



p_1 = Working pressure
 p_2 = Secondary pressure
 q_n = Nominal flow
1) = Starting point

Flow rate characteristic



p_1 = Working pressure p_2 = Secondary pressure q_n = Nominal flow