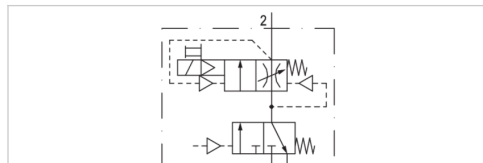


Filling unit, pneumatically operated, Series AS2-SSU

- adjustable filling time and change-over pressure
- Compressed air connection G 1/4
- Pipe connection



Version	Poppet valve, Can be assembled into blocks
Pilot	internal
Sealing principle	Soft sealing
Working pressure min./max.	0 ... 16 bar
Control pressure min./max.	2,5 ... 16 bar
Ambient temperature min./max.	-10 ... 50 °C
Medium temperature min./max.	-10 ... 50 °C
Medium	Compressed air Neutral gases
Max. particle size	25 µm
Duty cycle	100 %
Protection class according to EN 60529:2000, without electrical connector	IP65
Weight	0,424 kg

The delivered product varies from that in the illustration. See the drawing for an exact description.

Technical data

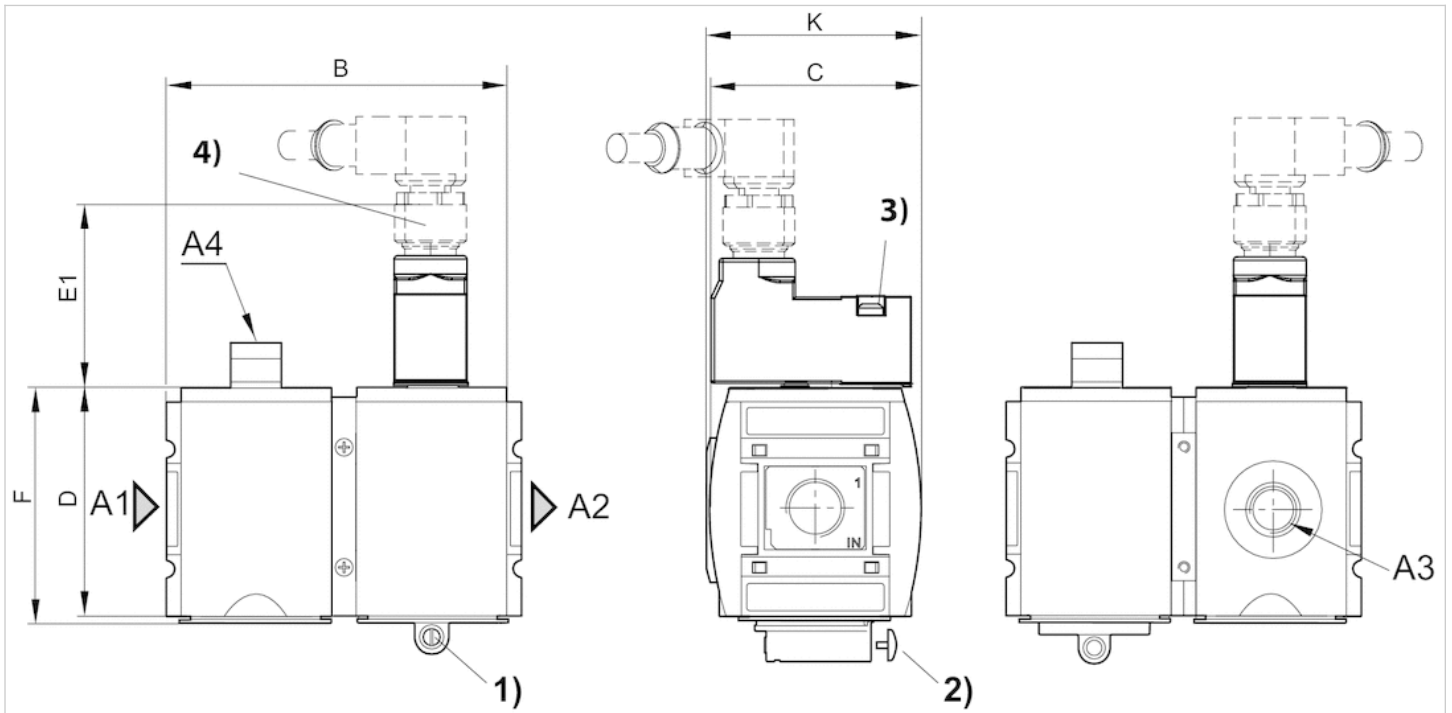
Part No.	Port	Pilot connection	Exhaust	Flow	Flow	Flow
				Qn	Qn 1→2	Qn 2→3
R412006382	G 1/4	G 1/8	G 1/4	2000 l/min	2000 l/min	380 l/min

Technical information

Material	
Housing	Polyamide
Front plate	Acrylonitrile butadiene styrene
Seals	Acrylonitrile butadiene rubber
Threaded bushing	Die cast zinc

Dimensions

Dimensions



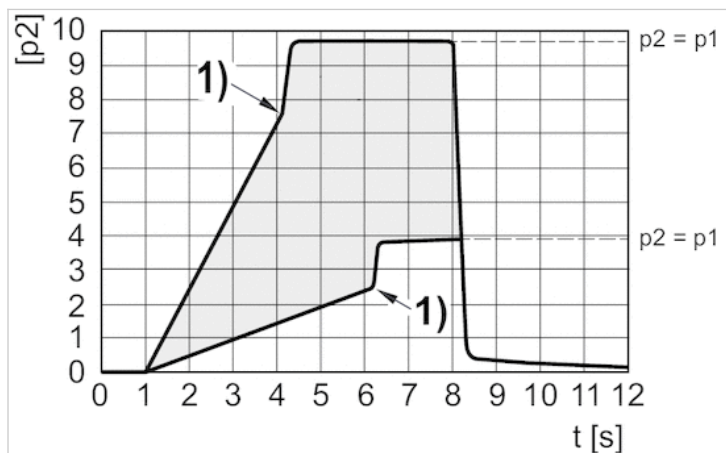
- A1 = input A2 = output
- A3 = ventilation port A4 = control pressure connection
- 1) Adjustment screw for filling time
- 2) Adjustment screw lock
- 3) plug M12
- 4) Manual override

Dimensions in mm

A1	A2	A3	A4	B	C	D	E1	F	K
G 1/4	G 1/4	G 1/4	G 1/8	104	59	65	39	67	60.9

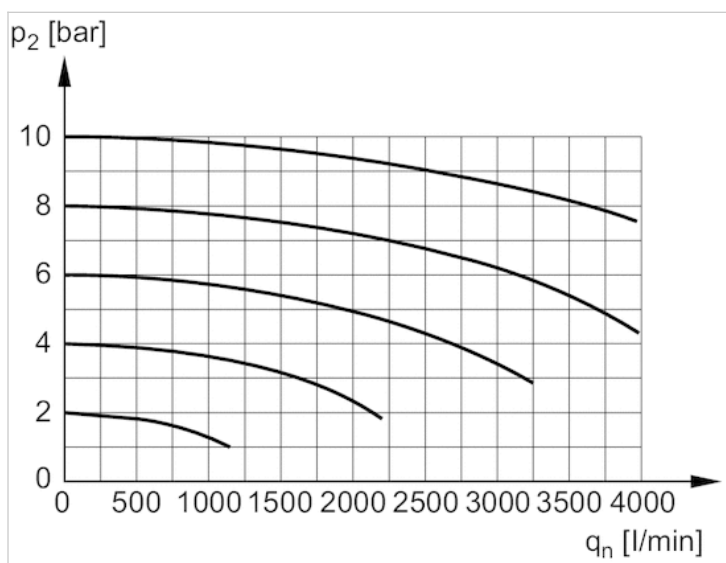
Diagrams

Secondary pressure while filling



- p1 = working pressure
- p2 = secondary pressure
- t = filling time, adjustable via adjustment screw (throttle)
- Change-over pressure individually adjustable via electrical signal
- 1) Switching point: adjustable filling time and change-over pressure

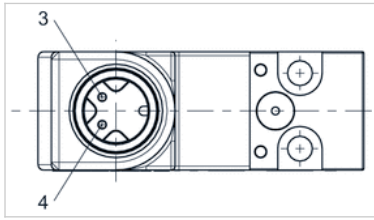
Flow rate characteristic



- p2 = secondary pressure
- qn = nominal flow

Pin assignments

Pin assignment M12x1



3: +/-

4: +/-