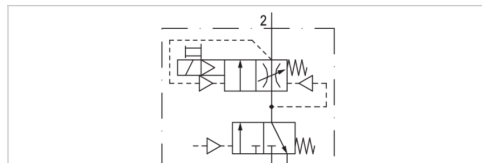


Filling unit, pneumatically operated, Series AS3-SSU

- adjustable filling time and change-over pressure
- Compressed air connection G 1/2
- Pipe connection



Version	Poppet valve, Can be assembled into blocks
Pilot	internal
Sealing principle	Soft sealing
Working pressure min./max.	0 ... 16 bar
Control pressure min./max.	2,5 ... 16 bar
Ambient temperature min./max.	-10 ... 50 °C
Medium temperature min./max.	-10 ... 50 °C
Medium	Compressed air Neutral gases
Max. particle size	25 µm
Duty cycle	100 %
Protection class according to EN 60529:2000, without electrical connector	IP65
Weight	0,924 kg

The delivered product varies from that in the illustration. See the drawing for an exact description.

Technical data

Part No.	Port	Exhaust	Flow	Flow	Flow
			Qn	Qn 1►2	Qn 2►3
R412007393	G 1/2	G 1/2	3500 l/min	3500 l/min	3200 l/min

Technical information

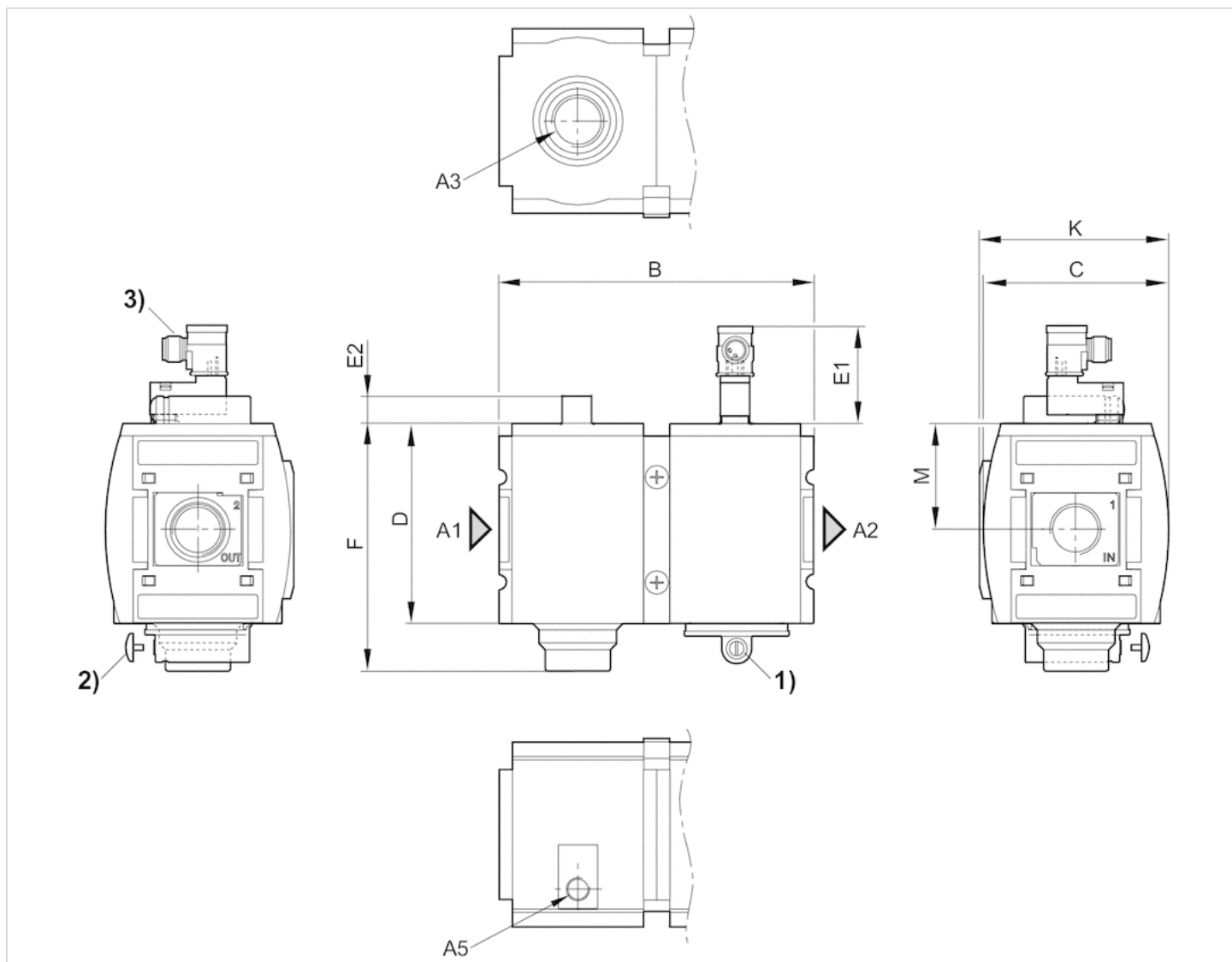
The pressure dew point must be at least 15 °C under ambient and medium temperature and may not exceed 3 °C .
Builds up pressure slowly in the pneumatic systems, i.e. prevents a sudden pressure build-up during a restart after a mains pressure failure or avoids emergency OFF switching. This also avoids dangerous, jerky cylinder movements.
Actuating the electric priority circuit disrupts the slow pressure build-up and pressure p1 is immediately applied.
Do not position filling valves or filling units upstream of open consumers, such as nozzles, air barriers, air curtains, since these may prevent through connection of components.
A change in the flow direction (from air supply on the left to air supply on the right) occurs by rotating installation by 180° about the vertical axis. Please see the operating instructions for further details.

Technical information

Material	
Housing	Polyamide
Front plate	Acrylonitrile butadiene styrene
Seals	Acrylonitrile butadiene rubber
Threaded bushing	Die cast zinc

Dimensions

Dimensions



A1 = input A2 = output A3 = ventilation port

A5 = control pressure connection

1) Adjustment screw for filling time

2) Adjustment screw lock

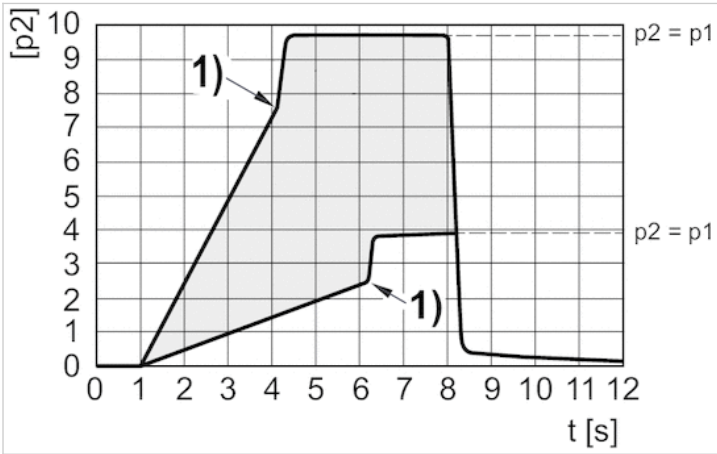
3) For valve plug connectors M12x1

Dimensions in mm

A1	A2	A3	A5	B	C	D	E1	F	K	M
G 1/2	G 1/2	G 1/2	G 1/8	126	74	80	39	99	75.5	42.5

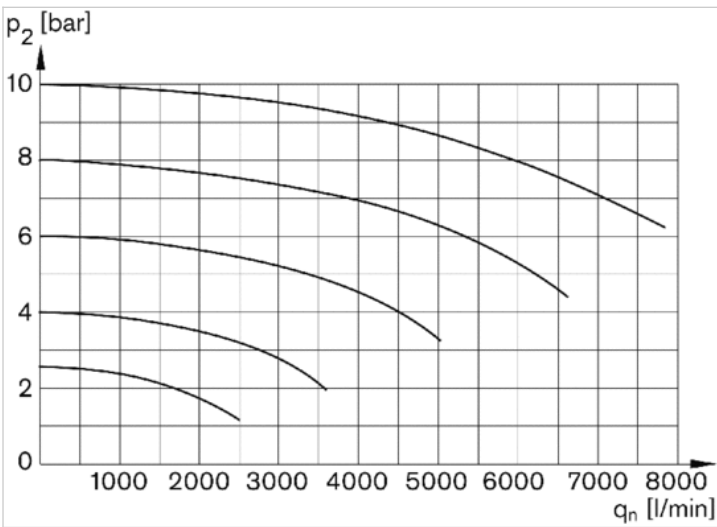
Diagrams

Secondary pressure while filling



- p1 = working pressure
- p2 = secondary pressure
- t = filling time, adjustable via adjustment screw (throttle)
- Change-over pressure individually adjustable via electrical signal
- 1) Switching point: adjustable filling time and change-over pressure

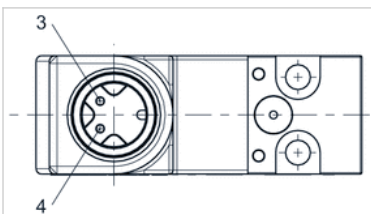
Flow rate characteristic



p2 = secondary pressure
qn = nominal flow

Pin assignments

Pin assignment M12x1



3: +/-

UK Office
5 Caulside Drive
Antrim
BT41 2DU
United Kingdom
+44 (0) 28 9448 1808

European Office
Unit 6, Saint Anthony's Business Park
Dublin
D22 VW95
Ireland
+353 (0) 1 4373653



4: +/-