


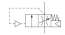
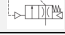
Filling valve, pneumatically operated, Series NL2-SSV

- Compressed air connection G 1/4
- Pipe connection
- suitable for ATEX



Version	Poppet valve, Can be assembled into blocks
Sealing principle	Soft sealing
Certificates	suitable for ATEX
Working pressure min./max.	0 ... 16 bar
Control pressure min./max.	3 ... 16 bar
Ambient temperature min./max.	-10 ... 60 °C
Medium temperature min./max.	-10 ... 60 °C
Medium	Compressed air Neutral gases
Max. particle size	5 µm
Weight	See table

Technical data

Part No.		Port	Flow	Weight	
			Qn		
0821300926		G 1/4	1000 l/min	0,325 kg	1)
0821300925		G 1/4	1000 l/min	0,31 kg	2)

Technical information

2) Suitable for use in Ex zones 1, 2, 21, 22. Filling with fixed diaphragm.

The pressure dew point must be at least 15 °C under ambient and medium temperature and may not exceed 3 °C.

Builds up pressure slowly in the pneumatic systems, i.e. prevents a sudden pressure build-up during a restart after a mains pressure failure or avoids emergency OFF switching. This also avoids dangerous, jerky cylinder movements.

Do not position filling valves or filling units upstream of open consumers, such as nozzles, air barriers, air curtains, since these may prevent through connection of components.

Suitable for use in Ex zones 1, 2, 21, 22

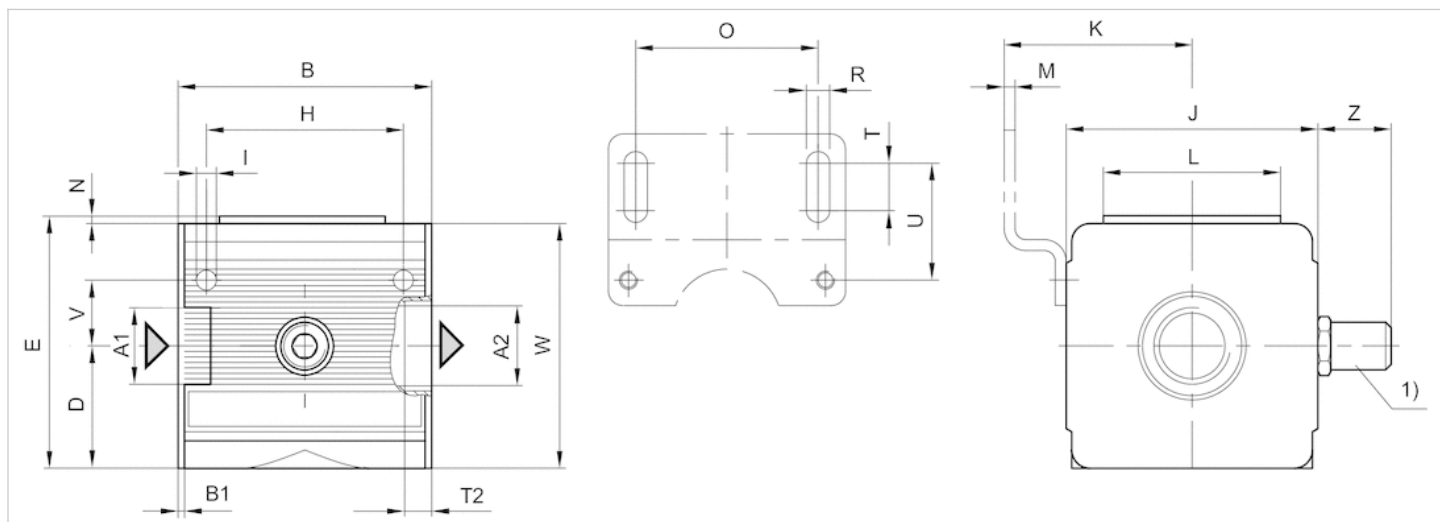
A change in the flow direction (from air supply on the left to air supply on the right) occurs by rotating installation by 180° about the vertical axis. Please see the operating instructions for further details.

Technical information

Material	
Housing	Die cast zinc
Front plate	Acrylonitrile butadiene styrene
Seals	Acrylonitrile butadiene rubber
Threaded bushing	Die cast zinc

Dimensions

Dimensions



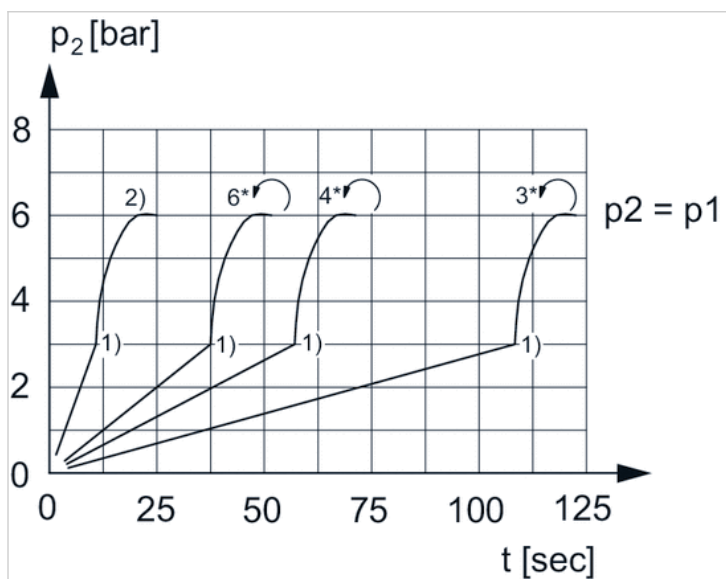
A1 = input A2 = output
1) Adjustment screw for filling time

Dimensions in mm

A1	A2	B	B1	D	E	H	I	J	K	L	M	N	O	R	T	T1	T2	U	V	W	Z
G 1/4	G 1/4	48	1.5	28	56	36	4.4	47	43.5	33.5	3	2	38	5.4	8	1.5	9.5	27.5	12.3	52	20
G 1/4	G 1/4	48	1.5	28	56	36	4.4	47	43.5	33.5	3	2	38	5.4	8	1.5	9.5	27.5	12.3	52	-

Diagrams

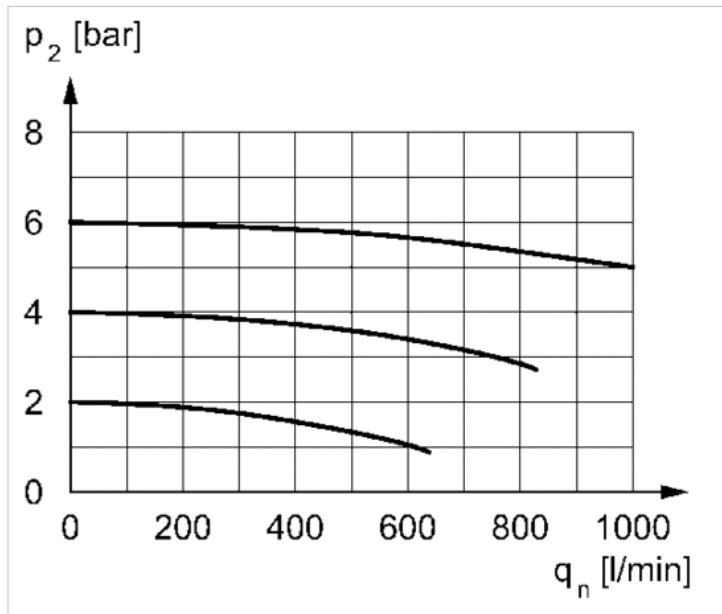
secondary pressure while filling



p1 = working pressure
p2 = secondary pressure
t = filling time, adjustable via adjustment screw (throttle)
1) Switching point: adjustable filling time, fixed change-over pressure $\approx 0.5 \times p1$ (50%)

2) Throttle fully opened
* Adjustment screw rotations

Flow rate characteristic



p_2 = secondary pressure
 q_n = nominal flow