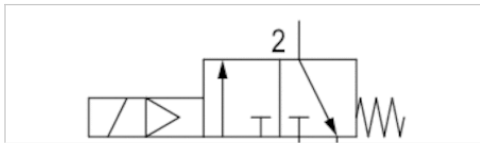





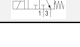

# 3/2-directional valve, electrically operated, Series NL2-SOV

- ATEX optional
- Compressed air connection G 1/4
- Pipe connection
- Electrical connection: Plug, ISO 6952, form B



Version	Poppet valve, Can be assembled into blocks
Parts	3/2-directional valve, electrically operated
Nominal flow 1 ▶ 2	1100 l/min
Nominal flow 2 ▶ 3	450 l/min
Working pressure min./max.	2,5 ... 10 bar
Medium	Compressed air Neutral gases
Medium temperature min./max.	-10 ... 60 °C
Ambient temperature min./max.	-10 ... 60 °C
Pilot	internal
Sealing principle	Soft sealing
Max. particle size	5 µm
Protection class acc. to DIN EN 61140 with plug	IP65
Duty cycle	100 %
Weight	See table

## Technical data

Part No.			Compressed air connection input	Compressed air connection output	Exhaust
0821300922		—	G 1/4	G 1/4	G 1/4
0821300923		—	G 1/4	G 1/4	G 1/4
0821300924		—	G 1/4	G 1/4	G 1/4
0821300929			G 1/4	G 1/4	G 1/4

Part No.	Operationalvoltage	Operationalvoltage	Operationalvoltage	Power consumption
	DC	AC 50 Hz	AC 60 Hz	DC
0821300922	24 V	-	-	4,8 W
0821300923	-	230 V	230 V	-
0821300924	-	-	-	-
0821300929	-	-	-	-

Part No.	Holding power	Switch-on power	Manual override	Electrical connection
	AC 50 Hz	AC 50 Hz		Pilot valve
0821300922	-	-	-	Plug, ISO 6952, form B
0821300923	8,5 VA	11,8 VA	-	Plug, ISO 6952, form B
0821300924	-	-	-	Plug, ISO 6952, form B
0821300929	-	-	with detent	Plug, ISO 6952, form B

Part No.	Connector standard	basic valve with electrical connector	Reverse polarity protection
0821300922	ISO 6952	-	Protected against polarity reversal



Part No.	Connector standard	basic valve with electrical connector	Reverse polarity protection
0821300923	ISO 6952	-	Protected against polarity reversal
0821300924	-	pilot valve without coil	Protected against polarity reversal
0821300929	-	pilot valve without coil	Protected against polarity reversal

Part No.	Weight
0821300922	0,45 kg
0821300923	0,45 kg
0821300924	0,49 kg
0821300929	0,45 kg

## Technical information

The pressure dew point must be at least 15 °C under ambient and medium temperature and may not exceed 3 °C .

ATEX optional: The ATEX ID depends on the selected ATEX coil.

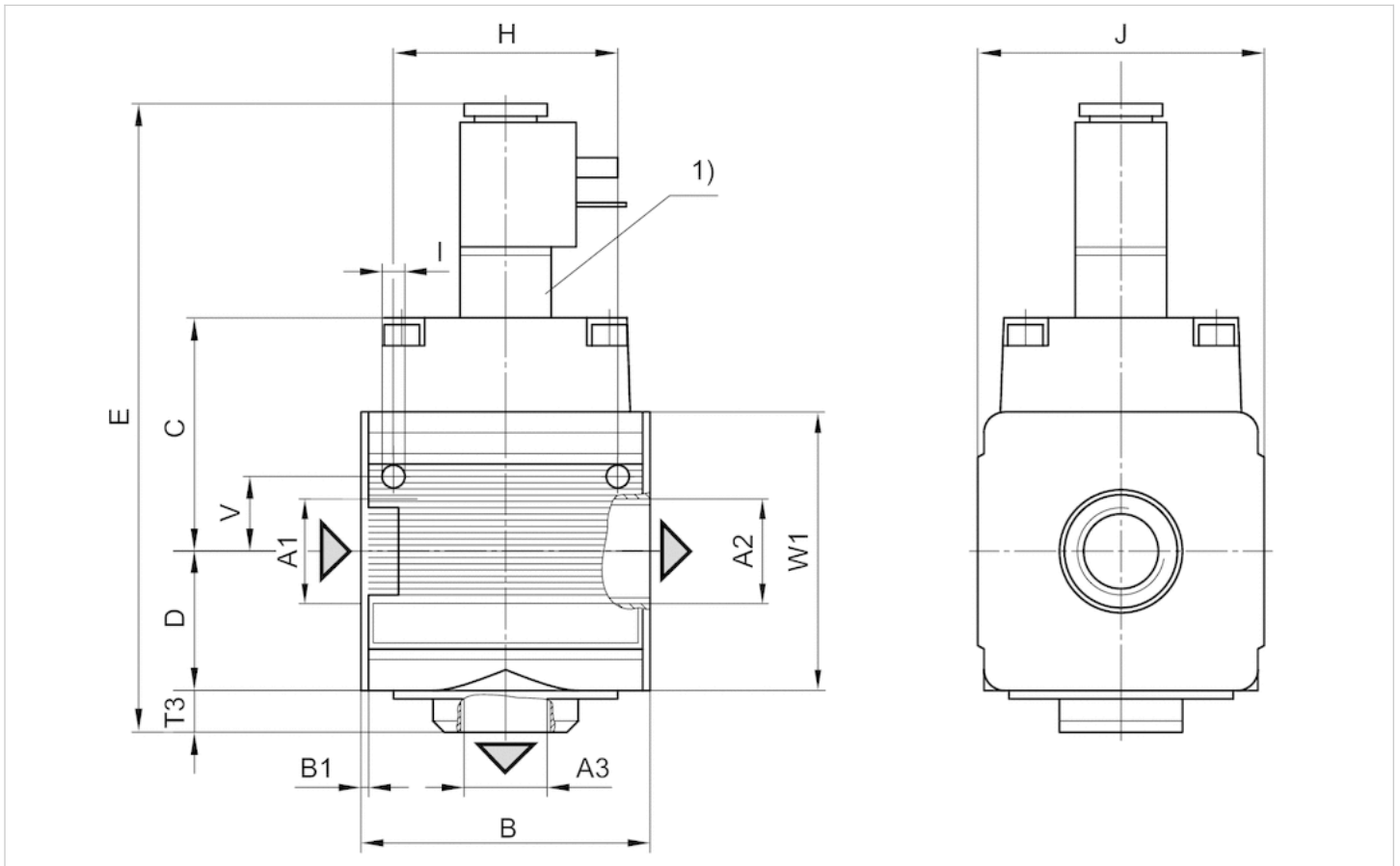
A change in the flow direction (from air supply on the left to air supply on the right) occurs by rotating installation by 180° about the vertical axis. Please see the operating instructions for further details.

## Technical information

Material	
Housing	Die cast zinc
Front plate	Acrylonitrile butadiene styrene
Seals	Acrylonitrile butadiene styrene

# Dimensions

## Dimensions



A1 = input A2 = output A3 = output

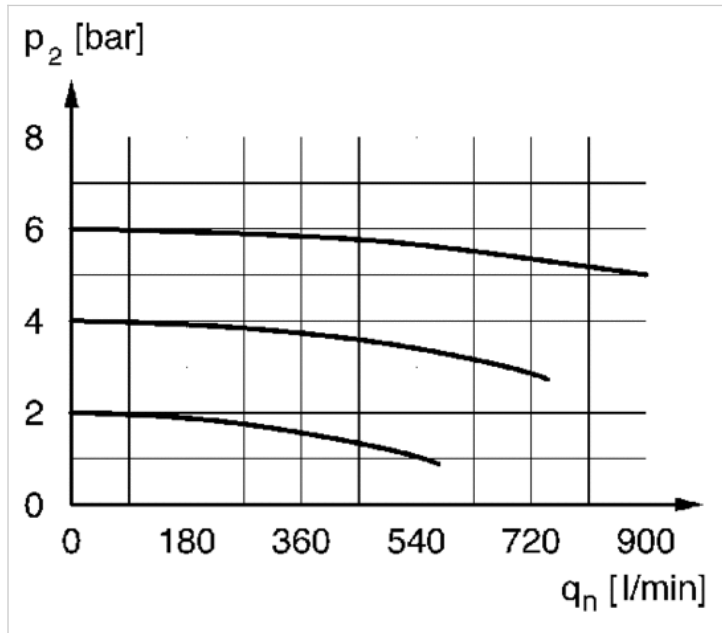
1) electrically operated

## Dimensions in mm

A1	A2	A3	B	B1	C	D	E	H	I	J	T3	V	W1
G 1/4	G 1/4	G 1/4	48	1.5	44	26	131	36	4.4	47	10	12.3	52
G 1/4	G 1/4	G 1/4	48	1.5	44	26	131	36	4.4	47	10	12.3	52

# Diagrams

## Flow rate characteristic



$p_2$  = secondary pressure  
 $q_n$  = nominal flow