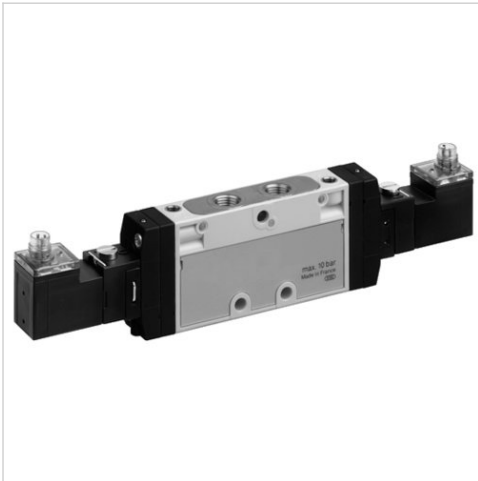




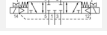



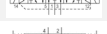

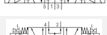


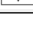
5/3-directional valve, Series TC08

- Operating voltage 24 V DC
- $Q_n = 700$ l/min
- Pilot valve width : 15 mm
- Pipe connection
- Compressed air connection output : G 1/8
- Electrical connection : Plug, M8, 4-pin
- Manual override : with detent
- Double solenoid
- Pilot : internal external



Version	Spool valve, positive overlapping
Activation	Electrically
Sealing principle	Soft sealing
Working pressure min./max.	See table below
Control pressure min./max.	3 ... 10 bar
Ambient temperature min./max.	-10 ... 50 °C
Medium temperature min./max.	-10 ... 50 °C
Medium	Compressed air
Max. particle size	5 µm
Oil content of compressed air	0 ... 5 mg/m ³
Nominal flow Q_n	700 l/min
Connector standard	DIN EN 60947-5-2
Protection class acc. to DIN EN 61140	Class III
Electrically	
Protection class with connection	IP65
LED status display	Yellow
Duty cycle	100 %
Typ. switch-on time	10 ms
Typ. switch-off time	11 ms
Mounting on manifold strip	P-strip
Mounting screw tightening torque	2 Nm
Weight	0,178 kg

Technical data

Part No.		MO	Compressed air connection	
			Input	Output
0820061201			G 1/8	G 1/8
0820061251			G 1/8	G 1/8
0820061211			G 1/8	G 1/8
0820061261			G 1/8	G 1/8
0820061221			G 1/8	G 1/8
0820061271			G 1/8	G 1/8

Part No.	Compressed air connection		Operational voltage		Voltage tolerance	
	Exhaust		DC		DC	
0820061201	G 1/8		24 V		-10% / +10%	
0820061251	G 1/8		24 V		-10% / +10%	
0820061211	G 1/8		24 V		-10% / +10%	
0820061261	G 1/8		24 V		-10% / +10%	
0820061221	G 1/8		24 V		-10% / +10%	
0820061271	G 1/8		24 V		-10% / +10%	

Part No.	Power consumption		Pilot	Flow conductance		Nominal resistance
	DC			b		
0820061201	2,2 W		internal	0,34		280 Ω
0820061251	2,2 W		external	0,34		280 Ω
0820061211	2,2 W		internal	0,34		280 Ω
0820061261	2,2 W		external	0,34		280 Ω
0820061221	2,2 W		internal	0,34		280 Ω
0820061271	2,2 W		external	0,34		280 Ω

Part No.	Working pressure min./max.
0820061201	3 ... 10 bar
0820061251	-0,9 ... 10 bar
0820061211	3 ... 10 bar
0820061261	-0,9 ... 10 bar
0820061221	3 ... 10 bar
0820061271	-0,9 ... 10 bar

Nominal flow Q_n at 6 bar and $\Delta p = 1$ bar, MO = Manual override

Technical information

The min. control pressure must be adhered to, since otherwise faulty switching and valve failure may result!

The pressure dew point must be at least 15 °C under ambient and medium temperature and may not exceed 3 °C .

The oil content of compressed air must remain constant during the life cycle.

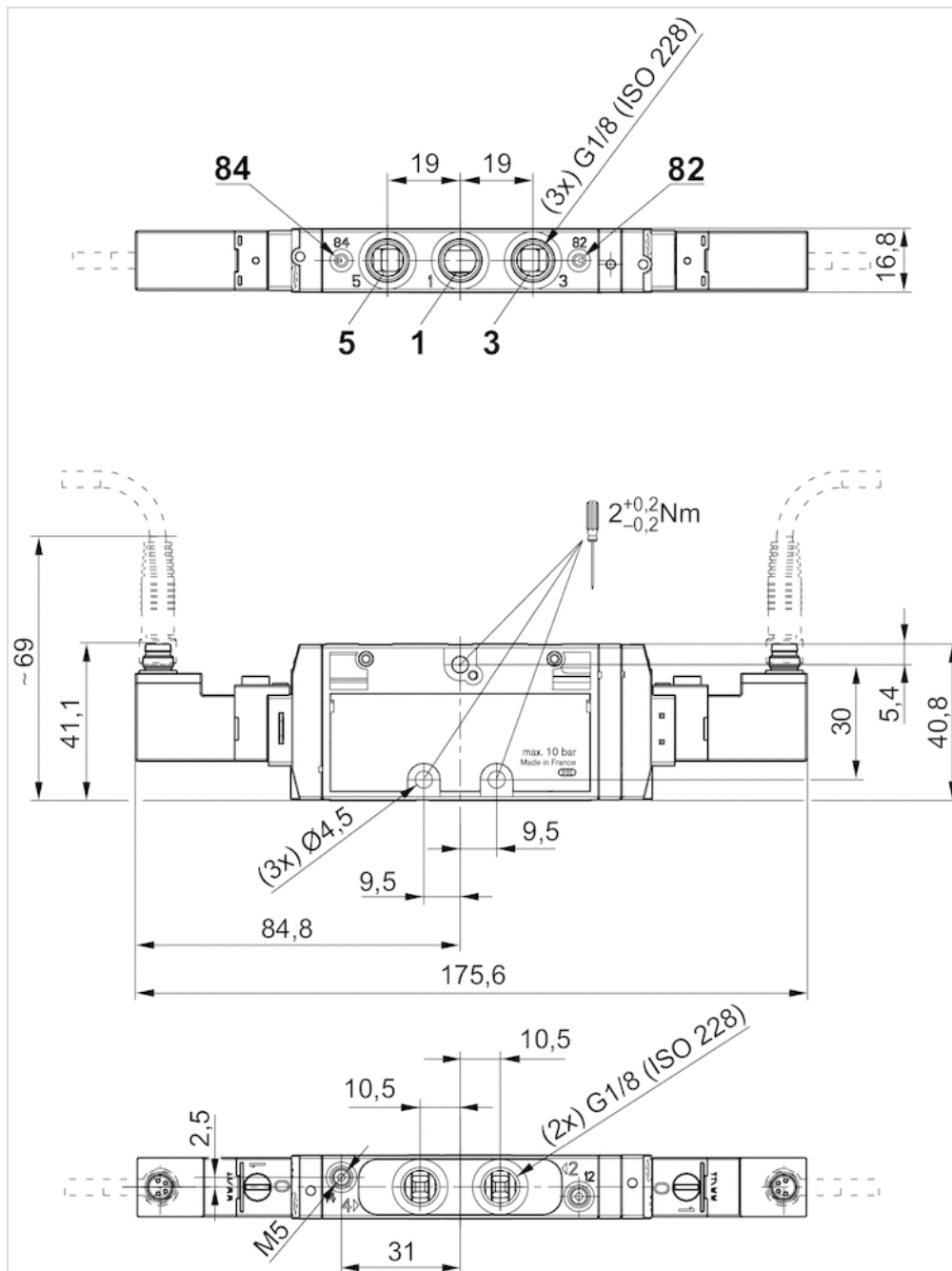
Use only the approved oils from AVENTICS. Further information can be found in the "Technical information" document (available in the MediaCentre).

Technical information

Material	
Housing	Polyamide, fiber-glass reinforced
Seals	Acrylonitrile butadiene rubber Polyurethane
Front plate	Polyamide, fiber-glass reinforced
Threaded bushing	Brass Die cast zinc, nickel-plated chrome-plated

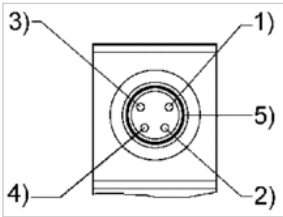
Dimensions

Dimensions



Pin assignments

PIN assignment and cable colors for valve plug connectors



PIN assignment: 1) PIN not assigned 2) PIN not assigned 3) 0 V4) 24 V5) LED
Cable colors 1) Brown 2) White 3) Blue 4) Black