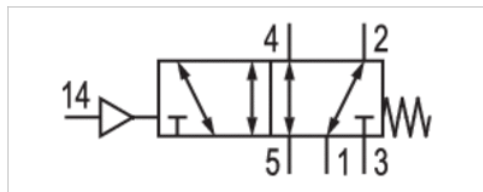


# 5/2-directional valve, Series CD04

- Qn = 900 l/min
- Compressed air connection output 1/8-27 NPTF
- Single air pilot
- Pipe connection



Version	Spool valve, positive overlapping
Activation	Pneumatically
Sealing principle	Soft sealing
Compressed air connection	according to ANSI B1.20.3
Flow rate value Qn	900 l/min
Working pressure min./max.	-0,95 ... 10 bar
Control pressure min./max.	3,5 ... 10 bar
Ambient temperature min./max.	-15 ... 65 °C
Medium temperature min./max.	-15 ... 65 °C
Medium	Compressed air
Max. particle size	50 µm
Oil content of compressed air	0 ... 1 mg/m <sup>3</sup>
Mounting on manifold strip	P-strip
Weight	0,31 kg

## Technical data

Part No.	Compressed air connection	Compressed air connection
	Input	Output
R412013299	1/8-27 NPTF	1/8-27 NPTF

Part No.	Compressed air connection	Compressed air connection
	Exhaust	Pilot control exhaust
R412013299	1/8-27 NPTF	1/8-27 NPTF

Nominal flow Qn at 6 bar and  $\Delta p = 1$  bar

## Technical information

The min. control pressure must be adhered to, since otherwise faulty switching and valve failure may result!  
 The pressure dew point must be at least 15 °C under ambient and medium temperature and may not exceed 3 °C .  
 The oil content of compressed air must remain constant during the life cycle.  
 Use only the approved oils from AVENTICS. Further information can be found in the "Technical information" document (available in the MediaCentre).

## Technical information

Material	
Housing	Die cast zinc Polyamide, fiber-glass reinforced
Seals	Acrylonitrile butadiene rubber

# Dimensions

## Dimensions in inches

