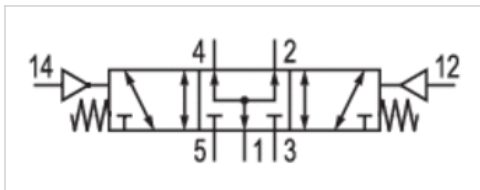


5/3-directional valve, Series CD07

- Qn 1►2 = 960 l/min
- Qn 2►3 = 900 l/min
- Compressed air connection output M14x1,5
- double air pilot
- Pipe connection
- suitable for ATEX



Version	Spool valve, positive overlapping
Activation	Pneumatically
Sealing principle	Soft sealing
Flow rate value Qn 1►2	960 l/min
Flow rate value Qn 2►3	900 l/min
Working pressure min./max.	-0,95 ... 10 bar
Control pressure min./max.	3 ... 10 bar
Ambient temperature min./max.	-25 ... 80 °C
Medium temperature min./max.	-25 ... 80 °C
Medium	Compressed air
Max. particle size	50 µm
Oil content of compressed air	0 ... 1 mg/m ³
Mounting on manifold strip	P-strip PRS strip
Weight	1,15 kg

Technical data

Part No.	Compressed air connection	
	Input	Output
R412008118	M14x1,5	M14x1,5

Part No.	Compressed air connection	
	Exhaust	Pilot control exhaust
R412008118	M14x1,5	M10x1

Nominal flow Qn at 6 bar and $\Delta p = 1$ bar

Technical information

The min. control pressure must be adhered to, since otherwise faulty switching and valve failure may result!

The pressure dew point must be at least 15 °C under ambient and medium temperature and may not exceed 3 °C .

The oil content of compressed air must remain constant during the life cycle.

Use only the approved oils from AVENTICS. Further information can be found in the "Technical information" document (available in the MediaCentre).

Technical information

Material	
Housing	Die cast zinc Polyamide, fiber-glass reinforced
Seals	Acrylonitrile butadiene rubber

Dimensions

Dimensions

