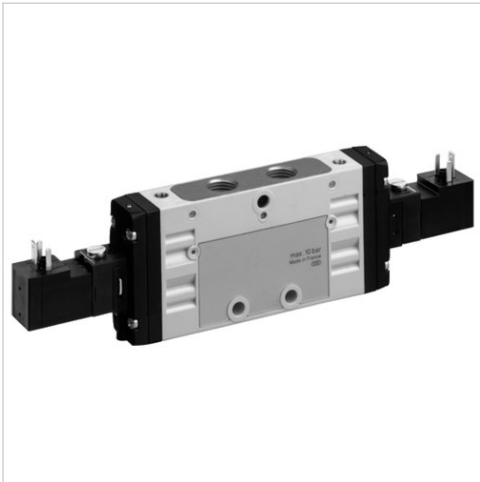





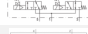







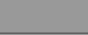
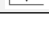
2x3/2-directional valve, Series TC15

- Operating voltage 24 V DC
- Qn = 1100 l/min
- Pilot valve width : 15 mm
- Pipe connection
- Compressed air connection output : 1/4 - 18 NPTF
- Electrical connection : Plug, ISO 15217, form C
- Manual override : with detent
- Double solenoid
- With spring return
- Pilot : internal external



Version	Spool valve, positive overlapping
Activation	Electrically
Sealing principle	Soft sealing
Working pressure min./max.	See table below
Control pressure min./max.	3 ... 10 bar
Ambient temperature min./max.	-10 ... 50 °C
Medium temperature min./max.	-10 ... 50 °C
Medium	Compressed air
Max. particle size	5 µm
Oil content of compressed air	0 ... 5 mg/m ³
Nominal flow Qn	1100 l/min
Compressed air connection	according to ANSI B1.20.3
Connector standard	ISO 15217
Protection class with connection	IP65
Duty cycle	100 %
Typ. switch-on time	12 ms
Typ. switch-off time	16 ms
Generic emission standard in accordance with	EN 50081-2:1993
Mounting on manifold strip	P-strip
Mounting screw tightening torque	2,5 Nm
Tightening torque tolerance	±0,2 mT
Weight	0,278 kg

Technical data

Part No.		NC/NC	MO	Compressed air connection	
				Input	
R422102236		NC/NC		1/4 - 18 NPTF	
R422102240		NO/NO		1/4 - 18 NPTF	
R422102244		NC/NO		1/4 - 18 NPTF	
R422102248		NC/NC		1/4 - 18 NPTF	
R422102252		NO/NO		1/4 - 18 NPTF	
R422102256		NC/NO		1/4 - 18 NPTF	

Part No.	Compressed air connection	
	Output	Exhaust
R422102236	1/4 - 18 NPTF	1/4 - 18 NPTF
R422102240	1/4 - 18 NPTF	1/4 - 18 NPTF
R422102244	1/4 - 18 NPTF	1/4 - 18 NPTF
R422102248	1/4 - 18 NPTF	1/4 - 18 NPTF
R422102252	1/4 - 18 NPTF	1/4 - 18 NPTF
R422102256	1/4 - 18 NPTF	1/4 - 18 NPTF

Part No.	Compressed air connection		Operational voltage	
	Pilot Input		DC	Voltage tolerance
R422102236	-		24 V	-10% / +10%
R422102240	-		24 V	-10% / +10%
R422102244	-		24 V	-10% / +10%
R422102248	M5		24 V	-10% / +10%
R422102252	M5		24 V	-10% / +10%
R422102256	M5		24 V	-10% / +10%

Part No.	Power consumption		Pilot	Flow conductance		Nominal resistance
	DC			b	C-value	
R422102236	2 W		internal	0,25	5,9 l/(s*bar)	185 Ω
R422102240	2 W		internal	0,25	5,9 l/(s*bar)	185 Ω
R422102244	2 W		internal	0,25	5,9 l/(s*bar)	185 Ω
R422102248	2 W		external	0,25	5,9 l/(s*bar)	185 Ω
R422102252	2 W		external	0,25	5,9 l/(s*bar)	185 Ω
R422102256	2 W		external	0,25	5,9 l/(s*bar)	185 Ω

Part No.	Working pressure min./max.
R422102236	3 ... 10 bar
R422102240	3 ... 10 bar
R422102244	3 ... 10 bar
R422102248	-0,95 ... 10 bar
R422102252	-0,95 ... 10 bar
R422102256	-0,95 ... 10 bar

Nominal flow Qn at 6 bar and Δp = 1 bar, MO = Manual override

Technical information

The min. control pressure must be adhered to, since otherwise faulty switching and valve failure may result!

The pressure dew point must be at least 15 °C under ambient and medium temperature and may not exceed 3 °C .

The oil content of compressed air must remain constant during the life cycle.

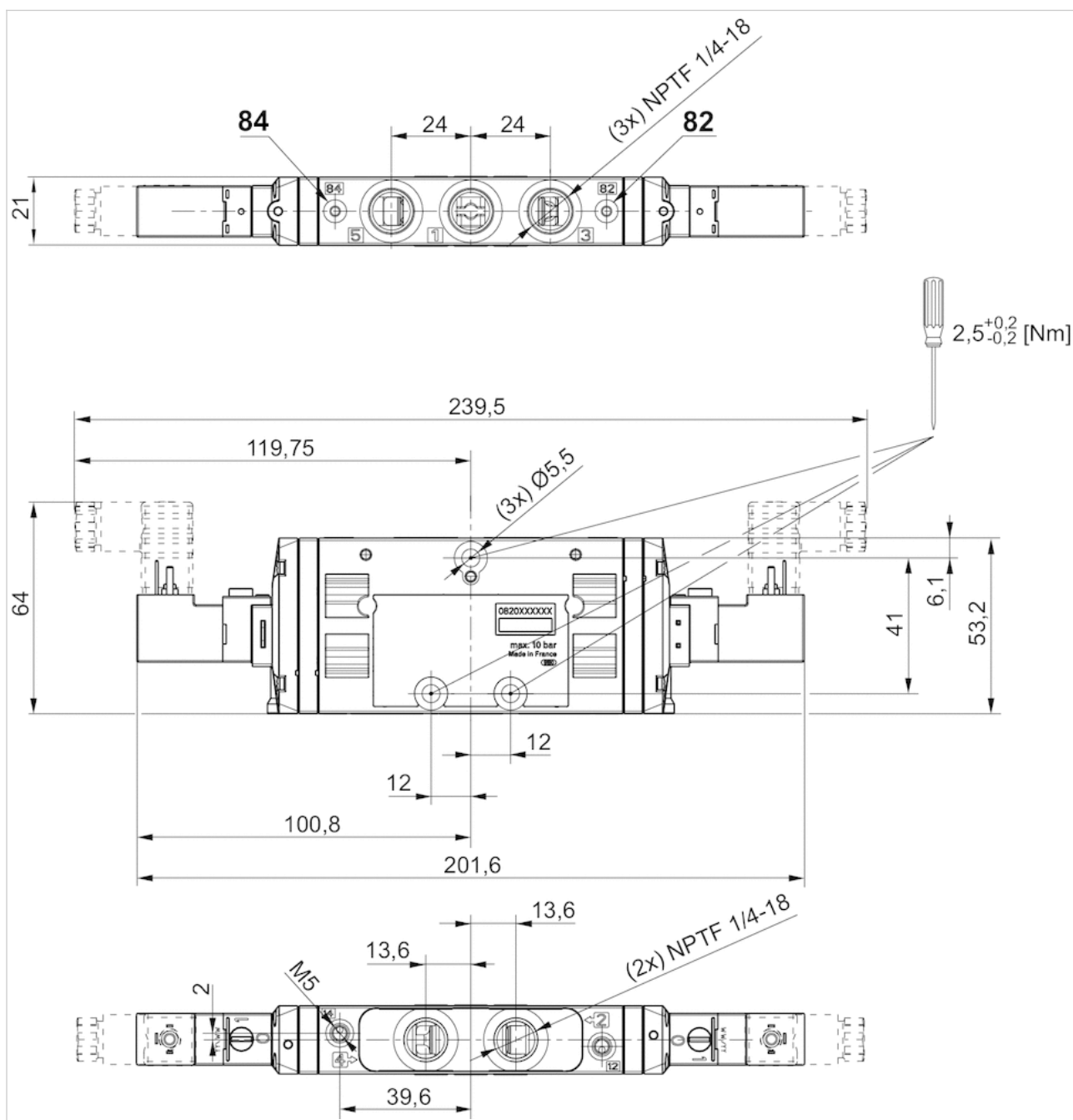
Use only the approved oils from AVENTICS. Further information can be found in the "Technical information" document (available in the MediaCentre).

Technical information

Material	
Housing	Polyamide, fiber-glass reinforced
Seals	Acrylonitrile butadiene rubber Hydrogenated nitrile butadiene rubber
Front plate	Polyamide, fiber-glass reinforced
Threaded bushing	Brass Die cast zinc, nickel-plated chrome-plated

Dimensions

Dimensions in mm



Dimensions in inches

