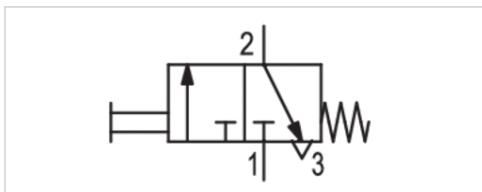


Series AP - inch

- Qn 1►2 = 250 l/min
- Qn 2►3 = 150 l/min
- Compressed air connection output 1/8-27 NPTF
- Pipe connection



Version	Poppet valve
Activation	Mechanical
Actuating element	panel installation
Switching principle	3/2
Working pressure min./max.	0 ... 10 bar
Ambient temperature min./max.	-30 ... 80 °C
Medium temperature min./max.	-30 ... 80 °C
Medium	Compressed air
Max. particle size	5 µm
Oil content of compressed air	0 ... 5 mg/m ³
Weight	0,09 kg



Technical data

Part No.	Compressed air connection	
	Input	Output
R450055453	1/8 NPT	1/8-27 NPTF

Part No.	Compressed air connection	Flow	Flow
	Exhaust	Qn 1 ► 2	Qn 2 ► 3
R450055453	1/8 NPT	250 l/min	150 l/min

Nominal flow Qn at 6 bar and $\Delta p = 1$ bar

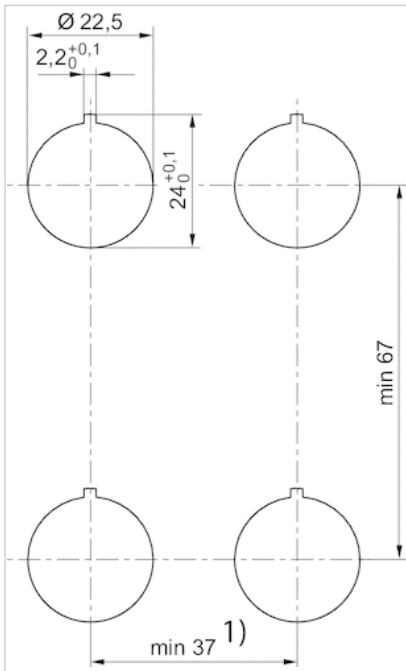
Please order control button separately., Cannot be combined with mushroom button with detent and rotary release R412012741

Technical information

Material	
Housing	Aluminum
Seals	Acrylonitrile butadiene rubber

Dimensions

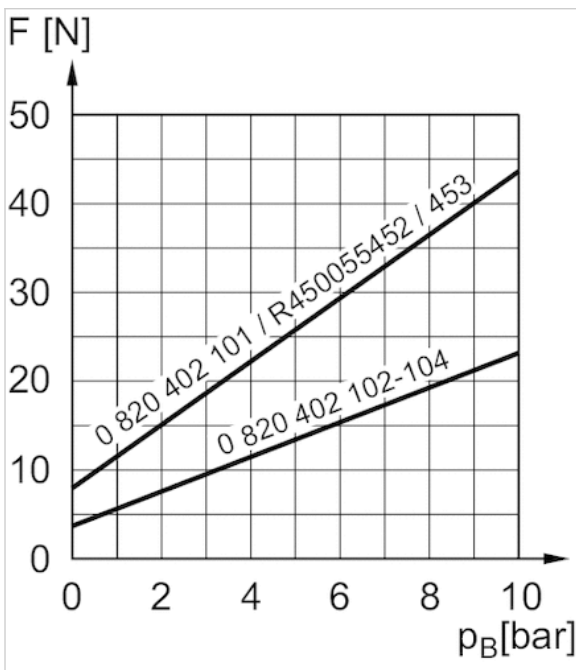
Dimensions cut-out in the front plate



1) For the mushroom buttons (R412012738, R412012739, R412012740) a minimum distance 41 mm must be ensured.

Diagrams

Actuating force+



F = actuating force
P = Working pressure