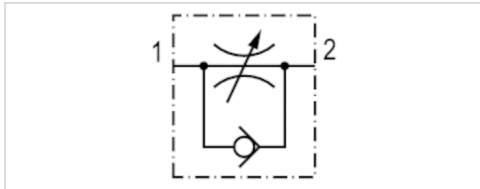


Check-choke valve, Series 344

- acid-proof

- Qn 2►1 = 280-16000 l/min



Working pressure min./max.

0 ... 16 bar

Ambient temperature min./max.

-20 ... 120 °C

Medium temperature min./max.

-20 ... 120 °C

Medium

Compressed air Oil

Weight

See table below

Technical data

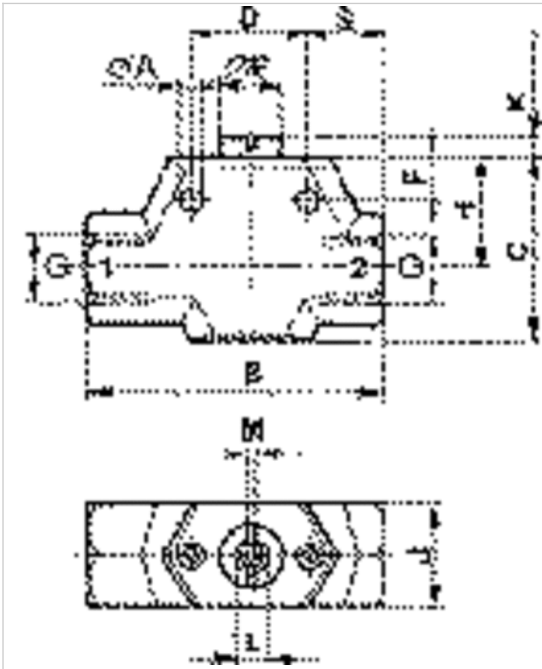
Part No.	Port 1	Flow	Flow conductance	Weight
		Qn 2►1	C-value	
2992344110	G 1/8	280 l/min	0,65 l/(s*bar)	0,13 kg
2992344120	G 1/4	1040 l/min	2,19 l/(s*bar)	0,22 kg
2992344125	G 3/8	1960 l/min	2,77 l/(s*bar)	0,55 kg
2992344130	G 1/2	5250 l/min	7,23 l/(s*bar)	1 kg
2992344140	G 3/4	11340 l/min	16,4 l/(s*bar)	2,2 kg
2992344150	G 1	16000 l/min	32,5 l/(s*bar)	3,6 kg

Technical information

Material	
Housing	Stainless steel, acid-proof
Seals	Fluorocaoutchouc

Dimensions

Dimensions



Dimensions

Part No.	B	C	D	E	F	ØA	H	J	K	L	M	S
2992344110	46	29	20	9	9	4.5	19	17	1.5	-	1.5	12
2992344120	61	38	20	9	11	5.5	23	20	3.5	-	1.5	15
2992344125	80	55	30	14	13.5	5.5	31	27	9	-	1.5	19
2992344130	104	65	40	18	16.5	6.5	39.5	34	4	10	-	24
2992344140	142	87	50	28	21.5	8.5	51.5	42	9	10	-	30
2992344150	167	103	60	34	26	8.5	62	52	10.5	10	-	32