

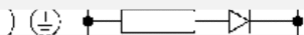
Valve plug connector, series CON-VP

- Socket, Form B, industry, 2+E, angled, 90°
- Industry standard
- unshielded
- with LED Yellow



| | |
|----------------------------------|---------------|
| Connection type | Screws |
| Ambient temperature min./max. | -25 ... 50 °C |
| Operationalvoltage | See table |
| Protection class | IP65 |
| Mounting screw tightening torque | 0,4 Nm |
| Weight | 0,02 kg |

Technical data



| Part No. | | Operationalvoltage | Max. current | Protective circuit | Contact assignment |
|------------|--|--------------------|--------------|--------------------|--------------------|
| 1834484051 | | 300 V DC | 10 A | - | 2+E |
| 1834484107 | | 24 V AC/DC | - | Z-diode | 2+E |
| 1834484108 | | 110 V AC | - | Varistor | 2+E |
| 1834484109 | | 230 V AC | - | Varistor | 2+E |

| Part No. | LED status display | suitable cable-Ø min./max | Seal | Fig. | |
|------------|--------------------|---------------------------|---------------------------------|--------|----|
| 1834484051 | - | 4 / 8 mm | caoutchouc/butadiene caoutchouc | Fig. 1 | 1) |
| 1834484107 | Yellow | 6 / 8 mm | Silicone caoutchouc | Fig. 2 | 2) |
| 1834484108 | Red | 6 / 8 mm | Silicone caoutchouc | Fig. 2 | 1) |
| 1834484109 | Red | 4 / 8 mm | Silicone caoutchouc | Fig. 2 | 2) |

Technical information

For security reasons, the valve plug connector must be plugged properly and centrally.
The specified protection class is only valid in assembled and tested state.

Technical information

| Material | |
|----------|---|
| Seals | caoutchouc/butadiene caoutchouc Silicone caoutchouc |

Dimensions

Fig. 1

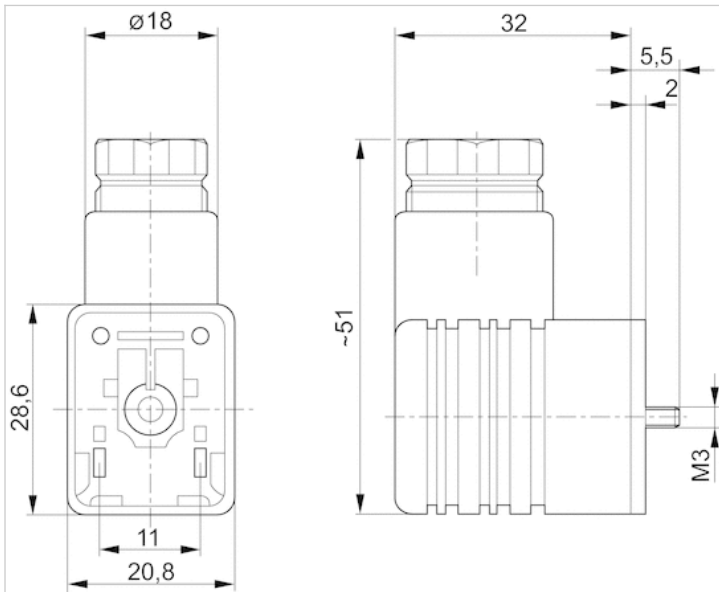


Fig. 2

