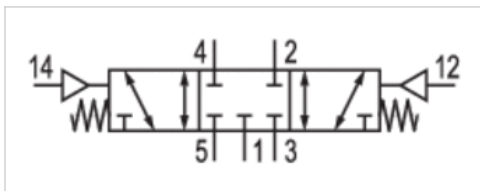





5/3-directional valve, Series IS12, size 2

- Qn = 2400 l/min
- Plate connection
- Compressed air connection output Base plate ISO 5599-1



Version	Spool valve, positive overlapping
Pilot	external
Blocking principle	Single base plate principle
Sealing principle	Soft sealing
Connection type	Plate connection
Standards	ISO 5599-1, ISO 2
Compressed air connection	Base plate ISO 5599-1
version pneumatic port	Base plate ISO 5599-1
Working pressure min./max.	-0,9 ... 10 bar
Control pressure min./max.	2,8 ... 10 bar
Ambient temperature min./max.	0 ... 80 °C
Medium temperature min./max.	0 ... 80 °C
Medium	Compressed air Class 5-4-4 class 6-4-3
Max. particle size	5 µm
Oil content of compressed air	0 ... 5 mg/m ³
Mounting screw	M6 with hexagon socket
Mounting screw tightening torque	4 Nm
Weight	0,51 kg

Technical data

Part No.			version pneumatic port	Flow
				Qn
0820228101		closed center	Base plate ISO 5599-1	2400 l/min
0820228102		exhausted center	Base plate ISO 5599-1	1700 l/min
0820228103		pressurized center	Base plate ISO 5599-1	1800 l/min

Technical information

The min. control pressure must be adhered to, since otherwise faulty switching and valve failure may result!

The pressure dew point must be at least 15 °C under ambient and medium temperature and may not exceed 3 °C .

The oil content of compressed air must remain constant during the life cycle.

Use only the approved oils from AVENTICS. Further information can be found in the "Technical information" document (available in the MediaCentre).

Technical information

Housing	Polyamide
Seals	Acrylonitrile butadiene rubber
Front plate	Polyamide

Dimensions

Dimensions

