

Series NU2

- Swivel banjo connection 1-fold
- External thread
- G 1/8
- plug-in with tube nut
- Ø 4
- NU2-S-RW1



Working pressure min./max.	-0,95 ... 10 bar
Ambient temperature min./max.	-10 ... 60 °C
Weight	See table

Technical data

Part No.	Port G	Port D	Delivery unit	Weight
1823391293	G 1/8	Ø 4	2 piece	0,023 kg
1823391294	G 1/4	Ø 6	2 piece	0,034 kg
1823391295	G 1/4	Ø 8	2 piece	0,044 kg
R412010658	G 1/4	Ø 9	1 piece	0,276 kg
1823391296	G 3/8	Ø 8	2 piece	0,056 kg
R412007839	G 3/8	Ø 13	2 piece	0,079 kg
R412007838	G 1/2	Ø 13	2 piece	0,098 kg
1823391807	G 3/4	Ø 18	1 piece	0,208 kg
1823391808	G 1	Ø 18	1 piece	0,276 kg

Technical information

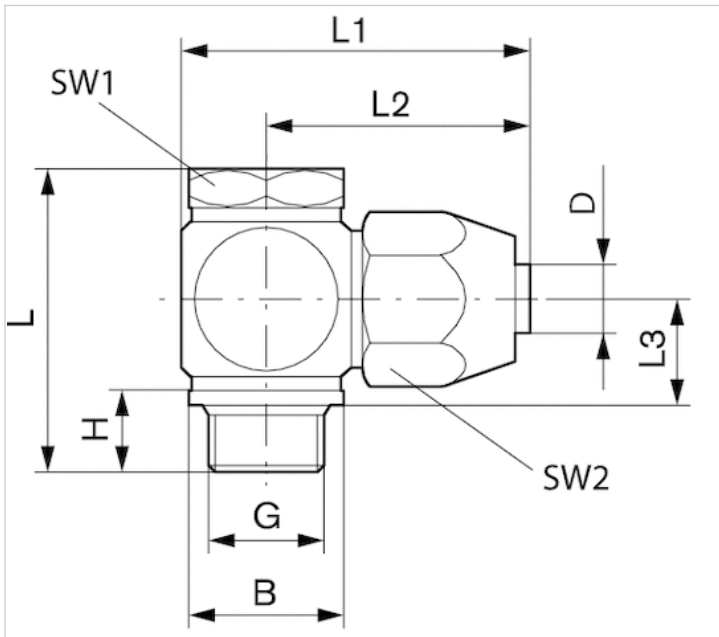
For further information about assembling and tolerances of adaptable tubing can be found in the "Technical information" document (available in the MediaCentre).

Technical information

Material	
Housing	Aluminum, anodized
Seal	Polyvinyl chloride

Dimensions

Dimensions



for fabric-reinforced plastic tubing

Dimensions

Part No.	Port D	Port G	B	H	L	L1	L2	L3	SW1	SW2
1823391293	Ø 4	G 1/8	14	10	32.5	34	26.5	13.7	14	17
1823391294	Ø 6	G 1/4	18	12.5	39	39.5	30	14.5	17	19
1823391295	Ø 8	G 1/4	18	12.5	42	42	32.5	16	17	22
R412010658	Ø 9	G 1/4	18.9	7.9	40	42	32.5	15.6	17	24
1823391296	Ø 8	G 3/8	21	12.5	43	47	35	15.5	22	22
R412007839	Ø 13	G 3/8	22.9	12.5	47	49	37	18.5	22	30
R412007838	Ø 13	G 1/2	22.9	14	49.5	55	40	18.5	27	30
1823391807	Ø 18	G 3/4	33	18.5	66	69	51	25	32	41
1823391808	Ø 18	G 1	40	20.5	70	77	55	25	41	41

Connection D = inside diameter of the tubing to be used