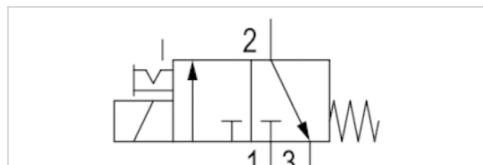


# 3/2-directional valve, Series DO22

- Plate valve with pipe connection
- Electrical connection : Plug, ISO 6952, form B
- Manual override : with detent
- With spring return



Version	Poppet valve
Activation	Electrically
Sealing principle	Soft sealing
Working pressure min./max.	See table
Ambient temperature min./max.	-10 ... 50 °C
Medium temperature min./max.	-10 ... 50 °C
Medium	Compressed air
Max. particle size	5 µm
Oil content of compressed air	0 ... 5 mg/m <sup>3</sup>
Nominal flow 1 ► 2	See table
Nominal flow 2 ► 3	See table
Protection class with connection	IP65
Compatibility index	See table
Duty cycle	100 %
mounting screws	M3
Weight	See table

## Technical data

Part No.		MO	Compressed air connection	
			Input	Exhaust
0820019641			-	M5
0820019644			-	M5
0820019642			-	M5
0820019640			-	M5
0820019968			-	M5
0820019691			M5	-
0820019961			M5	-
0820019631		-	-	M5
0820019633		-	-	M5
0820019967		-	-	M5
0820019681		-	M5	-
0820019616			-	M5
0820019965			-	M5

Part No.	Operationalvoltage		Operationalvoltage		Operationalvoltage		Voltage tolerance	
	DC	AC 50 Hz	AC 50 Hz	AC 60 Hz	AC 60 Hz	DC	DC	
0820019641	24 V	-	-	-	-	-10% / +10%	-	
0820019644	24 V	-	-	-	-	-10% / +10%	-	
0820019642	-	24 V	-	-	-	-	-	
0820019640	-	230 V	-	-	-	-	-	
0820019968	-	-	-	-	-	-	-	
0820019691	24 V	-	-	-	-	-10% / +10%	-	

Part No.	Operationalvoltage	Operationalvoltage	Operationalvoltage	Voltage tolerance
	DC	AC 50 Hz	AC 60 Hz	DC
0820019961	-	-	-	-
0820019631	24 V	-	-	-10% / +10%
0820019633	-	-	110 V	-
0820019967	-	-	-	-
0820019681	24 V	-	-	-10% / +10%
0820019616	24 V	-	-	-10% / +10%
0820019965	-	-	-	-

Part No.	Voltage tolerance	Voltage tolerance	Power consumption	Holding power
	AC 50 Hz	AC 60 Hz	DC	AC 50 Hz
0820019641	-	-	4,8 W	-
0820019644	-	-	2,6 W	-
0820019642	-10% / +10%	-	-	8,5 VA
0820019640	-10% / +10%	-	-	9,7 VA
0820019968	-	-	-	-
0820019691	-	-	4,8 W	-
0820019961	-	-	-	-
0820019631	-	-	4,8 W	-
0820019633	-	-10% / +10%	-	-
0820019967	-	-	-	-
0820019681	-	-	4,8 W	-
0820019616	-	-	4,8 W	-
0820019965	-	-	-	-

Part No.	Holding power	Switch-on power	Switch-on power	Nominal flow 1 ▶ 2	Nominal flow 2 ▶ 3
	AC 60 Hz	AC 50 Hz	AC 60 Hz		
0820019641	-	-	-	61 l/min	74 l/min
0820019644	-	-	-	61 l/min	74 l/min
0820019642	7,3 VA	12 VA	9,9 VA	61 l/min	74 l/min
0820019640	-	12,6 VA	-	61 l/min	74 l/min
0820019968	-	-	-	61 l/min	74 l/min
0820019691	-	-	-	61 l/min	74 l/min
0820019961	-	-	-	61 l/min	74 l/min
0820019631	-	-	-	61 l/min	74 l/min
0820019633	6,9 VA	-	9,4 VA	61 l/min	74 l/min
0820019967	-	-	-	61 l/min	74 l/min
0820019681	-	-	-	61 l/min	74 l/min
0820019616	-	-	-	75 l/min	77 l/min
0820019965	-	-	-	75 l/min	77 l/min

Part No.	Working pressure min./max.	Compatibility index	basic valve with electrical connector
0820019641	0 ... 10 bar	14	-
0820019644	0 ... 7 bar	13	-
0820019642	0 ... 10 bar	14	-
0820019640	0 ... 10 bar	14	-
0820019968	0 ... 10 bar	14	Basic valve without coil
0820019691	0 ... 10 bar	14	-
0820019961	0 ... 10 bar	14	Basic valve without coil



Part No.	Working pressure min./max.	Compatibility index	basic valve with electrical connector
0820019631	0 ... 10 bar	14	-
0820019633	0 ... 10 bar	14	-
0820019967	0 ... 10 bar	14	Basic valve without coil
0820019681	0 ... 10 bar	14	-
0820019616	0 ... 7 bar	14	-
0820019965	0 ... 7 bar	14	Basic valve without coil

## Technical information

The min. control pressure must be adhered to, since otherwise faulty switching and valve failure may result!  
 The pressure dew point must be at least 15 °C under ambient and medium temperature and may not exceed 3 °C .  
 The oil content of compressed air must remain constant during the life cycle.  
 Use only the approved oils from AVENTICS. Further information can be found in the "Technical information" document (available in the MediaCentre).

## Technical information

Material	
Housing	Plastic
Seals	Fluorocaoutchouc

# Dimensions

## Dimensions

