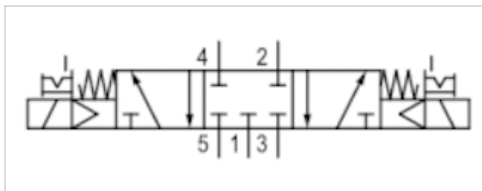


5/3-directional valve, Series WV02

- Qn = 400 l/min
- Pilot valve width : 15 mm
- closed center
- Pipe connection
- Compressed air connection output : G 1/8
- Electrical connection : Plug, ISO 15217, form C
- Manual override : with detent
- Pilot : internal



Version	Spool valve, positive overlapping
Activation	Electrically
Pilot	internal
Sealing principle	Soft sealing
Working pressure min./max.	2,2 ... 10 bar
Control pressure min./max.	2,2 ... 10 bar
Ambient temperature min./max.	0 ... 50 °C
Medium temperature min./max.	0 ... 60 °C
Medium	Compressed air
Max. particle size	0,5 µm
Oil content of compressed air	0 ... 25 mg/m ³
Nominal flow Qn	See table
Connector standard	ISO 15217
Protection class with connection	IP65
Duty cycle	100 %
Mounting on manifold strip	PRS strip
mounting screws	M3
Weight	0,17 kg

Technical data

Part No.		MO	Compressed air connection	
			Input	Output
0820039118			G 1/8	G 1/8
0820039116			G 1/8	G 1/8
0820039117			G 1/8	G 1/8
0820039119			G 1/8	G 1/8
0820039115			G 1/8	G 1/8
0820039133			G 1/8	G 1/8
0820039131			G 1/8	G 1/8
0820039132			G 1/8	G 1/8
0820039134			G 1/8	G 1/8
0820039130			G 1/8	G 1/8
0820039163			G 1/8	G 1/8
0820039161			G 1/8	G 1/8
0820039162			G 1/8	G 1/8
0820039164			G 1/8	G 1/8
0820039160			G 1/8	G 1/8

Part No.	Operationalvoltage	Operationalvoltage	Operationalvoltage	Voltage tolerance
	DC	AC 50 Hz	AC 60 Hz	DC
0820039118	-	24 V	24 V	-
0820039116	24 V	-	-	-10% / +10%
0820039117	24 V	-	-	-10% / +10%
0820039119	-	110 V	110 V	-
0820039115	-	230 V	230 V	-
0820039133	-	24 V	24 V	-
0820039131	24 V	-	-	-10% / +10%
0820039132	24 V	-	-	-10% / +10%
0820039134	-	110 V	110 V	-
0820039130	-	230 V	230 V	-
0820039163	-	24 V	24 V	-
0820039161	24 V	-	-	-10% / +10%
0820039162	24 V	-	-	-10% / +10%
0820039164	-	110 V	110 V	-
0820039160	-	230 V	230 V	-

Part No.	Voltage tolerance	Voltage tolerance	Power consumption	Holding power
	AC 50 Hz	AC 60 Hz	DC	AC 50 Hz
0820039118	-10% / +10%	-10% / +10%	-	1,6 VA
0820039116	-	-	2 W	-
0820039117	-	-	1 W	-
0820039119	-10% / +10%	-10% / +10%	-	1,6 VA
0820039115	-10% / +10%	-10% / +10%	-	1,6 VA
0820039133	-10% / +10%	-10% / +10%	-	1,6 VA
0820039131	-	-	2 W	-
0820039132	-	-	1 W	-
0820039134	-10% / +10%	-10% / +10%	-	1,6 VA
0820039130	-10% / +10%	-10% / +10%	-	1,6 VA
0820039163	-10% / +10%	-10% / +10%	-	1,6 VA
0820039161	-	-	2 W	-
0820039162	-	-	1 W	-
0820039164	-10% / +10%	-10% / +10%	-	1,6 VA
0820039160	-10% / +10%	-10% / +10%	-	1,6 VA

Part No.	Holding power	Switch-on power	Switch-on power	Nominal flow Qn	Typ. switch-on time
	AC 60 Hz	AC 50 Hz	AC 60 Hz		
0820039118	1,4 VA	2,2 VA	2 VA	400 l/min	9 ms
0820039116	-	-	-	400 l/min	9 ms
0820039117	-	-	-	400 l/min	11 ms
0820039119	1,4 VA	2,2 VA	2 VA	400 l/min	9 ms
0820039115	1,4 VA	2,2 VA	2 VA	400 l/min	9 ms
0820039133	1,4 VA	2,2 VA	2 VA	250 l/min	9 ms
0820039131	-	-	-	250 l/min	9 ms
0820039132	-	-	-	250 l/min	11 ms
0820039134	1,4 VA	2,2 VA	2 VA	250 l/min	9 ms
0820039130	1,4 VA	2,2 VA	2 VA	250 l/min	9 ms
0820039163	1,4 VA	2,2 VA	2 VA	250 l/min	9 ms
0820039161	-	-	-	250 l/min	9 ms
0820039162	-	-	-	250 l/min	11 ms

Part No.	Holding power	Switch-on power	Switch-on power	Nominal flow Qn	Typ. switch-on time
	AC 60 Hz	AC 50 Hz	AC 60 Hz		
0820039164	1,4 VA	2,2 VA	2 VA	250 l/min	9 ms
0820039160	1,4 VA	2,2 VA	2 VA	250 l/min	9 ms

Part No.	Typ. switch-off time	
0820039118	20 ms	-
0820039116	20 ms	-
0820039117	23 ms	1)
0820039119	20 ms	-
0820039115	20 ms	-
0820039133	20 ms	-
0820039131	20 ms	-
0820039132	23 ms	1)
0820039134	20 ms	-
0820039130	20 ms	-
0820039163	20 ms	-
0820039161	20 ms	-
0820039162	23 ms	1)
0820039164	20 ms	-
0820039160	20 ms	-

Technical information

The min. control pressure must be adhered to, since otherwise faulty switching and valve failure may result!

The pressure dew point must be at least 15 °C under ambient and medium temperature and may not exceed 3 °C .

The oil content of compressed air must remain constant during the life cycle.

Use only the approved oils from AVENTICS. Further information can be found in the "Technical information" document (available in the MediaCentre).

Technical information

Material	
Housing	Aluminum
Seals	Acrylonitrile butadiene rubber
Front plate	Polyamide
Threaded bushing	Aluminum

Dimensions

Dimensions

