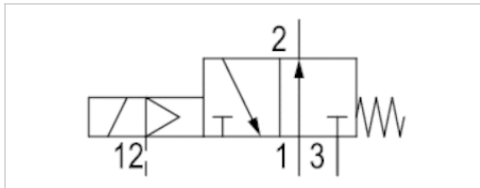


3/2-directional valve, Series 579

- external
- $Q_n = 520$ l/min
- Pipe connection
- Compressed air connection output $\text{Ø}6 \times 1$
- Electrical connection Plug, ISO 15217, form C



Version	Poppet valve
Activation	Electrically
Pilot	external
Sealing principle	Soft sealing
Working pressure min./max.	0,5 ... 8 bar
Control pressure min./max.	2 ... 8 bar
Ambient temperature min./max.	-15 ... 50 °C
Medium temperature min./max.	-15 ... 50 °C
Medium	Compressed air
Max. particle size	5 μm
Oil content of compressed air	0 ... 1 mg/m ³
Nominal flow Q_n	See table
Protection class with connection	IP65
Reverse polarity protection	Protected against polarity reversal
Duty cycle	100 %
Typ. switch-on time	18 ms
Typ. switch-off time	16 ms
Weight	0,093 kg

Technical data

Part No.		Type	Compressed air connection	
			Input	Output
5794420210	NO	single valve	$\text{Ø}6 \times 1$	$\text{Ø}6 \times 1$
5794420220	NO	single valve	$\text{Ø}6 \times 1$	$\text{Ø}6 \times 1$
5794420620	NO	single valve	$\text{Ø}6 \times 1$	$\text{Ø}6 \times 1$
5794425220	NO	single valve	$\text{Ø}6 \times 1$	$\text{Ø}6 \times 1$
5794425270	NO	single valve	$\text{Ø}6 \times 1$	$\text{Ø}6 \times 1$
5794425280	NO	single valve	$\text{Ø}6 \times 1$	$\text{Ø}6 \times 1$
5794425680	NO	single valve	$\text{Ø}6 \times 1$	$\text{Ø}6 \times 1$
5794620210	NO	single valve	$\text{Ø} 8 \times 1$	$\text{Ø} 8 \times 1$
5794620220	NO	single valve	$\text{Ø} 8 \times 1$	$\text{Ø} 8 \times 1$
5794620620	NO	single valve	$\text{Ø} 8 \times 1$	$\text{Ø} 8 \times 1$
5794625220	NO	single valve	$\text{Ø} 8 \times 1$	$\text{Ø} 8 \times 1$
5794625270	NO	single valve	$\text{Ø} 8 \times 1$	$\text{Ø} 8 \times 1$
5794625280	NO	single valve	$\text{Ø} 8 \times 1$	$\text{Ø} 8 \times 1$
5794625680	NO	single valve	$\text{Ø} 8 \times 1$	$\text{Ø} 8 \times 1$

Part No.	Compressed air connection		Operational voltage	
	Pilot connection		DC	AC 50 Hz
5794420210	$\text{Ø} 4$		12 V	-
5794420220	$\text{Ø} 4$		24 V	-

Part No.	Compressed air connection		Operationalvoltage	
	Pilot connection		DC	AC 50 Hz
5794420620	Ø 4		24 V	-
5794425220	Ø 4		-	24 V
5794425270	Ø 4		-	110 V
5794425280	Ø 4		-	230 V
5794425680	Ø 4		-	230 V
5794620210	Ø 4		12 V	-
5794620220	Ø 4		24 V	-
5794620620	Ø 4		24 V	-
5794625220	Ø 4		-	24 V
5794625270	Ø 4		-	110 V
5794625280	Ø 4		-	230 V
5794625680	Ø 4		-	230 V

Part No.	Operationalvoltage		Power consumption		Holding power	
	AC 60 Hz	DC	AC 50 Hz	AC 60 Hz	DC	AC 60 Hz
5794420210	-	1,6 W	-	-	-	-
5794420220	-	1,6 W	-	-	-	-
5794420620	-	1,7 W	-	-	-	-
5794425220	24 V	-	2,2 VA	1,8 VA	-	-
5794425270	110 V	-	3 VA	2,4 VA	-	-
5794425280	230 V	-	2,3 VA	2 VA	-	-
5794425680	230 V	-	2,5 VA	2,2 VA	-	-
5794620210	-	1,6 W	-	-	-	-
5794620220	-	1,6 W	-	-	-	-
5794620620	-	1,7 W	-	-	-	-
5794625220	24 V	-	2,2 VA	1,8 VA	-	-
5794625270	110 V	-	3 VA	2,4 VA	-	-
5794625280	230 V	-	2,3 VA	2 VA	-	-
5794625680	230 V	-	2,5 VA	2,2 VA	-	-

Part No.	Switch-on power		Pilot	Flow		LED
	AC 50 Hz	AC 60 Hz		Qn		
5794420210	-	-	external	520 l/min	-	-
5794420220	-	-	external	520 l/min	-	-
5794420620	-	-	external	520 l/min	-	Red
5794425220	3 VA	2,6 VA	external	520 l/min	-	-
5794425270	4,2 VA	3,4 VA	external	520 l/min	-	-
5794425280	3,2 VA	2,8 VA	external	520 l/min	-	-
5794425680	3,4 VA	3 VA	external	520 l/min	-	Red
5794620210	-	-	external	600 l/min	-	-
5794620220	-	-	external	600 l/min	-	-
5794620620	-	-	external	600 l/min	-	Red
5794625220	3 VA	2,6 VA	external	600 l/min	-	-
5794625270	4,2 VA	3,4 VA	external	600 l/min	-	-
5794625280	3,2 VA	2,8 VA	external	600 l/min	-	-
5794625680	3,4 VA	3 VA	external	600 l/min	-	Red

Part No.	Protected against polarity reversal	
5794420210	Protected against polarity reversal	-
5794420220	Protected against polarity reversal	-
5794420620	Protected against polarity reversal	1)
5794425220	Protected against polarity reversal	-
5794425270	Protected against polarity reversal	-
5794425280	Protected against polarity reversal	-
5794425680	Protected against polarity reversal	-
5794620210	Protected against polarity reversal	-
5794620220	Protected against polarity reversal	-
5794620620	Protected against polarity reversal	1)
5794625220	Protected against polarity reversal	-
5794625270	Protected against polarity reversal	-
5794625280	Protected against polarity reversal	-
5794625680	Protected against polarity reversal	-

Technical information

The min. control pressure must be adhered to, since otherwise faulty switching and valve failure may result!

The pressure dew point must be at least 15 °C under ambient and medium temperature and may not exceed 3 °C .

The oil content of compressed air must remain constant during the life cycle.

Use only the approved oils from AVENTICS. Further information can be found in the "Technical information" document (available in the MediaCentre).

At an ambient temperature of 40 °C the max. working pressure is 10 bar .

Versions with voltage of less than 50 V DC do not have a protective ground.

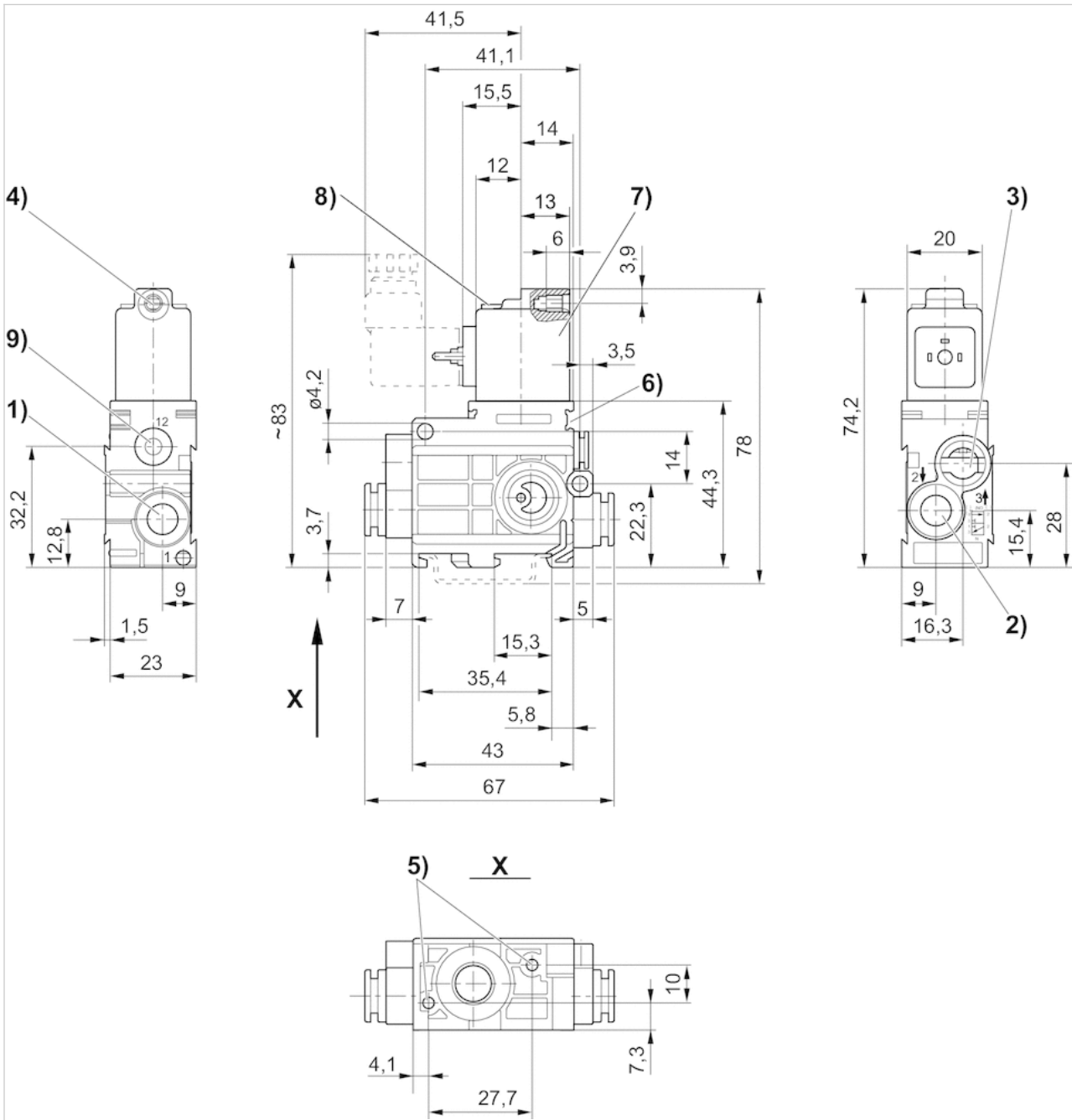
The control pressure must be at least as high as the working pressure.

Technical information

Material	
Housing	Polyamide
Seals	Acrylonitrile butadiene rubber Polyurethane

Dimensions

Dimensions



1) Port 12) Port 23) Port 3, exhaust air must not be throttled4) Core Ø for M55) Pocket hole 6 mm deep for 3.5 self-tapping screw6) Mounting space for name plate7) Coil can be rotated at 180° intervals8) LED9) Port 12