

# Pressure gauge

- Back port
- Background color White
- Scale color Black, Red
- Units bar
- Units psi



Ambient temperature min./max.

-15 ... 80 °C

Medium

Compressed air

Max. particle size

50 µm

Main scale unit (outside)

bar

Main scale color (outside)

Black

Secondary scale unit (inside)

psi

Secondary scale color (inside)

Red

Background color

White

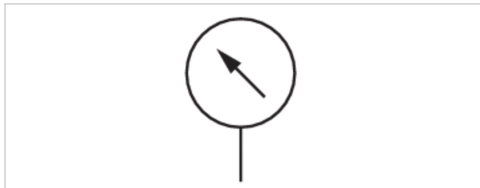
Pointer color

Black

Weight

See table below

The delivered product may vary from that in the illustration.



## Technical data

Part No.	Compressed air connection	Nominal diameter	Range of application	Display range	Operating pressure	Scale value
R412003960	Ø 6	28 mm	0 ... 4	0 bar ... 4	0 ... 4 bar	-
3530200300	Ø 6	28 mm	0 ... 10	0 bar ... 10 bar	0 ... 10 bar	-
R412004883	Ø 6	28 mm	0 ... 10	0 bar ... 10 bar	0 ... 10 bar	1

Part No.	Weight
R412003960	0,016 kg
3530200300	0,016 kg
R412004883	0,02 kg

Included in the delivery contents: Straight push-in fitting, increasing (1823391628)

## Technical information

Material	
Housing	Polyamide

## Dimensions

### Dimensions in mm

