

Straight fitting, self-sealing



Weight

See table

Technical data

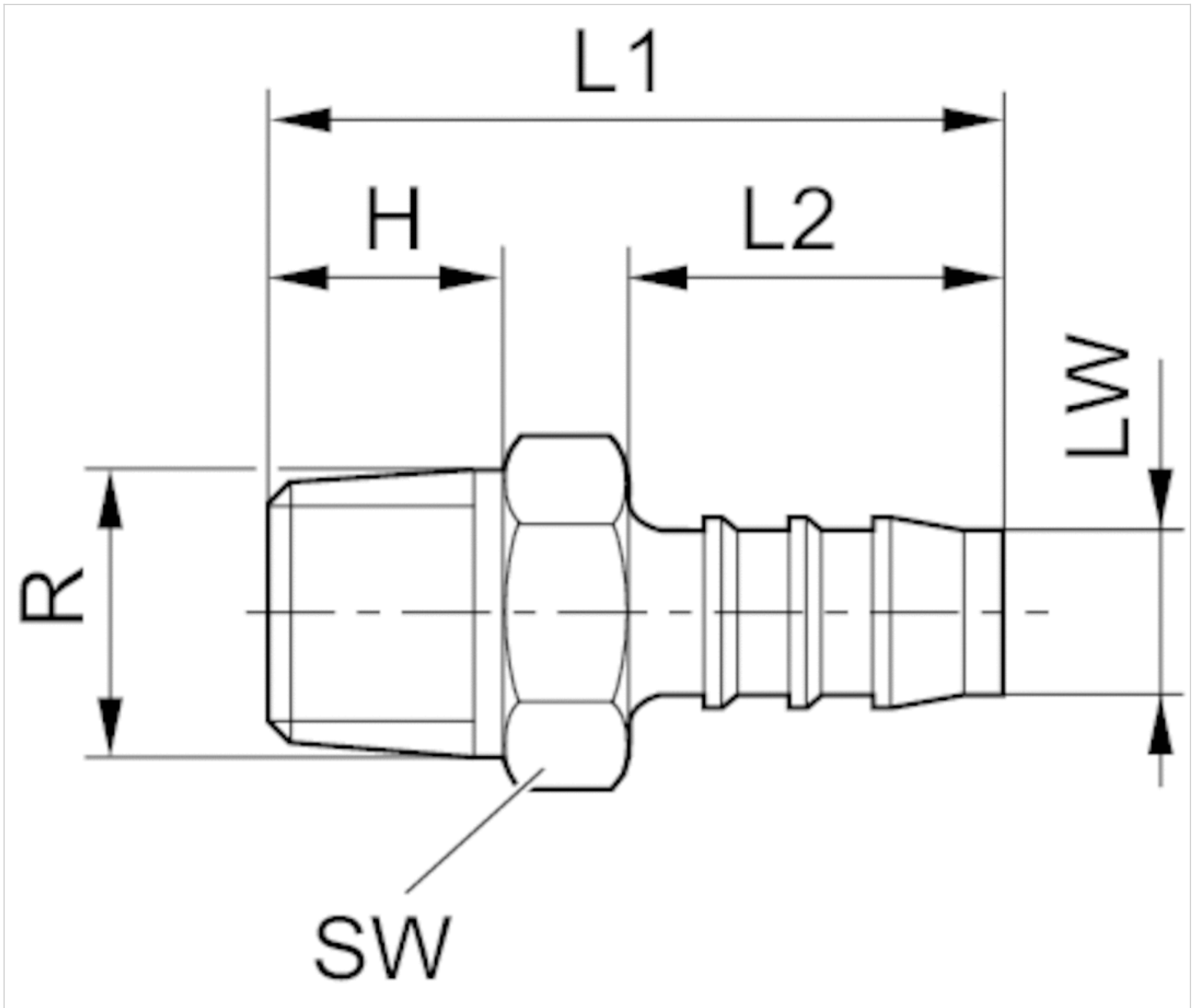
Part No.	Port R	Clearance (LW)	Delivery unit	Weight
1823386043	R 1/8	4 mm	25 piece	0,001 kg
1823386044	R 1/8	6 mm	25 piece	0,002 kg
1823386045	R 1/4	6 mm	25 piece	0,003 kg
8931290054	R 1/4	4 mm	10 piece	0,002 kg
1823386000	R 1/4	8 mm	25 piece	0,003 kg
1823386055	R 1/4	10 mm	25 piece	0,003 kg
1823386054	R 3/8	6 mm	10 piece	0,004 kg
1823386001	R 3/8	8 mm	10 piece	0,004 kg
1823386056	R 3/8	10 mm	10 piece	0,005 kg
1823386003	R 3/8	12 mm	10 piece	0,005 kg
1823386002	R 1/2	8 mm	10 piece	0,009 kg
1823386004	R 1/2	13 mm	10 piece	0,01 kg

Technical information

Material

Material	Polyamide
----------	-----------

Dimensions



Dimensions

Part No.	Port R	LW	H	L1	L2	SW
1823386043	R 1/8	4 mm	8	27	15	10
1823386044	R 1/8	6 mm	8	33	20	10
1823386045	R 1/4	6 mm	12	38	20	14
8931290054	R 1/4	4 mm	12	39	23	14
1823386000	R 1/4	8 mm	12	41	23	14
1823386055	R 1/4	10 mm	12	43	25	14
1823386054	R 3/8	6 mm	12	39	20	17
1823386001	R 3/8	8 mm	12	44	23	17
1823386056	R 3/8	10 mm	12	43	25	17
1823386003	R 3/8	12 mm	12	48	28	17

UK Office
 5 Caulside Drive
 Antrim
 BT41 2DU
 United Kingdom
 +44 (0) 28 9448 1808

European Office
 Unit 6, Saint Anthony's Business Park
 Dublin
 D22 VW95
 Ireland
 +353 (0) 1 4373653



Part No.	Port R	LW	H	L1	L2	SW
1823386002	R 1/2	8 mm	17	49	23	22
1823386004	R 1/2	13 mm	17	54	28	22