



# Straight fitting, self-sealing



Weight

See table below

## Technical data

Part No.	Port	Clearance (LW)	Delivery unit	Weight
1823386043	R 1/8	4 mm	25 piece	0,001 kg
1823386044	R 1/8	6 mm	25 piece	0,002 kg
1823386045	R 1/4	6 mm	25 piece	0,003 kg
8931290054	R 1/4	4 mm	10 piece	0,002 kg
1823386000	R 1/4	8 mm	25 piece	0,003 kg
1823386055	R 1/4	10 mm	25 piece	0,003 kg
1823386054	R 3/8	6 mm	10 piece	0,004 kg
1823386001	R 3/8	8 mm	10 piece	0,004 kg
1823386056	R 3/8	10 mm	10 piece	0,005 kg
1823386003	R 3/8	12 mm	10 piece	0,005 kg
1823386002	R 1/2	8 mm	10 piece	0,009 kg
1823386004	R 1/2	13 mm	10 piece	0,01 kg

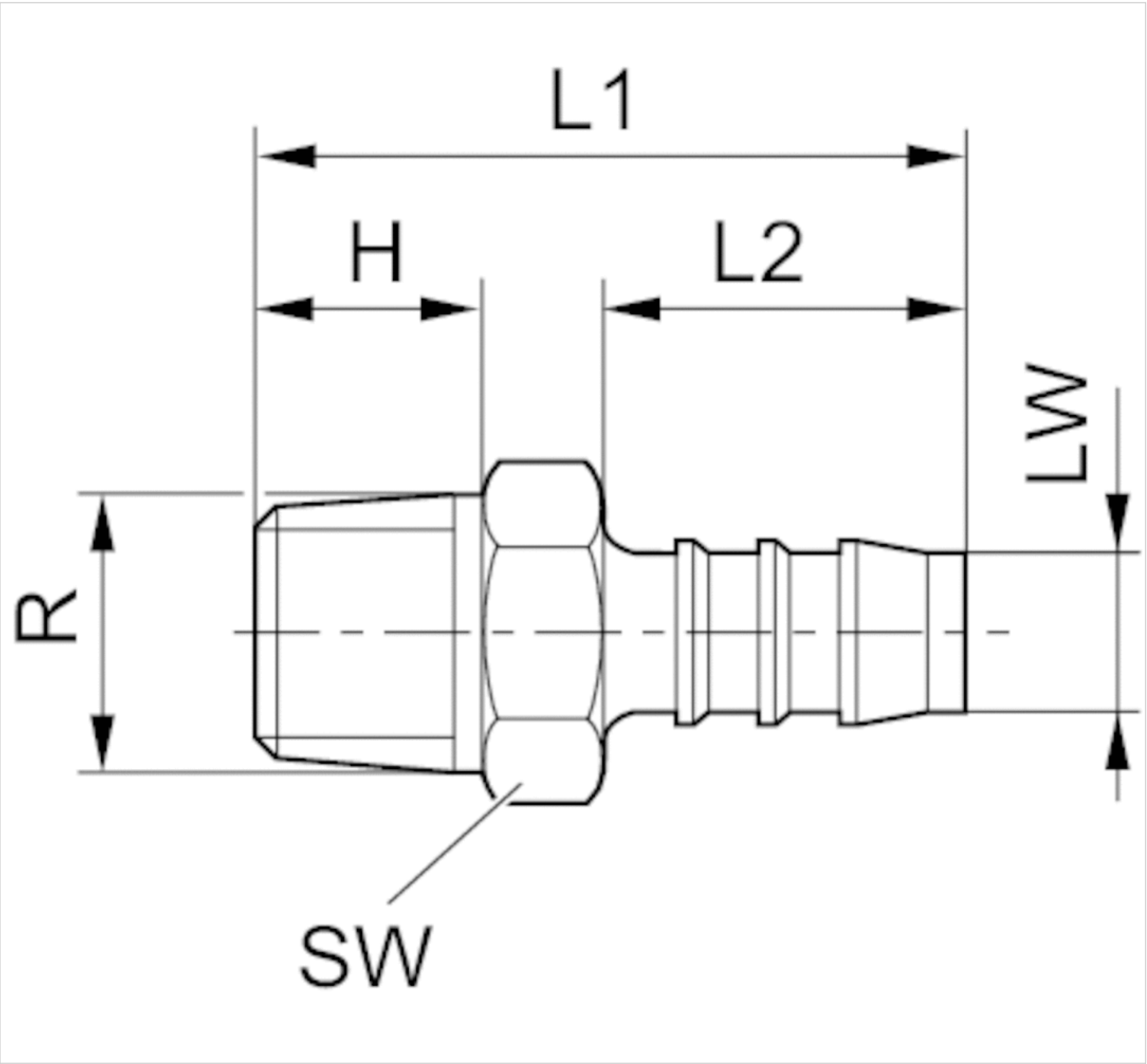
LW = inside diameter of the tubing to be used

## Technical information

Material	
Material	Polyamide



Dimensions



Dimensions

Part No.	Port R	LW	H	L1	L2	SW
1823386043	R 1/8	4 mm	8	27	15	10
1823386044	R 1/8	6 mm	8	33	20	10
1823386045	R 1/4	6 mm	12	38	20	14
8931290054	R 1/4	4 mm	12	39	23	14
1823386000	R 1/4	8 mm	12	41	23	14
1823386055	R 1/4	10 mm	12	43	25	14
1823386054	R 3/8	6 mm	12	39	20	17
1823386001	R 3/8	8 mm	12	44	23	17

UK Office  
5 Caulside Drive  
Antrim  
BT41 2DU  
United Kingdom  
+44 (0) 28 9448 1808

European Office  
Unit 6, Saint Anthony's Business Park  
Dublin  
D22 VW95  
Ireland  
+353 (0) 1 4373653

**AVENTICS**

Part No.	Port R	LW	H	L1	L2	SW
1823386056	R 3/8	10 mm	12	43	25	17
1823386003	R 3/8	12 mm	12	48	28	17
1823386002	R 1/2	8 mm	17	49	23	22
1823386004	R 1/2	13 mm	17	54	28	22

UK Office  
5 Caulside Drive  
Antrim  
BT41 2DU  
United Kingdom  
+44 (0) 28 9448 1808

European Office  
Unit 6, Saint Anthony's Business Park  
Dublin  
D22 VW95  
Ireland  
+353 (0) 1 4373653

## Efficient pneumatic solutions, our program: cylinders and drives, valves and valve systems, air supply management



Visit us: [Emerson.com/Aventics](https://www.emerson.com/aventics)

Your local contact: [Emerson.com/contactus](https://www.emerson.com/contactus)



Emerson.com



Facebook.com/EmersonAutomationSolutions



LinkedIn.com/company/Emerson-Automation-Solutions



Twitter.com/EMR\_Automation

An example configuration is depicted on the title page. The delivered product may thus vary from that in the illustration. Subject to change. This Document, as well as the data, specifications and other information set forth in it, are the exclusive property of AVENTICS GmbH. It may not be reproduced or given to third parties without its consent. Only use the AVENTICS products shown in industrial applications. Read the product documentation completely and carefully before using the product. Observe the applicable regulations and laws of the respective country. When integrating the product into applications, note the system manufacturer's specifications for safe use of the product. The data specified only serve to describe the product. No statements concerning a certain condition or suitability for a certain application can be derived from our information. The information given does not release the user from the obligation of own judgement and verification. It must be remembered that the products are subject to a natural process of wear and aging.

The Emerson logo is a trademark and service mark of Emerson Electric Co. Brand logotype are registered trademarks of one of the Emerson family of companies. All other marks are the property of their respective owners. © 2020 Emerson Electric Co. All rights reserved.  
2020-12



# CONSIDER IT SOLVED™