

# QR1-S standard series

- Blanking plug
- pin bushing
- Ø 12
- QR1-S-RBS



Working pressure min./max.	-0,95 ... 10 bar
Ambient temperature min./max.	0 ... 60 °C
Weight	See table

## Technical data

Part No.	Port G	Delivery unit	Weight
2123212000	Ø 12	20 piece	0,004 kg
2123208000	Ø 8	20 piece	0,001 kg
2123210000	Ø 10	20 piece	0,002 kg

## Technical information

The series QR1 (plastic) and QR2 (metal) can not be combined

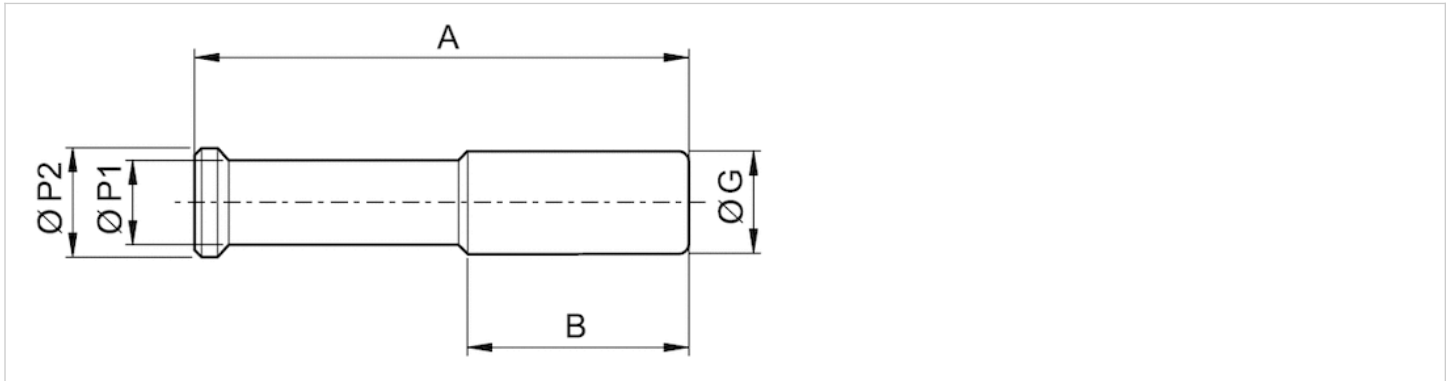
For further information about assembling and tolerances of adaptable tubing can be found in the "Technical information" document (available in the MediaCentre).

## Technical information

Material	
Material	nickel-plated
Housing	Polybutyleneterephthalate

## Dimensions

### Dimensions



## Dimensions

Part No.	Port G	A	B	Ø P1	Ø P2
2123212000	Ø 12	44	30	8	12
2123208000	Ø 8	39	25	5	9
2123210000	Ø 10	42	21	8	10