

# Base plate, ports 2 and 4 on bottom

- standard ISO 5599-1
- Frame size ISO 1
- type F
- Compressed air connection output G 1/4
- Can be assembled into blocks
- Single base plate principle
- Reversed pressure supply permissible
- With collective pilot air exhaust



Standards	ISO 5599-1
Compressed air connection	according to ISO 5599-1
Working pressure min./max.	-0,95 ... 16 bar
Ambient temperature min./max.	-25 ... 70 °C
Medium temperature min./max.	-25 ... 70 °C
Medium	Compressed air
Number of valve positions max.	1
Grid dimension	43 mm
Direction of pneumatic port (1)	On the side
Direction of pneumatic port (3,5)	On the side
Direction of pneumatic port (2,4)	Down
Direction of pneumatic port (12)	On the side
Direction of pneumatic port (14)	On the side
Exhaust (3,5)	With directional exhaust (3/5)
Exhaust type	Ports separated
Mounting screw	hexagon head
Weight	0,246 kg

## Technical data

Part No.	Compressed air connection Output [2 / 4]	Compressed air connection Pilot connection [X]
1825503144	G 1/4	G 1/8

Part No.	Compressed air connection Pilot control exhaust [R]
1825503144	G 1/8

Scope of delivery incl. seal and mounting screws

## Technical information

The min. control pressure must be adhered to, since otherwise faulty switching and valve failure may result!

The pressure dew point must be at least 15 °C under ambient and medium temperature and may not exceed 3 °C .

The oil content of compressed air must remain constant during the life cycle.

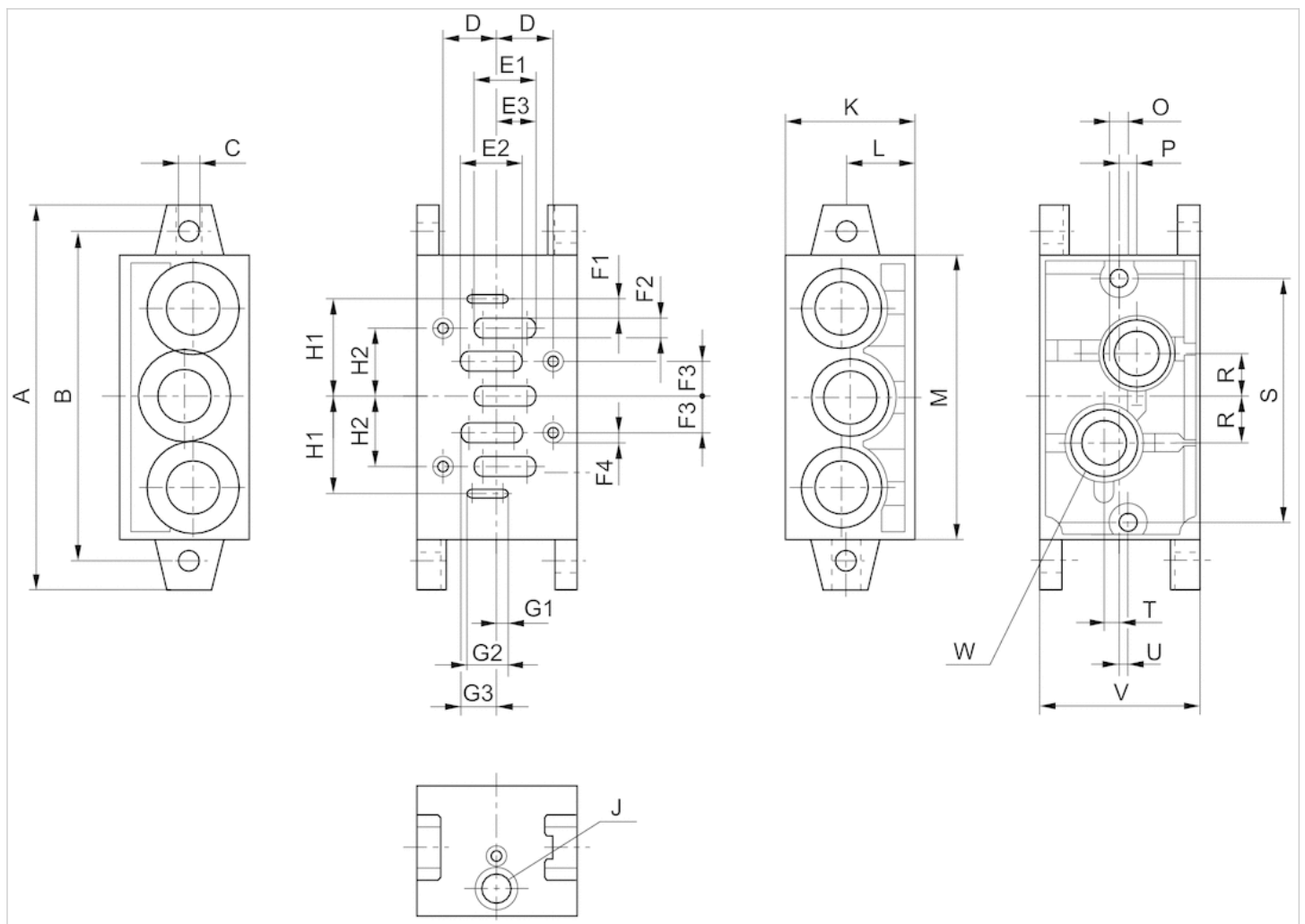
Use only the approved oils from AVENTICS. Further information can be found in the "Technical information" document (available in the MediaCentre).

## Technical information

Material	
Housing	Die-cast aluminum
Base plate	Die-cast aluminum
Seal	Acrylonitrile butadiene rubber

## Dimensions

### Dimensions



## Dimensions

Part No.	A	B	C	D	E1	E2	E3	F1	F2	F3	F4	G1	G2	G3	H1	H2	J	K	L	M	O
1825503144	110	95	5,5	14	16,5	16,5	11,25	3	4,5	9	M5	3	13,5	11,25	26,5	18	G 1/8	44	22	85	M5
P	R	S	T	U	V	W															
7,5	13	71	1,5	3	43	G 1/4															