

Pressure regulator


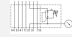
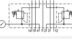


- Qn = 1700 l/min
- standard ISO 5599-1
- Frame size ISO 3
- Controlled port 1 2 2, 4 4



Working pressure min./max.	12 bar
Adjustment range min./max.	0,5 ... 8 bar
Ambient temperature min./max.	-15 ... 50 °C
Medium	Compressed air
Max. particle size	5 µm
Oil content of compressed air	0 ... 5 mg/m ³
Nominal flow Qn	1700 l/min
Tightening torque for mounting screws	6 Nm
Weight	See table below

The delivered product may vary from that in the illustration.

Technical data

Part No.		Frame size	Controlled port	Weight
R422103096		ISO 3	1	1,9 kg
R422103097		ISO 3	2	2,06 kg
R422103098		ISO 3	2, 4	2,8 kg
R422103167		ISO 3	1	1,9 kg
R422103168		ISO 3	4	2,06 kg

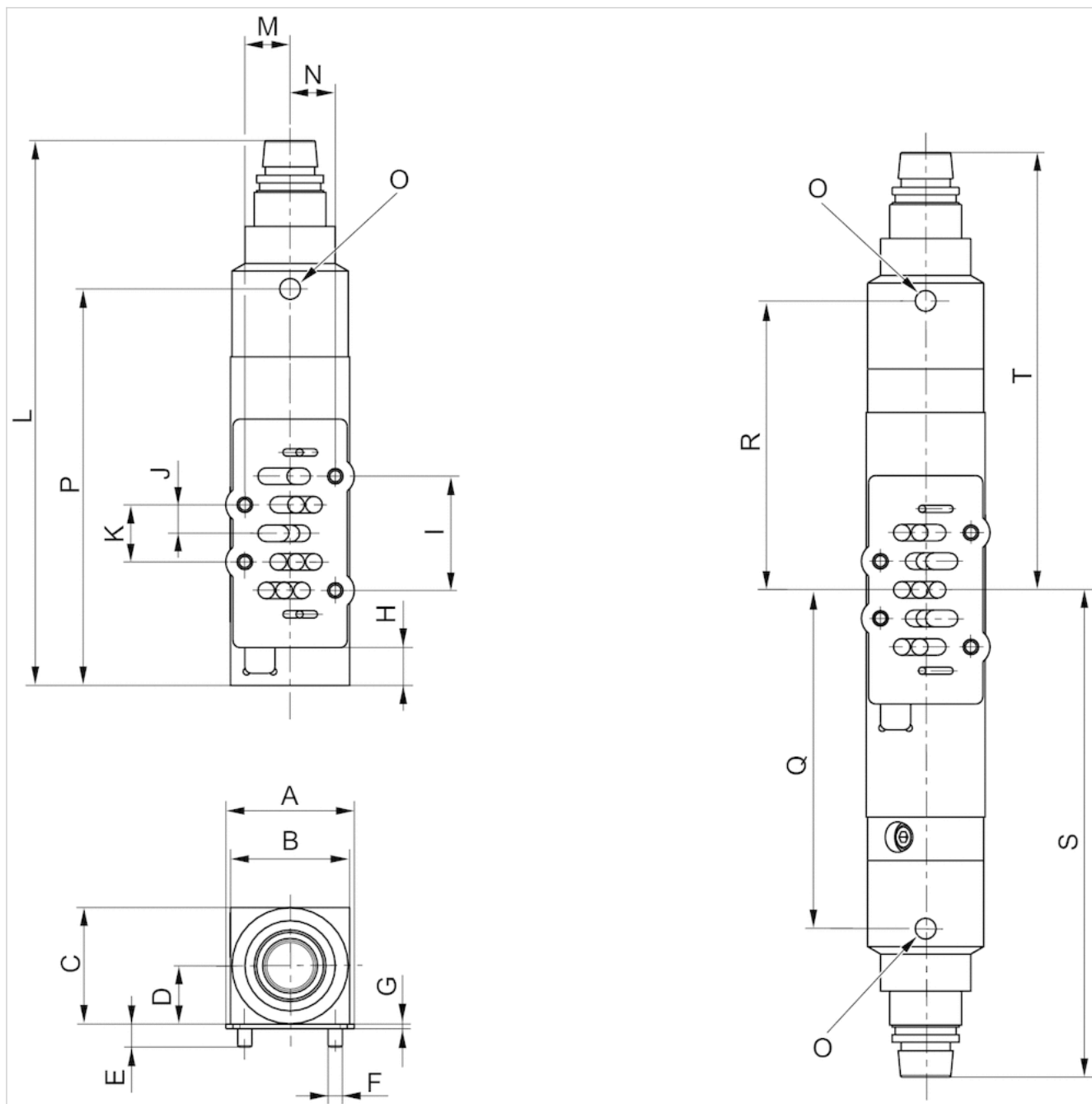
Scope of delivery incl. seal and mounting screws, Order pressure gauge separately, Nominal flow Qn at 6 bar and $\Delta p = 1$ bar .

Technical information

Material	
Housing	Aluminum
Seals	Butadiene rubber

Dimensions

Dimensions



Dimensions

Part No.	A	B	C	D	E	F	G	H	I	J	K	L	M	N	O	P	Q	R	S
R422103096	-	68	68	34	13.70	M8	2	19.20	64	16	32	288.80	24	24	G1/8	200.50	-	-	-
R422103097	-	68	68	34	13.70	M8	2	19.20	64	16	32	294.72	24	24	G1/8	206.46	-	-	-
R422103098	-	68	68	34	13.70	M8	2	19.20	64	16	32	-	24	24	G1/8	-	161.26	131.26	249.52
R422103167	-	68	68	34	13.70	M8	2	1.50	64	16	32	288.80	24	24	G1/8	-	-	-	-
R422103168	-	68	68	34	13.70	M8	2	1.50	64	16	32	307	24	24	G1/8	-	-	-	-

T

-

UK Office
5 Caulside Drive
Antrim
BT41 2DU
United Kingdom
+44 (0) 28 9448 1808

European Office
Unit 6, Saint Anthony's Business Park
Dublin
D22 VW95
Ireland
+353 (0) 1 4373653



	T
	-
	219.52
	-
	-