

# Single subbase, ports on side

- standard ISO 5599-1
- Frame size ISO 2
- Compressed air connection output G 1/4 G 3/8



Standards	ISO 5599-1
Working pressure min./max.	-1 ... 16 bar
Ambient temperature min./max.	-20 ... 70 °C
Medium temperature min./max.	-20 ... 70 °C
Medium	Compressed air
Number of valve positions max.	1
Direction of pneumatic port (1)	On the side
Direction of pneumatic port (3,5)	On the side
Direction of pneumatic port (2,4)	On the side
Direction of pneumatic port (14)	On the side
Exhaust (3,5)	With directional exhaust (3/5)
Exhaust type	Ports separated
Weight	See table below

## Technical data

Part No.	Compressed air connection Input [1]	Compressed air connection Output [2 / 4]
5802710000	G 1/4	G 1/4
5802740000	G 3/8	G 3/8

Part No.	Compressed air connection Exhaust [3 / 5]	Compressed air connection Pilot connection [X]	Weight
5802710000	G 1/4	G 1/8	0,19 kg
5802740000	G 3/8	G 1/8	0,32 kg

## Technical information

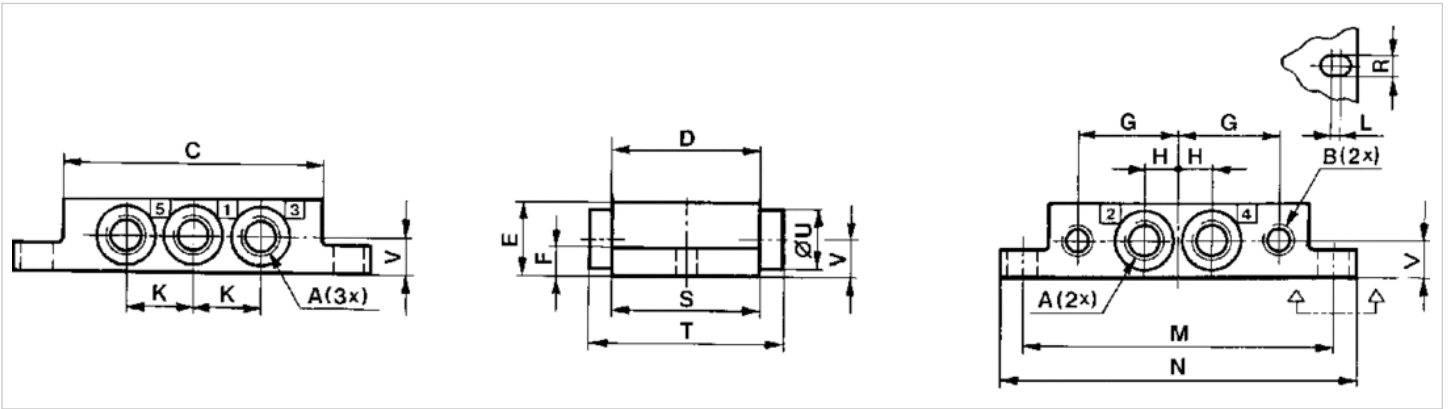
The min. control pressure must be adhered to, since otherwise faulty switching and valve failure may result!  
The pressure dew point must be at least 15 °C under ambient and medium temperature and may not exceed 3 °C .  
The oil content of compressed air must remain constant during the life cycle.  
Use only the approved oils from AVENTICS. Further information can be found in the "Technical information" document (available in the MediaCentre).

## Technical information

Material	
Base plate	Die-cast aluminum, black painted

## Dimensions

### Dimensions



## Dimensions

Part No.	Frame size	A *)	B *)	C	D	E	F	G	H	K	L	M	N	R	S	T	U	V
5802710000	ISO 2	G 1/4	G 1/8	86	52	23	8	34	12	24	2	102	115	6.4	52	-	-	11.5
5802740000	ISO 2	G 3/8	G 1/8	86	50	30	13	39	15	30	2	111	124	6.4	56	80	27	16

\*) Ports