

# Single subbase, thread connections on the side

- standard ISO 5599-1
- Frame size ISO 4
- Compressed air connection output G 3/4
- Reversed pressure supply permissible



Standards	ISO 5599-1
Compressed air connection	according to ISO 5599-1
Working pressure min./max.	-0,95 ... 10 bar
Ambient temperature min./max.	-25 ... 70 °C
Medium temperature min./max.	-25 ... 70 °C
Medium	Compressed air
Number of valve positions max.	1
Grid dimension	85 mm
Direction of pneumatic port (1)	On the side
Direction of pneumatic port (3,5)	On the side
Direction of pneumatic port (2,4)	On the side
Direction of pneumatic port (12)	On the side
Direction of pneumatic port (14)	On the side
Exhaust (3,5)	With directional exhaust (3/5)
Exhaust type	Ports separated
Weight	0,99 kg

## Technical data

Part No.	Compressed air connection Input [1]	Compressed air connection Output [2 / 4]
8985041404	G 3/4	G 3/4

Part No.	Compressed air connection Exhaust [3 / 5]	Compressed air connection Pilot connection [X]
8985041404	G 3/4	G 1/8

Part No.	Compressed air connection Pilot control exhaust [R]
8985041404	G 1/8

## Technical information

The min. control pressure must be adhered to, since otherwise faulty switching and valve failure may result!  
The pressure dew point must be at least 15 °C under ambient and medium temperature and may not exceed 3 °C .  
The oil content of compressed air must remain constant during the life cycle.  
Use only the approved oils from AVENTICS. Further information can be found in the "Technical information" document (available in the MediaCentre).

For use with HV series valves, the ambient temperature is - 25 °C ... 200 °C and the medium temperature is - 25 °C ... 120 °C .  
Reversed pressure supply is not permitted for HV series valves.

## Technical information

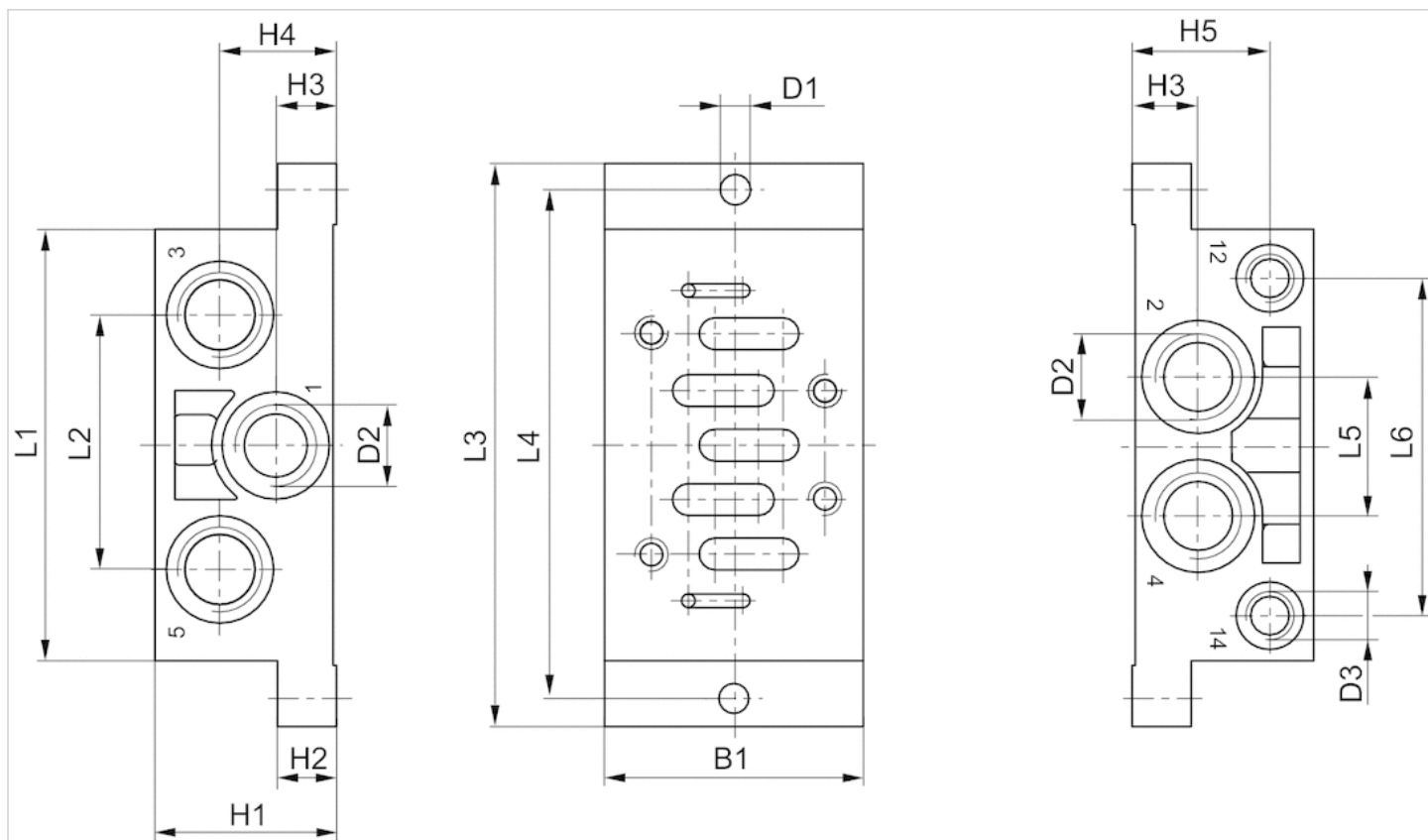
### Material

Base plate

Die-cast aluminum

## Dimensions

Fig. 1



## Dimensions

Part No.	Frame size	B1	H1	H2	H3	H4	H5	D1	D2 *)	D3 *)	L1	L2	L3	L4	L5	L6
8985041404	ISO 4	85	42	19	22	22	30	9	G 3/4	G 1/8	148	90	186	170	42	111

\*) Ports