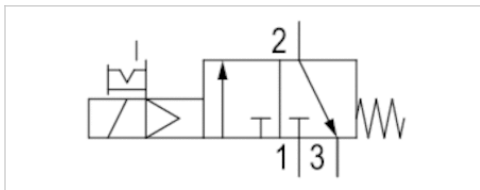


Pilot valve

- CNOMO / NFE 49-003-1



Standards	CNOMO / NFE 49-003-1
Working pressure min./max.	0 ... 10 bar
Ambient temperature min./max.	-10 ... 50 °C
Medium	Compressed air
Protection class with connection	IP65
Duty cycle	100 %
Weight	0,17 kg

Technical data

Part No.	MO	Operationalvoltage DC	Operationalvoltage AC 50 Hz	Voltage tolerance DC
5428110080		-	230 V	-
5420890020		24 V	-	-10% / +10%

Part No.	Voltage tolerance AC 50 Hz	Power consumption DC	Holding power AC 50 Hz	Switch-on power AC 50 Hz
5428110080	-20% / +10%	-	8 VA	10 VA
5420890020	-	2 W	-	-

Part No.	Power consumption
5428110080	-
5420890020	Low power consumption

MO = Manual override, pilot valve 30x22 mm with CNOMO porting configuration

Technical information

The min. control pressure must be adhered to, since otherwise faulty switching and valve failure may result!
 The pressure dew point must be at least 15 °C under ambient and medium temperature and may not exceed 3 °C .
 The oil content of compressed air must remain constant during the life cycle.
 Use only the approved oils from AVENTICS. Further information can be found in the "Technical information" document (available in the MediaCentre).

