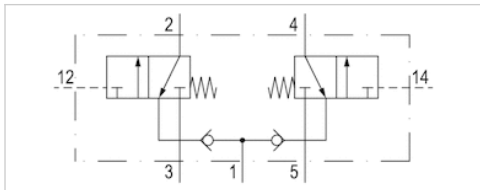


# 2x3/2-directional valve, Series 581, size 1

- Qn = 950 l/min
- Plate connection
- Compressed air connection output Base plate ISO 5599-1
- Can be assembled into blocks
- suitable for ATEX



Version	Spool valve
Blocking principle	Single base plate principle
Sealing principle	Soft sealing
ATEX class G	II 2G2D T4 X
Connection type	Plate connection
Standards	ISO 5599-1, ISO 1
Nominal flow Qn	950 l/min
Compressed air connection	Base plate ISO 5599-1
Working pressure min./max.	0 ... 8 bar
Control pressure min./max.	3,5 ... 8 bar
Ambient temperature min./max.	-20 ... 70 °C
Medium temperature min./max.	-20 ... 70 °C
Medium	Compressed air class 6-4-3
Max. particle size	50 µm
Oil content of compressed air	0 ... 5 mg/m <sup>3</sup>
Mounting screw	with hexagon socket
Mounting screw tightening torque	2 Nm
Weight	0,21 kg

## Technical data

Part No.	Flow conductance	ATEX
	C-value	
R402003708	4,2 l/(s*bar)	suitable for ATEX

Nominal flow Qn at 6 bar and  $\Delta p = 1$  bar

## Technical information

The min. control pressure must be adhered to, since otherwise faulty switching and valve failure may result!  
 The pressure dew point must be at least 15 °C under ambient and medium temperature and may not exceed 3 °C .  
 The oil content of compressed air must remain constant during the life cycle.  
 Use only the approved oils from AVENTICS. Further information can be found in the "Technical information" document (available in the MediaCentre).

## Technical information

Housing	Aluminum
Seals	Acrylonitrile butadiene rubber

## Dimensions

### Dimensions

