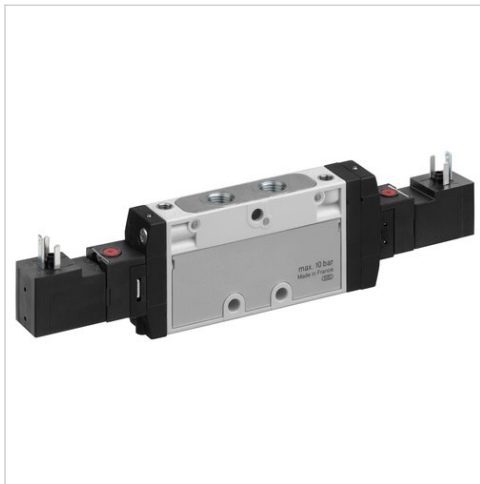


## 2x3/2-directional valve, Series TC08

- Operating voltage 24 V AC, 110 V AC, 230 V AC
- Qn = 600 l/min
- Pilot valve width : 15 mm
- Pipe connection
- Compressed air connection output : G 1/8
- Electrical connection : Plug, ISO 15217, form C
- Manual override : without detent
- Double solenoid
- With spring return
- Pilot : external, internal



Version	Spool valve, positive overlapping
Activation	Electrically
Pilot	external, internal
Sealing principle	Soft sealing
Working pressure min./max.	See table below
Control pressure min./max.	2,5 ... 10 bar
Ambient temperature min./max.	-10 ... 50 °C
Medium temperature min./max.	-10 ... 50 °C
Medium	Compressed air
Max. particle size	5 µm
Oil content of compressed air	0 ... 5 mg/m <sup>3</sup>
Nominal flow Qn	600 l/min
Compressed air connection	according to ISO 228-1
Connector standard	ISO 15217
Protection class with connection	IP65
Duty cycle	100 %
Typ. switch-on time	10 ms
Typ. switch-off time	14 ms
Mounting on manifold strip	P-strip
Mounting screw tightening torque	2 Nm
Tightening torque tolerance	±0,2 mT
Weight	0,181 kg

## Technical data

Part No.		NC/NC	MO	Compressed air connection	
				Input	
R422102022		NC/NC			G 1/8
R422102024		NC/NC			G 1/8
R422102025		NC/NC			G 1/8
R422102026		NO/NO			G 1/8
R422102028		NO/NO			G 1/8
R422102029		NO/NO			G 1/8
R422102030		NC/NO			G 1/8
R422102032		NC/NO			G 1/8
R422102033		NC/NO			G 1/8
R422102035		NC/NC			G 1/8
R422102036		NC/NC			G 1/8
R422102038		NO/NO			G 1/8
R422102039		NO/NO			G 1/8
R422102041		NC/NO			G 1/8
R422102042		NC/NO			G 1/8

Part No.	Compressed air connection	
	Output	Exhaust
R422102022	G 1/8	G 1/8
R422102024	G 1/8	G 1/8
R422102025	G 1/8	G 1/8
R422102026	G 1/8	G 1/8
R422102028	G 1/8	G 1/8
R422102029	G 1/8	G 1/8
R422102030	G 1/8	G 1/8
R422102032	G 1/8	G 1/8
R422102033	G 1/8	G 1/8
R422102035	G 1/8	G 1/8
R422102036	G 1/8	G 1/8
R422102038	G 1/8	G 1/8
R422102039	G 1/8	G 1/8
R422102041	G 1/8	G 1/8
R422102042	G 1/8	G 1/8

Part No.	Compressed air connection		Operationalvoltage	
	Pilot Input		AC 50 Hz	AC 60 Hz
R422102022	-		24 V	24 V
R422102024	-		110 V	110 V
R422102025	-		230 V	230 V
R422102026	-		24 V	24 V
R422102028	-		110 V	110 V
R422102029	-		230 V	230 V
R422102030	-		24 V	24 V
R422102032	-		110 V	110 V
R422102033	-		230 V	230 V
R422102035	M5		110 V	110 V

Part No.	Compressed air connection	Operationalvoltage	Operationalvoltage
	Pilot Input	AC 50 Hz	AC 60 Hz
R422102036	M5	230 V	230 V
R422102038	M5	110 V	110 V
R422102039	M5	230 V	230 V
R422102041	M5	110 V	110 V
R422102042	M5	230 V	230 V

Part No.	Voltage tolerance	Voltage tolerance	Holding power	Holding power
	AC 50 Hz	AC 60 Hz	AC 50 Hz	AC 60 Hz
R422102022	-10% / +10%	-10% / +10%	1,6 VA	1,4 VA
R422102024	-10% / +10%	-10% / +10%	1,6 VA	1,4 VA
R422102025	-10% / +10%	-10% / +10%	1,6 VA	1,4 VA
R422102026	-10% / +10%	-10% / +10%	1,6 VA	1,4 VA
R422102028	-10% / +10%	-10% / +10%	1,6 VA	1,4 VA
R422102029	-10% / +10%	-10% / +10%	1,6 VA	1,4 VA
R422102030	-10% / +10%	-10% / +10%	1,6 VA	1,4 VA
R422102032	-10% / +10%	-10% / +10%	1,6 VA	1,4 VA
R422102033	-10% / +10%	-10% / +10%	1,6 VA	1,4 VA
R422102035	-10% / +10%	-10% / +10%	1,6 VA	1,4 VA
R422102036	-10% / +10%	-10% / +10%	1,6 VA	1,4 VA
R422102038	-10% / +10%	-10% / +10%	1,6 VA	1,4 VA
R422102039	-10% / +10%	-10% / +10%	1,6 VA	1,4 VA
R422102041	-10% / +10%	-10% / +10%	1,6 VA	1,4 VA
R422102042	-10% / +10%	-10% / +10%	1,6 VA	1,4 VA

Part No.	Switch-on power	Switch-on power	Flow conductance	Flow conductance
	AC 50 Hz	AC 60 Hz	b	C-value
R422102022	2,2 VA	2 VA	0,27	2,8 l/(s*bar)
R422102024	2,2 VA	2 VA	0,27	2,8 l/(s*bar)
R422102025	2,2 VA	2 VA	0,27	2,8 l/(s*bar)
R422102026	2,2 VA	2 VA	0,27	2,8 l/(s*bar)
R422102028	2,2 VA	2 VA	0,27	2,8 l/(s*bar)
R422102029	2,2 VA	2 VA	0,27	2,8 l/(s*bar)
R422102030	2,2 VA	2 VA	0,27	2,8 l/(s*bar)
R422102032	2,2 VA	2 VA	0,27	2,8 l/(s*bar)
R422102033	2,2 VA	2 VA	0,27	2,8 l/(s*bar)
R422102035	2,2 VA	2 VA	0,27	2,8 l/(s*bar)
R422102036	2,2 VA	2 VA	0,27	2,8 l/(s*bar)
R422102038	2,2 VA	2 VA	0,27	2,8 l/(s*bar)
R422102039	2,2 VA	2 VA	0,27	2,8 l/(s*bar)
R422102041	2,2 VA	2 VA	0,27	2,8 l/(s*bar)
R422102042	2,2 VA	2 VA	0,27	2,8 l/(s*bar)

Nominal flow Qn at 6 bar and  $\Delta p = 1$  bar, MO = Manual override



## Technical information

The min. control pressure must be adhered to, since otherwise faulty switching and valve failure may result!  
 The pressure dew point must be at least 15 °C under ambient and medium temperature and may not exceed 3 °C .  
 The oil content of compressed air must remain constant during the life cycle.  
 Use only the approved oils from AVENTICS. Further information can be found in the “Technical information” document (available in the MediaCentre).

## Technical information

Material	
Housing	Polyamide, fiber-glass reinforced
Seals	Acrylonitrile butadiene rubber Polyurethane
Front plate	Polyamide, fiber-glass reinforced
Threaded bushing	Brass Die cast zinc, nickel-plated chrome-plated

# Dimensions

## Dimensions

