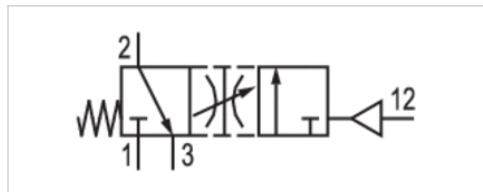


Soft-start valve

- Qn = 3300 l/min



Version	Spool valve
Standards	ISO 1
Nominal flow Qn	3300 l/min
Working pressure min./max.	3 ... 10 bar
Ambient temperature min./max.	-15 ... 50 °C
Medium temperature min./max.	-15 ... 50 °C
Medium	Compressed air class 6-4-3
Max. particle size	5 µm
Oil content of compressed air	0 ... 5 mg/m ³
Weight	0,39 kg

Technical data

Part No.	Flow conductance
	C-value
5832131000	11,3 l/(s*bar)

Technical information

The min. control pressure must be adhered to, since otherwise faulty switching and valve failure may result!

The pressure dew point must be at least 15 °C under ambient and medium temperature and may not exceed 3 °C .

The oil content of compressed air must remain constant during the life cycle.

Use only the approved oils from AVENTICS. Further information can be found in the "Technical information" document (available in the MediaCentre).

Technical information

Housing	Aluminum
Seals	Acrylonitrile butadiene rubber

Dimensions

Dimensions

