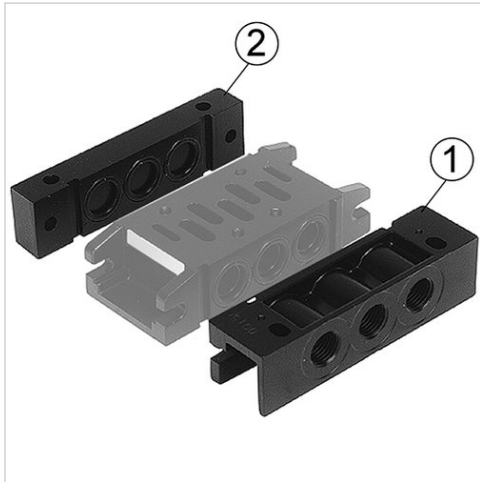


End plate left, End plate right

- standard ISO 5599-1
- Frame size ISO 2, ISO 3 ISO 3, ISO 4
- type K
- Can be assembled into blocks



Standards	ISO 5599-1
Working pressure min./max.	-1 ... 16 bar
Ambient temperature min./max.	-20 ... 70 °C
Medium temperature min./max.	-20 ... 70 °C
Medium	Compressed air
Exhaust (3,5)	uncollected exhaust
Exhaust type	Ports separated
Weight	See table below

Technical data

Part No.	Frame size	Compressed air connection		Weight
		Input [1]	Exhaust [3 / 5]	
5803850000	ISO 2, ISO 3	G 1/2	G 1/2	0,39 kg
5803860000	ISO 2, ISO 3	-	-	0,24 kg
5804850000	ISO 3, ISO 4	G 3/4	G 3/4	0,55 kg
5804860000	ISO 3, ISO 4	-	-	0,3 kg

Technical information

The min. control pressure must be adhered to, since otherwise faulty switching and valve failure may result!

The pressure dew point must be at least 15 °C under ambient and medium temperature and may not exceed 3 °C .

The oil content of compressed air must remain constant during the life cycle.

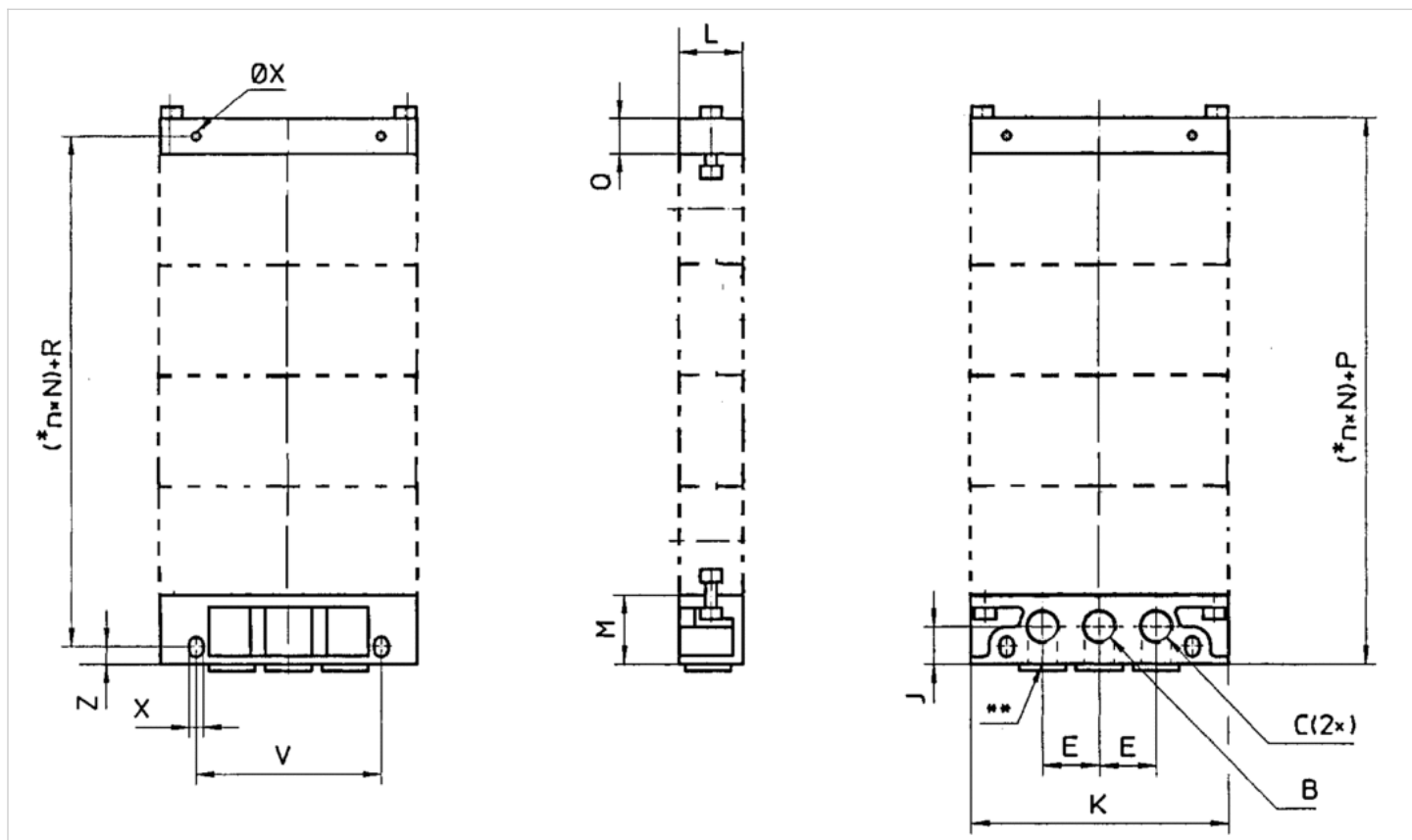
Use only the approved oils from AVENTICS. Further information can be found in the "Technical information" document (available in the MediaCentre).

Technical information

Material	
Surface	painted
Base plate	Die-cast aluminum, black painted
Seal	Acrylonitrile butadiene rubber

Dimensions

Dimensions



* n = Number of subbases. ** Alternative port openings, closed with plugs

Dimensions

Part No.		B	C	E	J	K	L	M	P	Q	R	V	X	Z	Weight
5803850000	ISO 2 , ISO 3	G 1/2	G 1/2	36	22	156	37	39	59	-	40	118	8.4	10	0,39 kg
5803860000	ISO 2 , ISO 3	-	-	-	-	156	37	-	59	20	40	118	8.4	-	0,24 kg
5804850000	ISO 3 , ISO 4	G 3/4	G 3/4	44	24	190	42	44	64	-	45	146	8.4	10	0,55 kg
5804860000	ISO 3 , ISO 4	-	-	-	-	190	42	-	64	20	45	146	8.4	-	0,3 kg