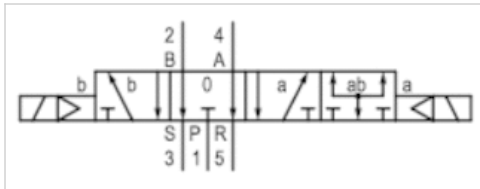


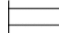
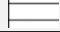
5/4-directional valve, Series 740-UL

- Qn = 700 l/min
- pressurized center
- Pipe connection
- Compressed air connection output : Ø3/8
- Electrical connection : Plug, EN 175301-803, form A
- Can be assembled into blocks
- Manual override : with detent, without detent
- Double solenoid
- Pilot : internal



Version	Diaphragm poppet valve
Activation	Electrically
Pilot	internal
Sealing principle	Soft sealing
Blocking principle	Plate principle Single base plate principle
Working pressure min./max.	1,5 ... 10 bar
Ambient temperature min./max.	-15 ... 50 °C
Medium temperature min./max.	-15 ... 50 °C
Medium	Compressed air
Max. particle size	50 µm
Oil content of compressed air	0 ... 5 mg/m ³
Nominal flow Qn	700 l/min
Connector standard	EN 175301-803:2006
Protection class with connection	IP65
Reverse polarity protection	Protected against polarity reversal
Compatibility index	14
Duty cycle	100 %
Typ. switch-on time	20 ms
Typ. switch-off time	54 ms
Mounting on manifold strip	PRS strip
Weight	0,497 kg

Technical data

Part No.	MO	Compressed air connection	
		Input	Output
R432038440		Ø3/8	Ø3/8
R432038422		Ø3/8	Ø3/8

Part No.	Compressed air connection		Operational voltage	
	Exhaust		DC	AC 50 Hz
R432038440	M14x1		24 V	-
R432038422	M14x1		-	110 V

Part No.	Operational voltage		Voltage tolerance	
	AC 60 Hz	DC	AC 50 Hz	AC 60 Hz
R432038440	-	-10% / +10%	-	-
R432038422	110 V	-	-10% / +10%	-10% / +10%

Part No.	Power consumption		Holding power		Switch-on power
	DC		AC 50 Hz	AC 60 Hz	AC 50 Hz
R432038440	2,7 W		-	-	-
R432038422	-		4,8 VA	3,6 VA	8 VA

Part No.	Switch-on power		Throttle	With valve plug connector
	AC 60 Hz			
R432038440	-		with throttle	Without valve plug connector
R432038422	6,5 VA		with throttle	Without valve plug connector

Nominal flow Q_n at 6 bar and $\Delta p = 1$ bar, MO = Manual override

Technical information

The min. control pressure must be adhered to, since otherwise faulty switching and valve failure may result!

The pressure dew point must be at least 15 °C under ambient and medium temperature and may not exceed 3 °C .

The oil content of compressed air must remain constant during the life cycle.

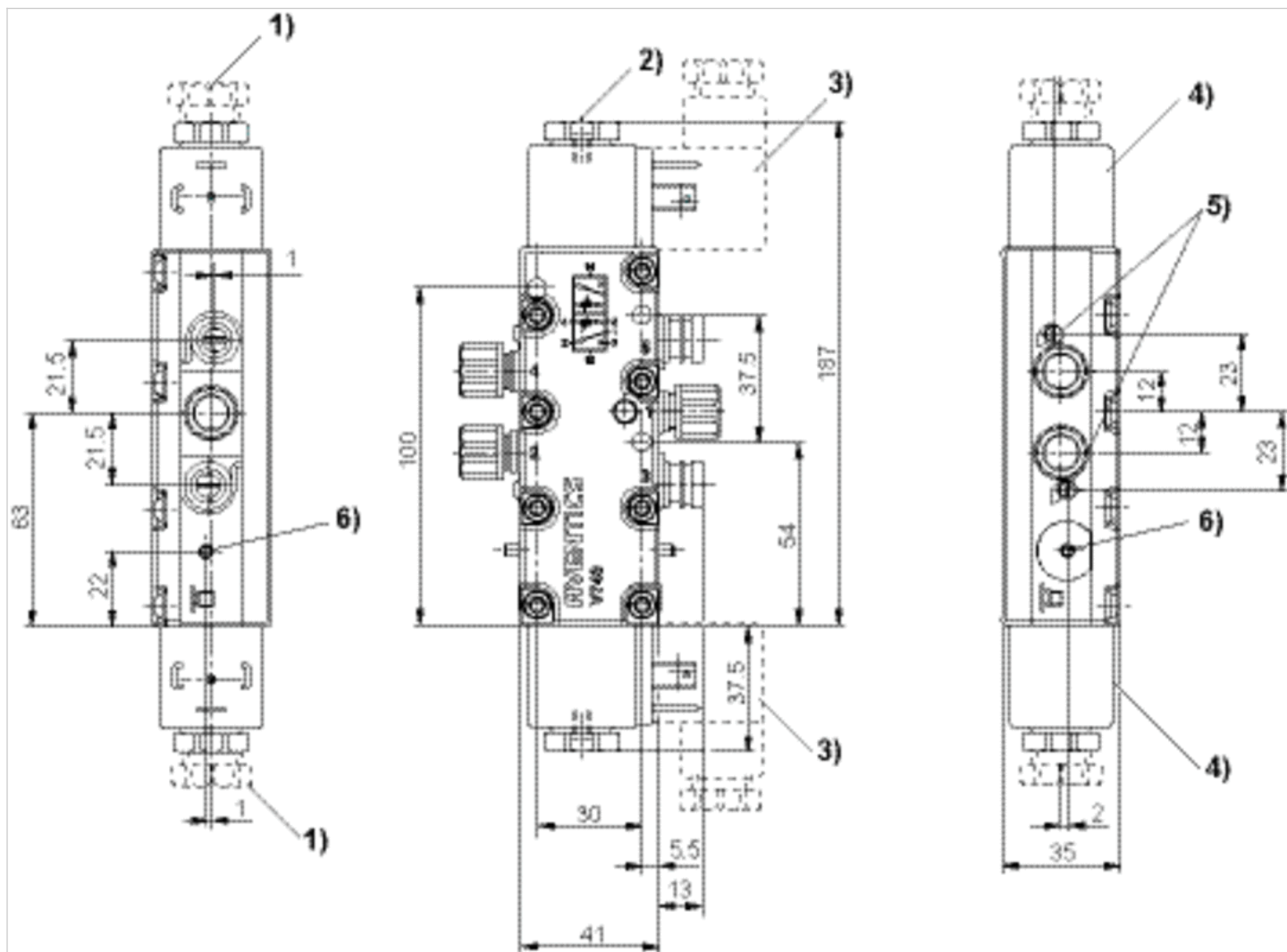
Use only the approved oils from AVENTICS. Further information can be found in the "Technical information" document (available in the MediaCentre).

Technical information

Material	
Housing	Polyoxymethylene
Seals	Acrylonitrile butadiene rubber

Dimensions

Dimensions



1) Gland fitting M16x1.52) M5 internal thread accessible under cap 3) Valve plug connector can be rotated at 90° intervals 4) Coil can be plugged at 45° intervals 5) Flow control screw for exhausts 5 (R) and 3 (S) 6) Manual override and position indicator