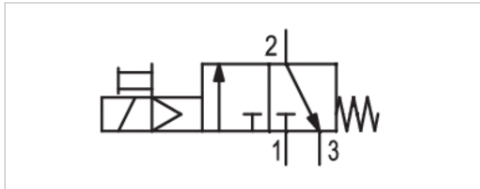


3/2-directional valve

- Manual override : without detent



Activation

Working pressure min./max.

Ambient temperature min./max.

Medium

Weight

Electrically

0 ... 16 bar

-10 ... 50 °C

Compressed air Compressed air

0,15 kg

Technical data

Part No.	Operationalvoltage	Operationalvoltage	Voltage tolerance	Voltage tolerance
	DC	AC 50 Hz	DC	AC 50 Hz
5420800390	24 V	42 V	-10% / +10%	-20% / +10%
5428200380	-	230 V	-	-20% / +10%
5428200370	-	110 V	-	-20% / +10%

Part No.	Power consumption	Holding power	Switch-on power
	DC	AC 50 Hz	AC 50 Hz
5420800390	6,7 W	-	-
5428200380	-	8 VA	10 VA
5428200370	-	8 VA	10 VA

Nominal flow Qn with secondary pressure 6 bar at $\Delta p = 1$ bar

Technical information

The min. control pressure must be adhered to, since otherwise faulty switching and valve failure may result!

The pressure dew point must be at least 15 °C under ambient and medium temperature and may not exceed 3 °C .

The oil content of compressed air must remain constant during the life cycle.

Use only the approved oils from AVENTICS. Further information can be found in the "Technical information" document (available in the MediaCentre).

Dimensions

Dimensions

