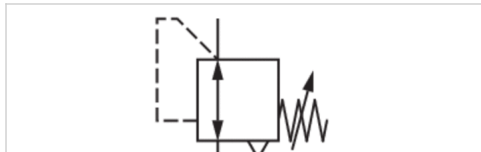


Pressure regulator, Series AS5-RGS






- G 3/4
- Qn = 14500 l/min
- Standard pressure regulator
- Activation Mechanical
- lockable
- for padlocks
- suitable for ATEX



| | |
|---------------------------------|---|
| Parts | Pressure regulator |
| Mounting orientation | Any |
| Certificates | suitable for ATEX |
| Working pressure min./max. | See table |
| Ambient temperature min./max. | -10 ... 50 °C |
| Medium temperature min./max. | -10 ... 50 °C |
| Medium | Compressed air Neutral gases |
| Regulator type | Diaphragm-type pressure regulator Can be assembled into blocks with relieving air exhaust |
| Regulator function | |
| Adjustment range min./max. | See table |
| Lock type | for padlocks |
| Pressure supply | single |
| Activation | Mechanical |
| Internal air consumption q max. | 1,5 l/min |
| Weight | See table |

Technical data

| Part No. | | | Port | Flow | Working pressure min./max. | Adjustment range min./max. |
|------------|--|---|-------|-------------|----------------------------|----------------------------|
| | | | | Qn | | |
| R412009101 | | | G 3/4 | 14500 l/min | 0,1 ... 16 bar | 0,1 ... 1 bar |
| R412009103 | | | G 3/4 | 14500 l/min | 0,1 ... 16 bar | 0,1 ... 2 bar |
| R412009105 | | | G 3/4 | 14500 l/min | 0,2 ... 16 bar | 0,2 ... 4 bar |
| R412009107 | | | G 3/4 | 14500 l/min | 0,5 ... 16 bar | 0,5 ... 8 bar |
| R412009109 | | | G 3/4 | 14500 l/min | 0,5 ... 16 bar | 0,5 ... 10 bar |
| R412009111 | | | G 3/4 | 14500 l/min | 0,5 ... 16 bar | 0,5 ... 16 bar |
| R412009100 | | — | G 3/4 | 14500 l/min | 0,1 ... 16 bar | 0,1 ... 1 bar |
| R412009102 | | — | G 3/4 | 14500 l/min | 0,1 ... 16 bar | 0,1 ... 2 bar |
| R412009104 | | — | G 3/4 | 14500 l/min | 0,2 ... 16 bar | 0,2 ... 4 bar |
| R412009106 | | — | G 3/4 | 14500 l/min | 0,5 ... 16 bar | 0,5 ... 8 bar |
| R412009108 | | — | G 3/4 | 14500 l/min | 0,5 ... 16 bar | 0,5 ... 10 bar |
| R412009110 | | — | G 3/4 | 14500 l/min | 0,5 ... 16 bar | 0,5 ... 16 bar |
| R412009113 | | | G 1 | 14500 l/min | 0,1 ... 16 bar | 0,1 ... 1 bar |
| R412009115 | | | G 1 | 14500 l/min | 0,1 ... 16 bar | 0,1 ... 2 bar |
| R412009117 | | | G 1 | 14500 l/min | 0,2 ... 16 bar | 0,2 ... 4 bar |
| R412009119 | | | G 1 | 14500 l/min | 0,5 ... 16 bar | 0,5 ... 8 bar |
| R412009121 | | | G 1 | 14500 l/min | 0,5 ... 16 bar | 0,5 ... 10 bar |
| R412009123 | | | G 1 | 14500 l/min | 0,5 ... 16 bar | 0,5 ... 16 bar |
| R412009112 | | — | G 1 | 14500 l/min | 0,1 ... 16 bar | 0,1 ... 1 bar |

| Part No. | | | Port | Flow | Working pressure min./max. | Adjustment range min./max. |
|------------|---|---|------|-------------|----------------------------|----------------------------|
| | | | | Qn | | |
| R412009114 |  | — | G 1 | 14500 l/min | 0,1 ... 16 bar | 0,1 ... 2 bar |
| R412009116 |  | — | G 1 | 14500 l/min | 0,2 ... 16 bar | 0,2 ... 4 bar |
| R412009118 |  | — | G 1 | 14500 l/min | 0,5 ... 16 bar | 0,5 ... 8 bar |
| R412009120 |  | — | G 1 | 14500 l/min | 0,5 ... 16 bar | 0,5 ... 10 bar |
| R412009122 |  | — | G 1 | 14500 l/min | 0,5 ... 16 bar | 0,5 ... 16 bar |

| Part No. | Weight | |
|------------|----------|----|
| R412009101 | 0,997 kg | 1) |
| R412009103 | 0,997 kg | 1) |
| R412009105 | 0,997 kg | 1) |
| R412009107 | 0,997 kg | 1) |
| R412009109 | 0,997 kg | 1) |
| R412009111 | 0,997 kg | 1) |
| R412009100 | 0,905 kg | 2) |
| R412009102 | 0,905 kg | 2) |
| R412009104 | 0,905 kg | 2) |
| R412009106 | 0,905 kg | 2) |
| R412009108 | 0,905 kg | 2) |
| R412009110 | 0,905 kg | 2) |
| R412009113 | 0,997 kg | 1) |
| R412009115 | 0,997 kg | 1) |
| R412009117 | 0,997 kg | 1) |
| R412009119 | 0,997 kg | 1) |
| R412009121 | 0,997 kg | 1) |
| R412009123 | 0,997 kg | 1) |
| R412009112 | 0,905 kg | 2) |
| R412009114 | 0,905 kg | 2) |
| R412009116 | 0,905 kg | 2) |
| R412009118 | 0,905 kg | 2) |
| R412009120 | 0,905 kg | 2) |
| R412009122 | 0,905 kg | 2) |

Technical information

2) Order pressure gauge separately. Suitable for use in Ex zones 1, 2, 21, 22

The pressure dew point must be at least 15 °C under ambient and medium temperature and may not exceed 3 °C .

The rear pressure gauge connection on the pressure regulator is closed with a blanking plug, the front connection is open. Depending on the customer application, a second blanking plug may be necessary. Please order separately (see accessories).

Suitable for use in Ex zones 1, 2, 21, 22

A change in the flow direction (from air supply on the left to air supply on the right) occurs by rotating installation by 180° about the vertical axis. Please see the operating instructions for further details.

Relieving exhaust (≤ 0.3 bar over set pressure)

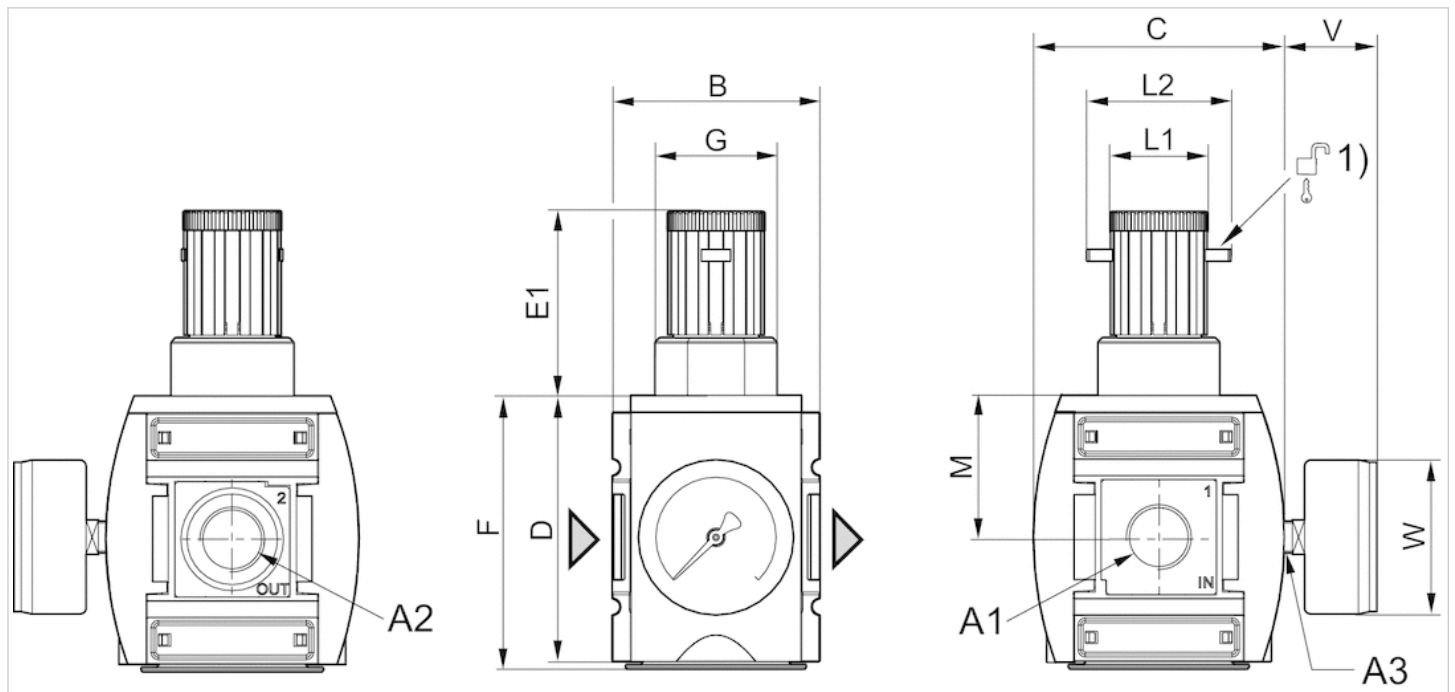
With rear exhaust (> 3 bar)

Technical information

| Material | |
|------------------|---------------------------------|
| Housing | Polyamide |
| Front plate | Acrylonitrile butadiene styrene |
| Seals | Acrylonitrile butadiene rubber |
| Threaded bushing | Die cast zinc |

Dimensions

Dimensions



A1 = input A2 = output A3 = pressure gauge connection

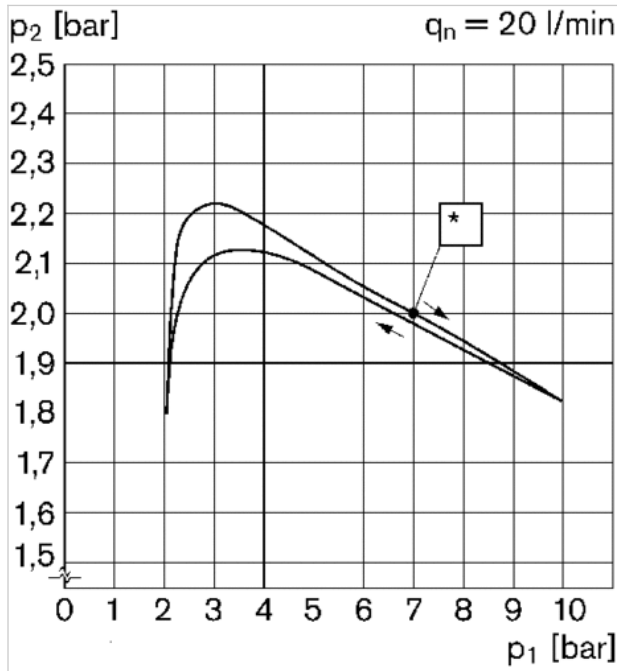
1) Mounting option for padlocks; max. shackle Ø 8

Dimensions in mm

| A1 | A2 | A3 | B | C | D | E1 | F | G | L1 | L2 | M | V | W |
|-------|-------|-------|----|-----|-----|----|-----|---------|----|----|----|----|----|
| G 3/4 | G 3/4 | G 1/4 | 85 | 103 | 109 | 75 | 112 | M50x1,5 | 41 | 60 | 58 | 38 | 63 |
| G 3/4 | G 3/4 | G 1/4 | 85 | 103 | 109 | 75 | 112 | M50x1,5 | 41 | 60 | 58 | 38 | 63 |
| G 3/4 | G 3/4 | G 1/4 | 85 | 103 | 109 | 75 | 112 | M50x1,5 | 41 | 60 | 58 | 38 | 63 |
| G 1 | G 1 | G 1/4 | 85 | 103 | 109 | 75 | 112 | M50x1,5 | 41 | 60 | 58 | 38 | 63 |

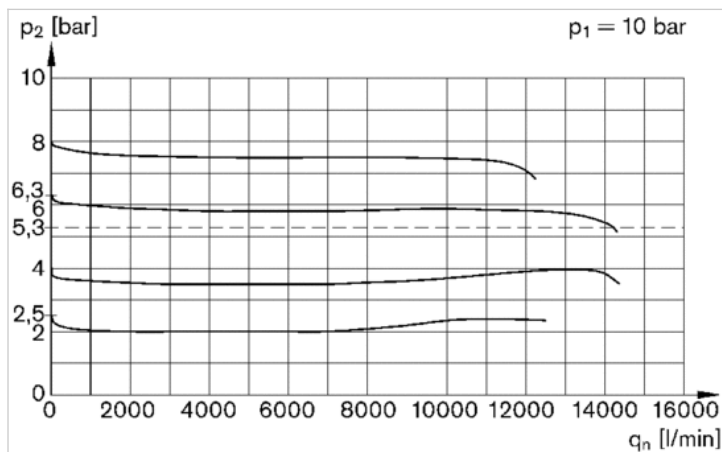
Diagrams

Pressure characteristics curve



p_1 = working pressure
 p_2 = secondary pressure
 q_n = nominal flow
 * starting point

Flow rate characteristic (setting range p_2 : 0.5 - 8 bar)



p_1 = working pressure
 p_2 = secondary pressure
 q_n = nominal flow