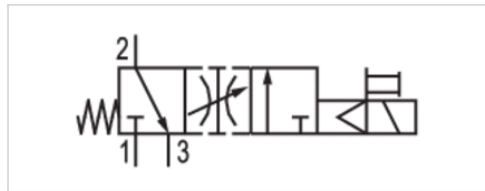


Soft-start valve

- Qn = 3300 l/min

- Manual override without detent



Version	Spool valve
Working pressure min./max.	3 ... 10 bar
Ambient temperature min./max.	-15 ... 50 °C
Medium temperature min./max.	-15 ... 50 °C
Medium	Compressed air
Max. particle size	5 µm
Oil content of compressed air	0 ... 1 mg/m ³
Nominal flow Qn	3300 l/min
Flow conductance C	11,3 l/(s*bar)
Protection class with connection	IP65
Duty cycle	100 %
Typ. switch-off time	60 ms
Weight	0,39 kg

Technical data

Part No.	MO	Operationalvoltage DC	Operationalvoltage AC 50 Hz	Operationalvoltage AC 60 Hz
5835901200		-	24 V	-
5835900100		24 V	-	-
5835901100		24 V	-	-
5835902100		24 V	-	-
5835901300		-	-	110 V
5835901400		-	230 V	-

Part No.	Voltage tolerance DC	Voltage tolerance AC 50 Hz	Voltage tolerance AC 60 Hz	Power consumption DC
5835901200	-	-10% / +10%	-	-
5835900100	-10% / +10%	-	-	2 W
5835901100	-10% / +10%	-	-	2 W
5835902100	-10% / +10%	-	-	2 W
5835901300	-	-	-10% / +10%	-
5835901400	-	-10% / +10%	-	-

Part No.	Holding power AC 50 Hz	Holding power AC 60 Hz	Switch-on power AC 50 Hz	Switch-on power AC 60 Hz	
5835901200	8 VA	-	10 VA	-	1)
5835900100	-	-	-	-	1)
5835901100	-	-	-	-	2)
5835902100	-	-	-	-	3)

Part No.	Holding power AC 50 Hz	Holding power AC 60 Hz	Switch-on power AC 50 Hz	Switch-on power AC 60 Hz	
5835901300	-	8 VA	-	10 VA	2)
5835901400	8 VA	-	10 VA	-	2)

MO = Manual override

- 1) with encapsulated cable
- 2) pin spacing 9.4 mm
- 3) Valve plug connector form C, ISO 15217, pin spacing 8 mm

Technical information

The min. control pressure must be adhered to, since otherwise faulty switching and valve failure may result!

The pressure dew point must be at least 15 °C under ambient and medium temperature and may not exceed 3 °C .

The oil content of compressed air must remain constant during the life cycle.

Use only the approved oils from AVENTICS. Further information can be found in the "Technical information" document (available in the MediaCentre).

Technical information

Housing	Aluminum
Seals	Acrylonitrile butadiene rubber

Dimensions

Dimensions

