

# QR1-S standard series

- Swivel banjo connection 1-fold
- External thread
- M5 G 1/8 G 1/4 G 3/8
- push-in fitting
- Ø 4 Ø 6 Ø 8 Ø 10 Ø 12
- QR1-S-RW1



Working pressure min./max.

-0,95 ... 10 bar

Ambient temperature min./max.

0 ... 60 °C

Weight

See table below

## Technical data

Part No.	Port G	Port D	Delivery unit	Weight
R412005236	M5	Ø 4	10 piece	0,007 kg
R412005238	M5	Ø 6	10 piece	0,008 kg
R412005237	G 1/8	Ø 4	10 piece	0,015 kg
R412005239	G 1/8	Ø 6	10 piece	0,016 kg
R412005240	G 1/8	Ø 8	10 piece	0,016 kg
R412005241	G 1/4	Ø 6	10 piece	0,028 kg
R412005242	G 1/4	Ø 8	10 piece	0,03 kg
R412005243	G 1/4	Ø 10	10 piece	0,032 kg
R412005244	G 3/8	Ø 8	5 piece	0,053 kg
R412005245	G 3/8	Ø 10	5 piece	0,055 kg
R412005246	G 3/8	Ø 12	5 piece	0,058 kg

Weight per piece

## Technical information

The series QR1 (plastic) and QR2 (metal) can not be combined  
Thread seal with captive O-ring

For further information about assembling and tolerances of adaptable tubing can be found in the "Technical information" document (available in the MediaCentre).

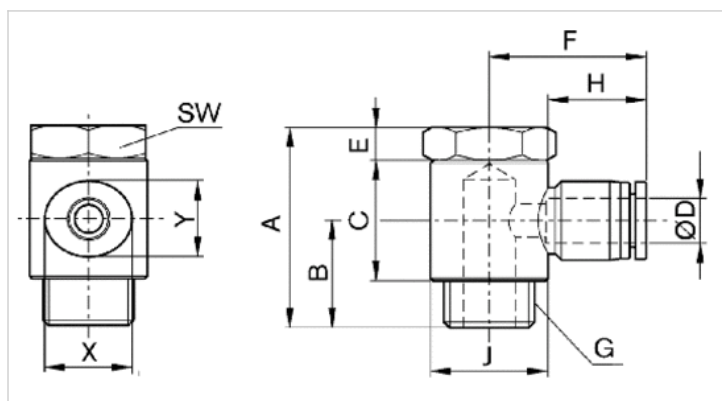
## Technical information

### Material

Material	nickel-plated
Housing	Polybutyleneterephthalate
Seal	Acrylonitrile butadiene rubber
Tooth lock washer	Stainless steel
Release ring	Polyoxymethylene
Release ring holder	Die cast zinc Brass, nickel-plated
Thread	Brass, nickel-plated

## Dimensions

### Dimensions



## Dimensions

Part No.	Port D	Port G	A	B	C	E	F	H	Ø J	SW	X	Y
R412005236	Ø 4	M5	17	11	9	3	20.7	16	10	8	12	10
R412005238	Ø 6	M5	17	11	9	3	23.2	17	10	8	14	12
R412005237	Ø 4	G 1/8	26.5	14	17	4	23.3	16	15	14	12	10
R412005239	Ø 6	G 1/8	26.5	14	17	4	24.8	17	15	14	14	12
R412005240	Ø 8	G 1/8	26.5	14	17	4	26.3	18.5	15	14	16	14
R412005241	Ø 6	G 1/4	32	17.5	19	5	25.9	17	18	17	14	12
R412005242	Ø 8	G 1/4	32	17.5	19	5	26.3	18.5	18	17	16	14
R412005243	Ø 10	G 1/4	32	17.5	19	5	29.8	21	17	17	19	17
R412005244	Ø 8	G 3/8	36.5	19.5	22	6	26.3	18.5	21.5	21	16	14
R412005245	Ø 10	G 3/8	36.5	19.5	22	6	29.8	21	21.5	21	19	17
R412005246	Ø 12	G 3/8	36.5	19.5	22	6	33.3	22.5	21.5	21	23	21