

# QR1-S standard series

- 1x banjo union
- Uncollected
- G 1/8 G 1/4
- push-in fitting
- Ø 4 Ø 6 Ø 8 Ø 10
- QR1-S-RV1



Working pressure min./max.

-0,95 ... 10 bar

Ambient temperature min./max.

0 ... 60 °C

Weight

See table below

## Technical data

Part No.	Port G	Port D	Delivery unit	Weight
R412000617	G 1/8	Ø 4	10 piece	0,002 kg
R412000623	G 1/8	Ø 6	10 piece	0,003 kg
R412000618	G 1/8	Ø 8	10 piece	0,004 kg
R412000624	G 1/4	Ø 6	10 piece	0,004 kg
R412000619	G 1/4	Ø 8	10 piece	0,004 kg
R412005303	G 1/4	Ø 10	10 piece	0,007 kg

Weight per piece

## Technical information

The series QR1 (plastic) and QR2 (metal) can not be combined

For further information about assembling and tolerances of adaptable tubing can be found in the "Technical information" document (available in the MediaCentre).

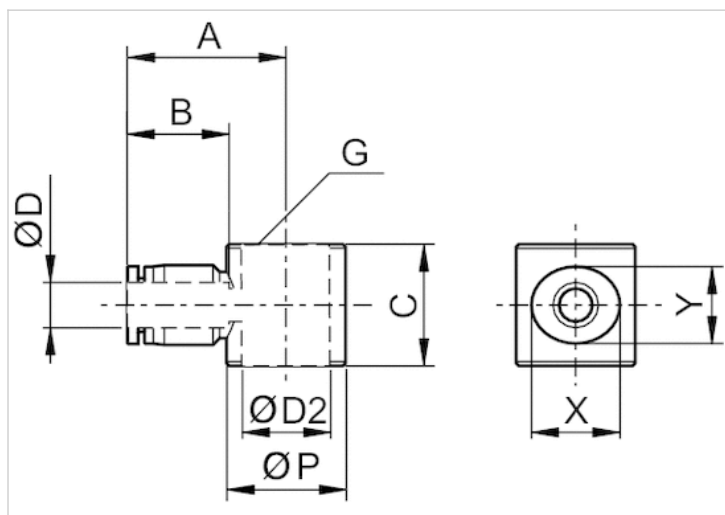
## Technical information

Material	
Material	nickel-plated
Housing	Polybutyleneterephthalate
Seal	Acrylonitrile butadiene rubber
Tooth lock washer	Stainless steel

Material	
Release ring	Polyoxymethylene
Release ring holder	Die cast zinc Brass, nickel-plated

## Dimensions

### Dimensions



### Dimensions

Part No.	Port D	Port G	Ø D2	A	B	C	Ø P	X	Y
R412000617	Ø 4	G 1/8	9.8	19	16	17	15	12	10
R412000623	Ø 6	G 1/8	9.8	24.8	17	17	15	14	12
R412000618	Ø 8	G 1/8	9.8	21.6	18.5	19	15	16	14
R412000624	Ø 6	G 1/4	13.2	20.9	17	17	18	14	12
R412000619	Ø 8	G 1/4	13.2	21.6	18.5	19	18	16	14
R412005303	Ø 10	G 1/4	13.2	24	21	22	18	19	17