

QR1-S standard series

- T-Banjo connection
- External thread
- G 1/8 G 1/4
- push-in fitting
- Ø 6 Ø 8
- QR1-S-RTS



Working pressure min./max.

-0,95 ... 10 bar

Ambient temperature min./max.

0 ... 60 °C

Weight

See table below

Technical data

Part No.	Port G	Port D	Delivery unit	Weight
R412005292	G 1/8	Ø 6	10 piece	0,03 kg
R412005293	G 1/8	Ø 8	10 piece	0,042 kg
R412005294	G 1/4	Ø 6	10 piece	0,031 kg
R412005295	G 1/4	Ø 8	10 piece	0,046 kg

Weight per piece

Technical information

The series QR1 (plastic) and QR2 (metal) can not be combined
Thread seal with captive O-ring

For further information about assembling and tolerances of adaptable tubing can be found in the "Technical information" document (available in the MediaCentre).

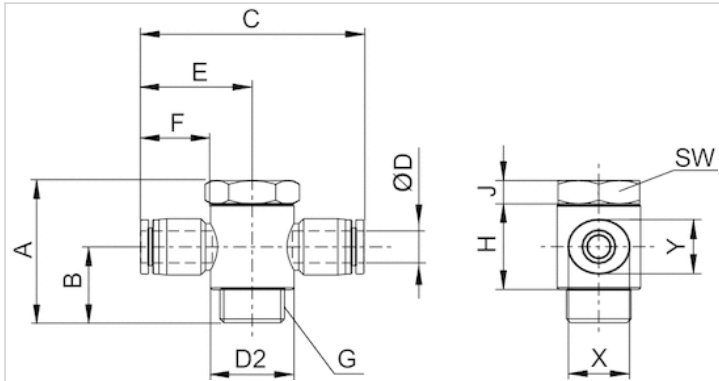
Technical information

Material	
Material	nickel-plated
Housing	Polybutyleneterephthalate
Seal	Acrylonitrile butadiene rubber
Tooth lock washer	Stainless steel
Release ring	Polyoxymethylene

Material	
Release ring holder	Die cast zinc Brass, nickel-plated
Thread	Brass, nickel-plated

Dimensions

Dimensions



Dimensions

Part No.	Port D	Port G	Ø D2	A	B	C	E	F	H	J	SW	X	Y
R412005292	Ø 6	G 1/8	15	26.5	14	49.6	24.8	17	17	4	14	14	12
R412005293	Ø 8	G 1/8	15	26.5	14	52.6	26.3	18.5	17	4	14	16	14
R412005294	Ø 6	G 1/4	18	32	17.5	51.8	25.9	17	19	5	17	14	12
R412005295	Ø 8	G 1/4	18	32	17.5	52.6	26.3	18.5	19	5	17	16	14